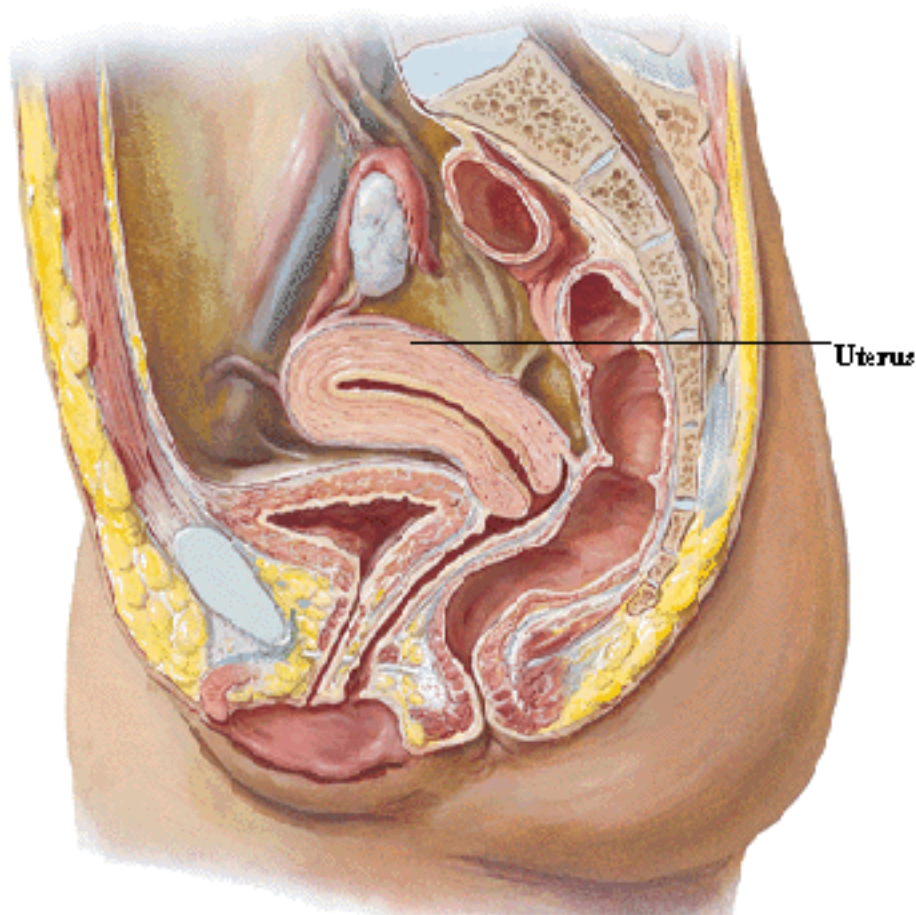
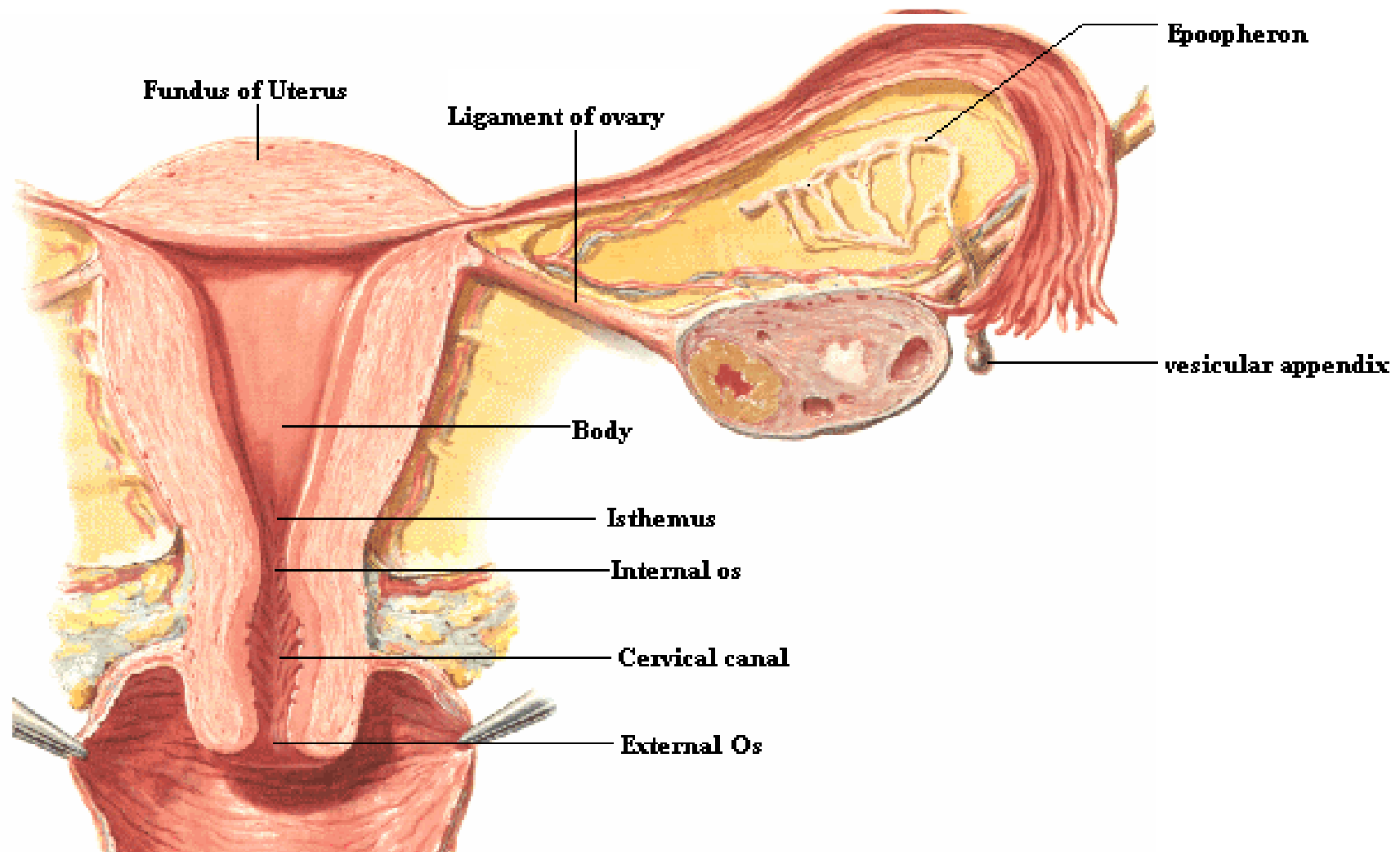


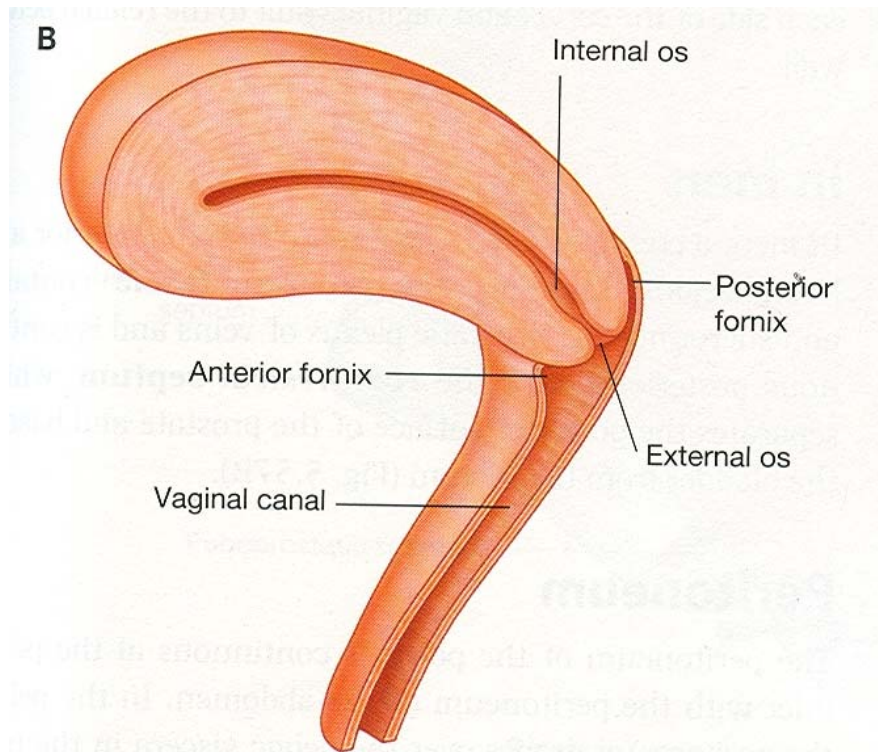
UTERUS



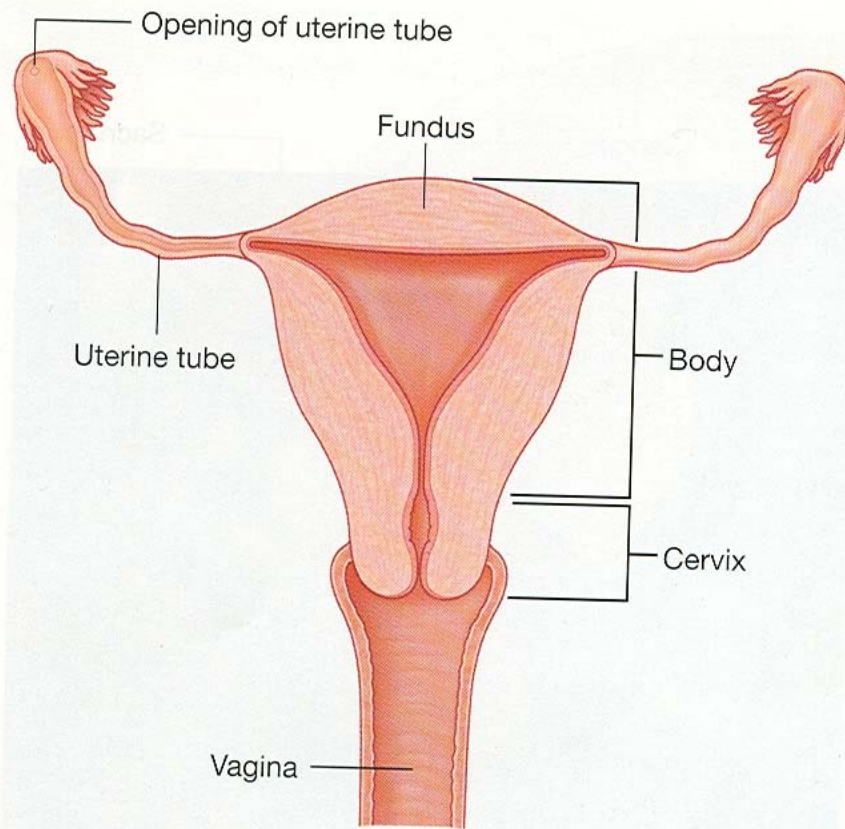
- Hollow
- Thick walled
- Muscular
- Organ for child bearing
- Body - 2/3
Cervix – 1/3

GENERAL FEATURES





- Located in lesser pelvis
- Pear shaped
- 7-8cm long
- 5cm wide
- 2-3 cm thick



Lumen flat anteropost.

Cavity- 6 cm.

Cervix narrow & cylindrical

2.5 cm long

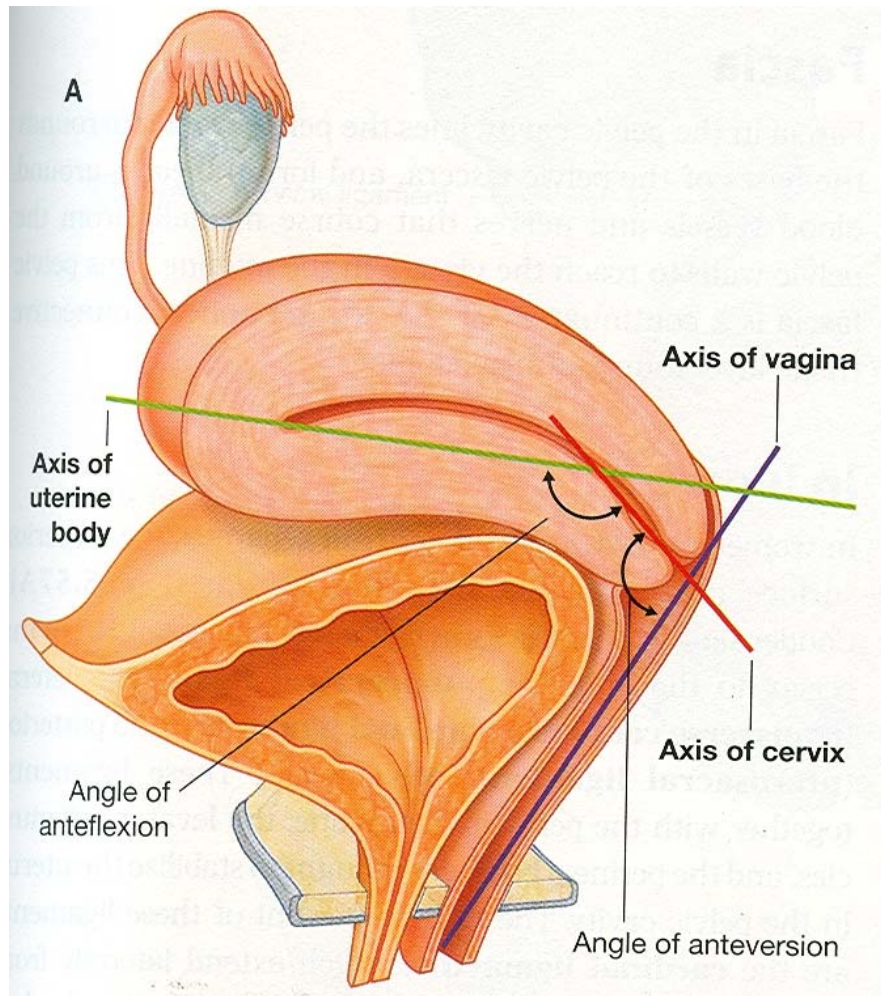
External os

Isthmus- upper 1/3 (lower uterine segment)

Supravaginal

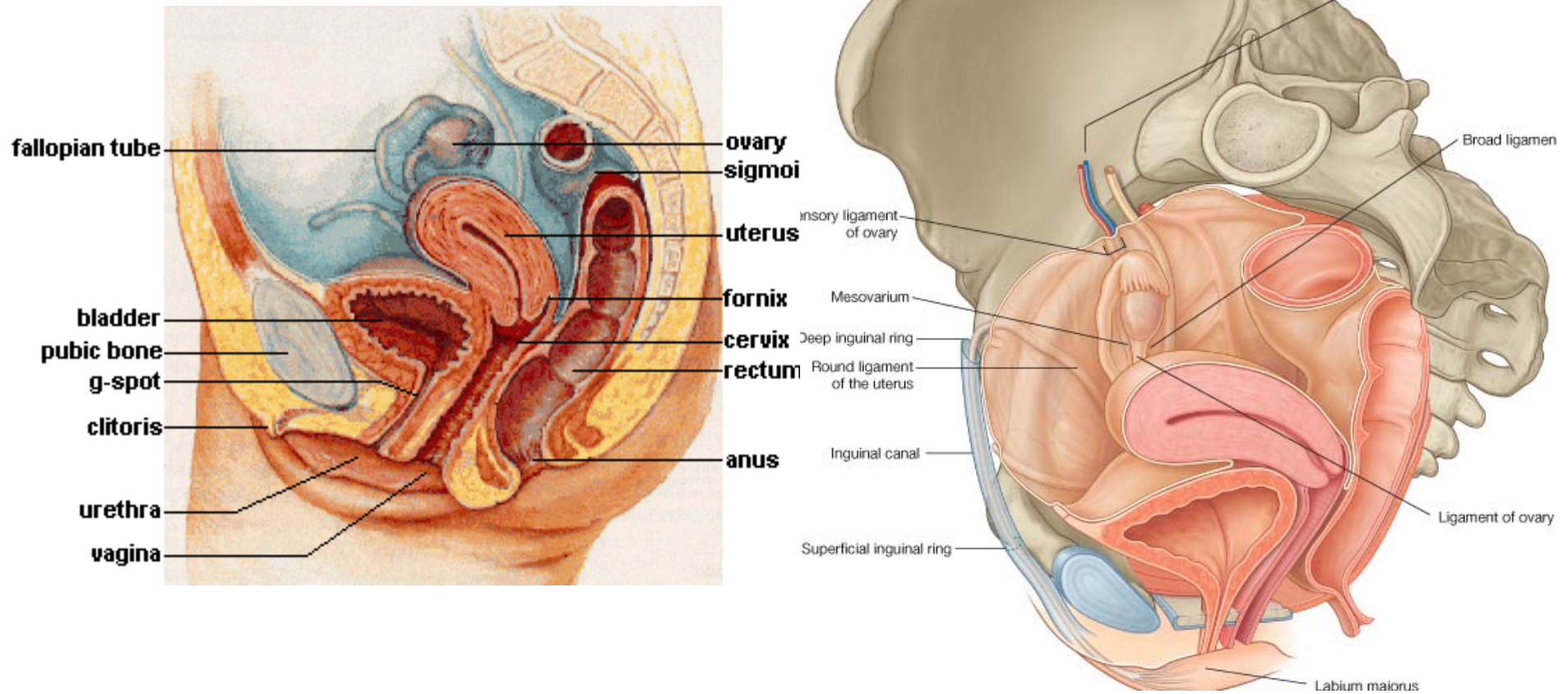
Vaginal: fornices

Position of Uterus



- Anteverted
- Anteflexed

PERITONEAL RELATIONS

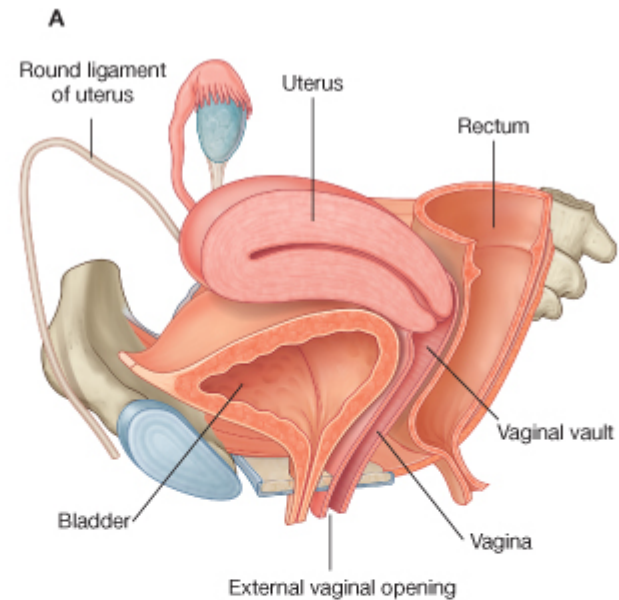


VISCERAL RELATIONS

Ant.-Sup. Surface of bladder

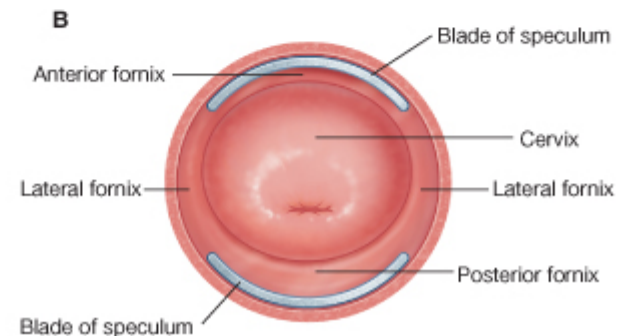
Post.-ant. Surface of rectum, loops of intestine

Lat.- ureter, uterine artery, transverse cardinal ligament



© Elsevier. Drake et al: Gray's Anatomy for Students - www.studentconsult.com

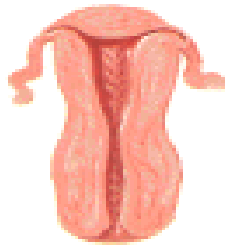
[Add to My Slides](#) [Go to My Slides](#)



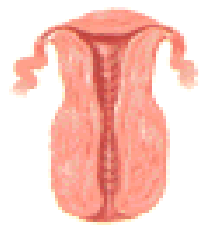
[Click to](#)

Uterus

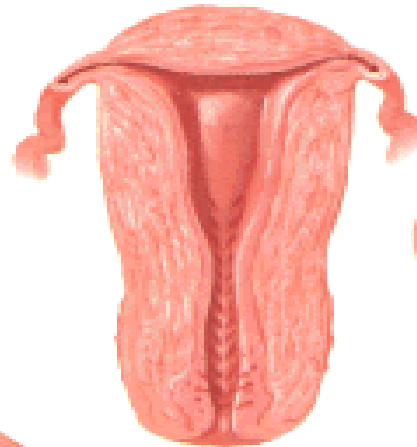
Changes with Age



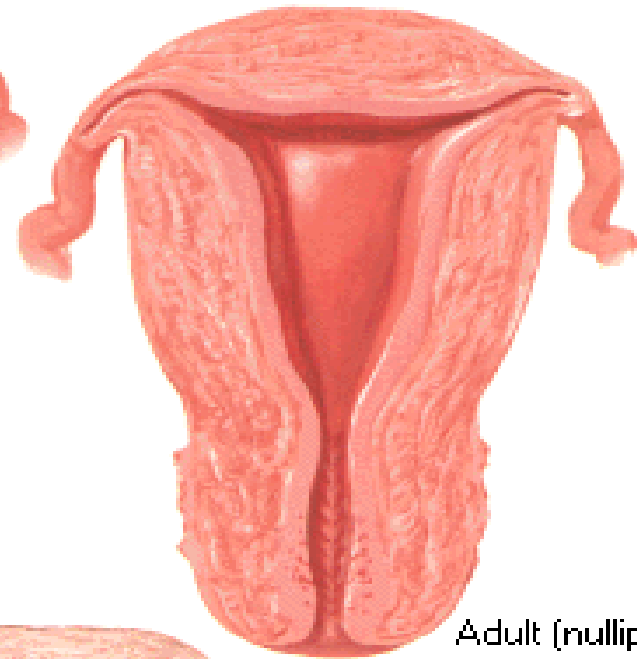
Newborn



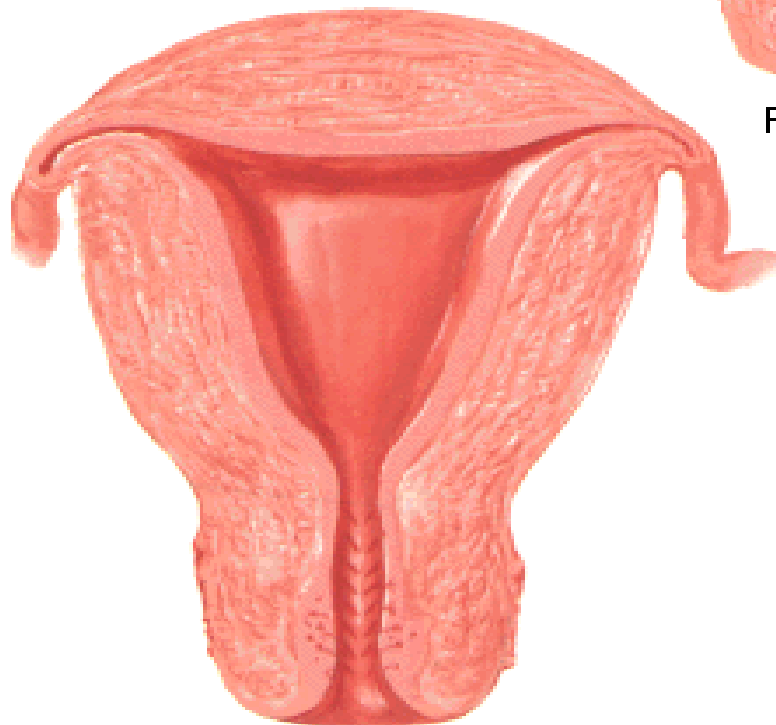
4 years



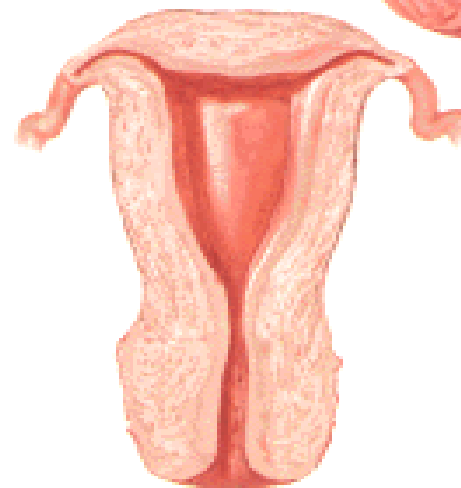
Puberty



Adult (nulliparous)



Adult (parous)



Adult (postmenopausal)

SUPPORTS OF UTERUS

- 1. LIGAMENTS (Primary supports):**
 - Round**
 - uterosacral**
 - transverse cervical**
 - pubocervical**

- 2. PERITONEAL FOLDS (Secondary supports):**
 - Uterovesical**
 - Rectouterine**
 - Broad ligament**

- 3. FIBROMUSCULAR & MECHANICAL SUPPORT**
 - Position of uterus**
 - Pelvic diaphragm**
 - Urogenital diaphragm**
 - Perineal body**

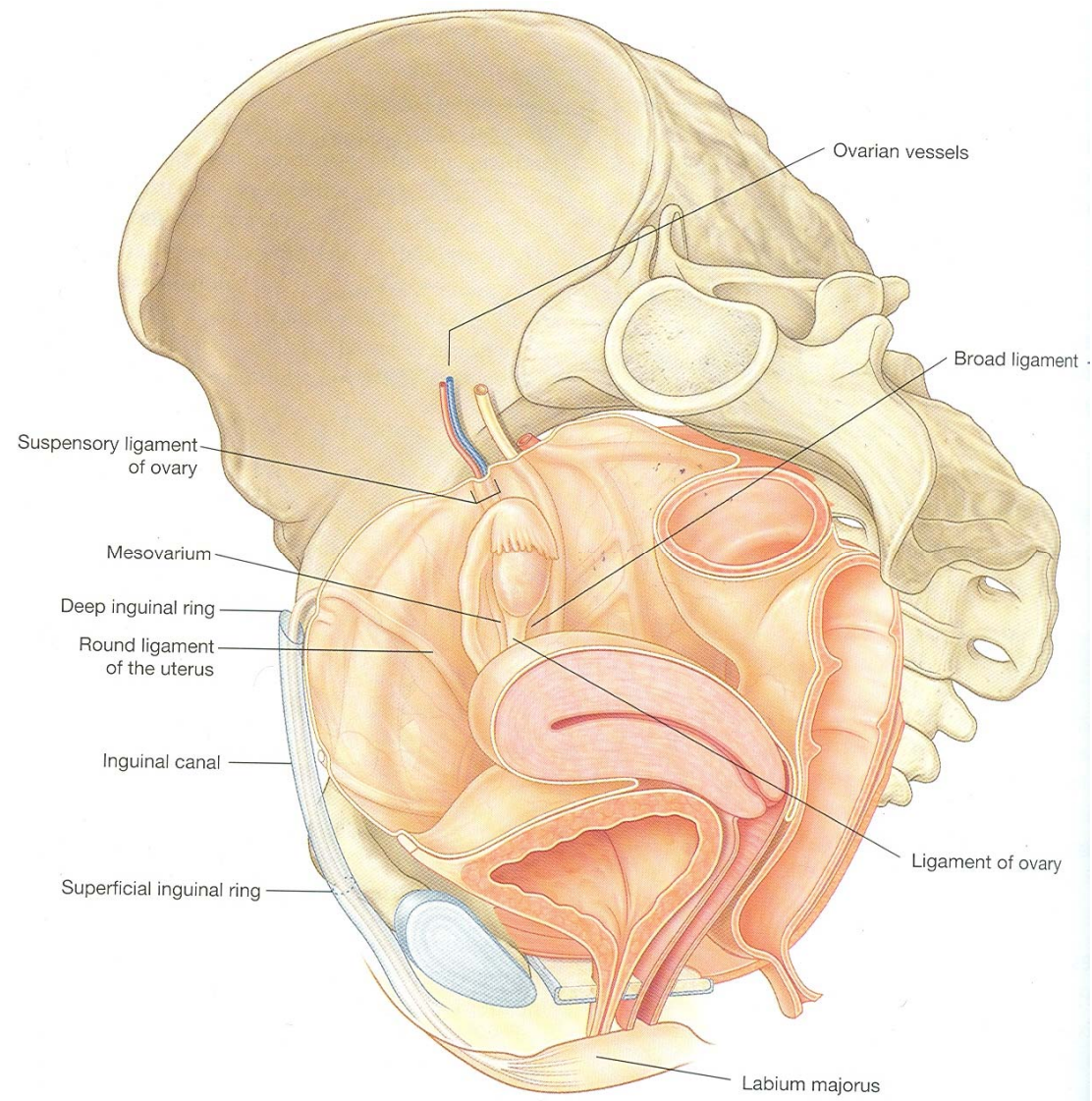
Round Ligament:

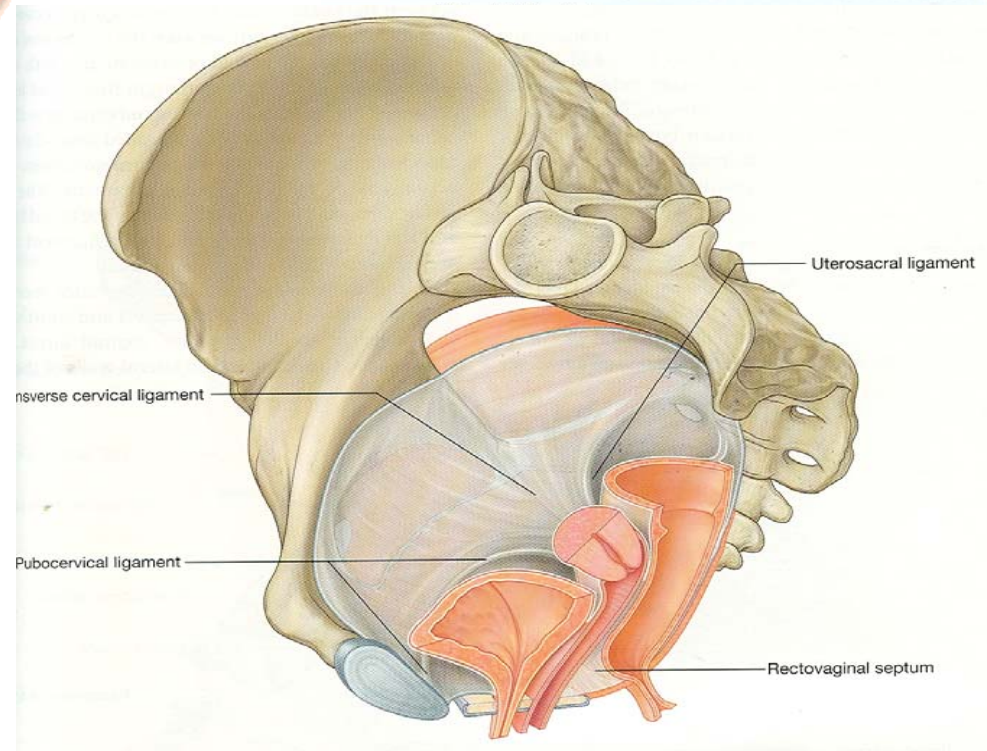
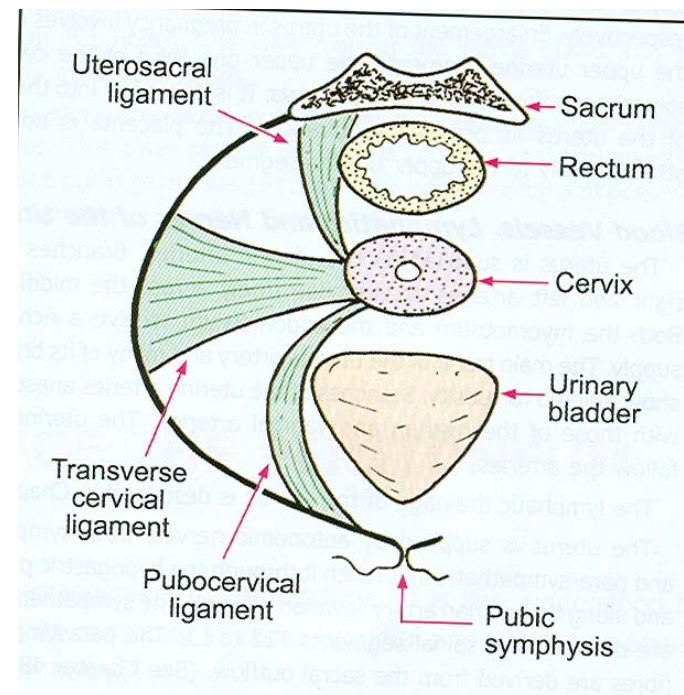
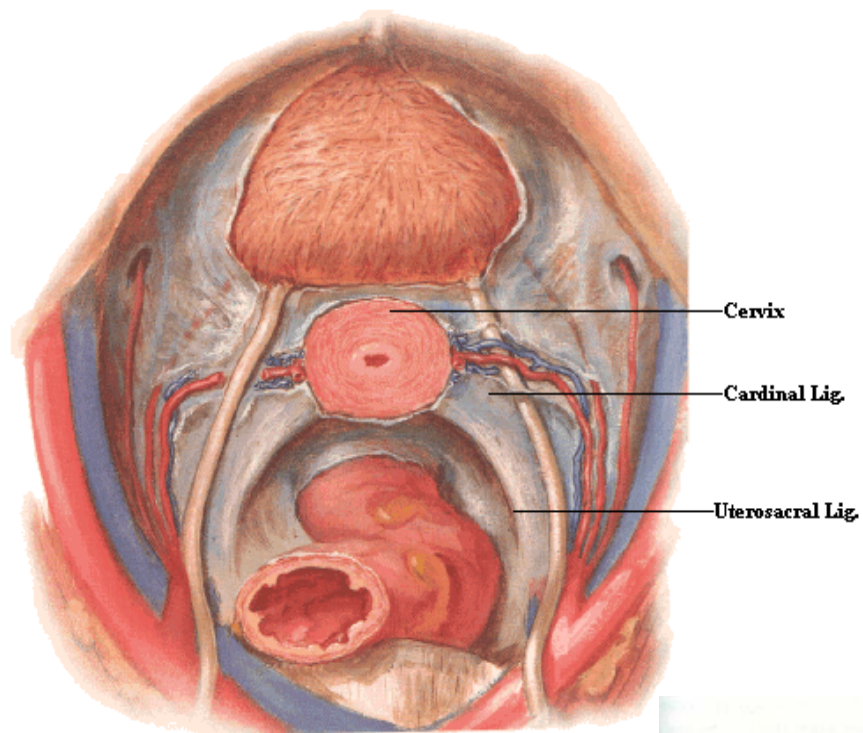
Flattened cord, 12 cms

Superolat. Wall of
uterus to mons pubis

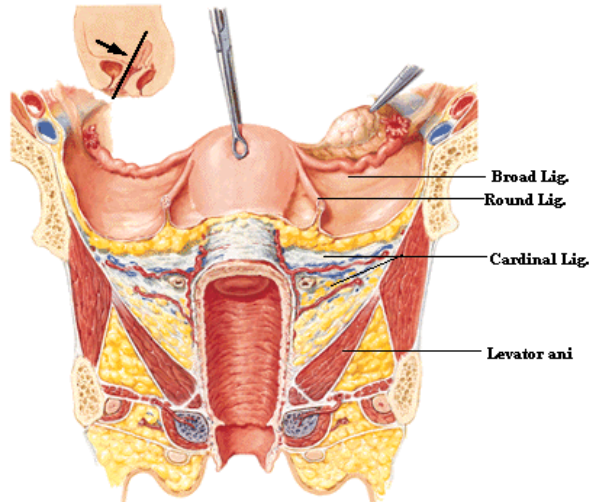
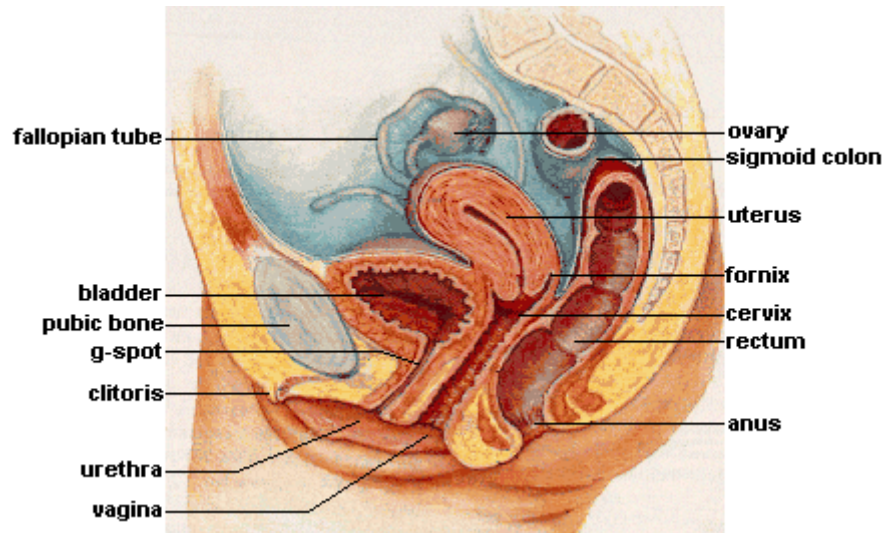
enters inguinal canal
contains few muscle
fibres

remanant of
gubernaculum

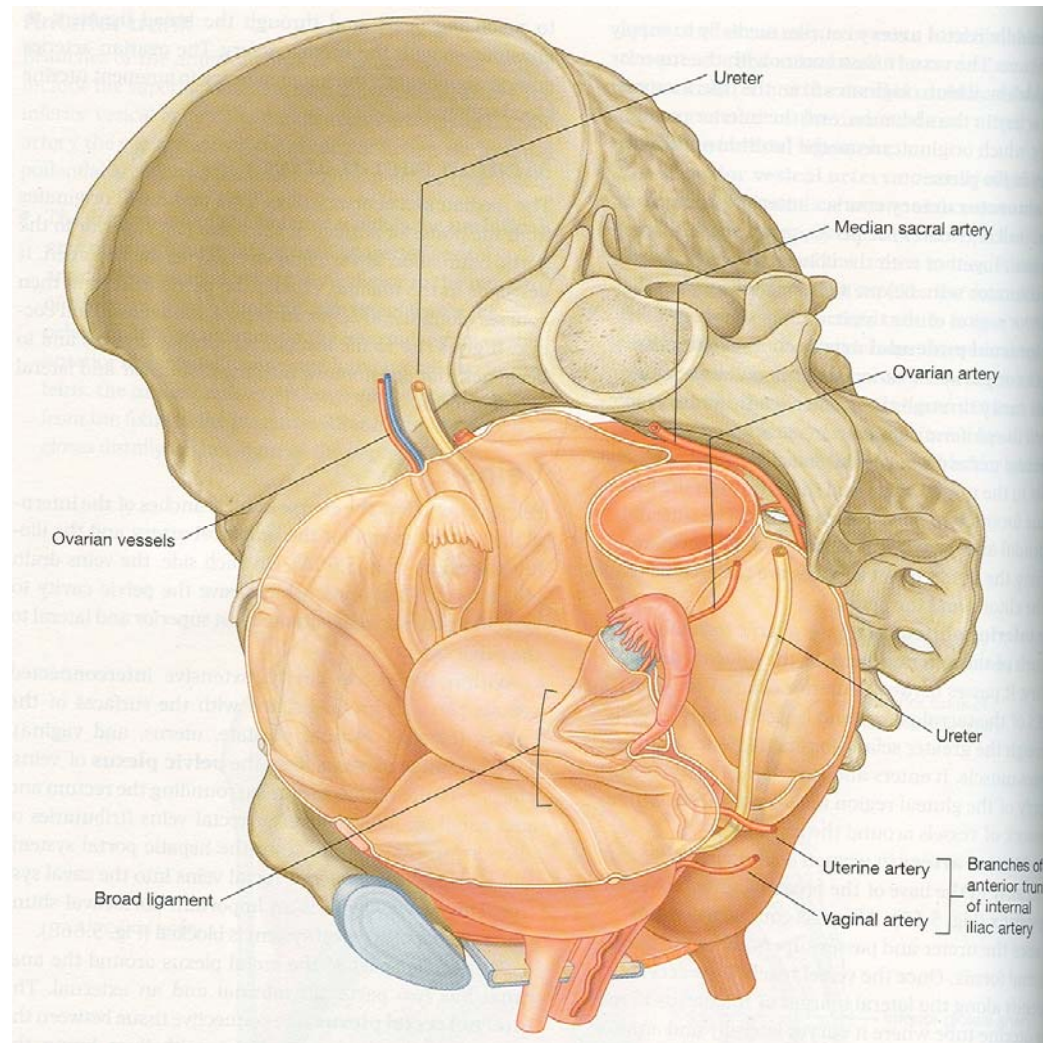




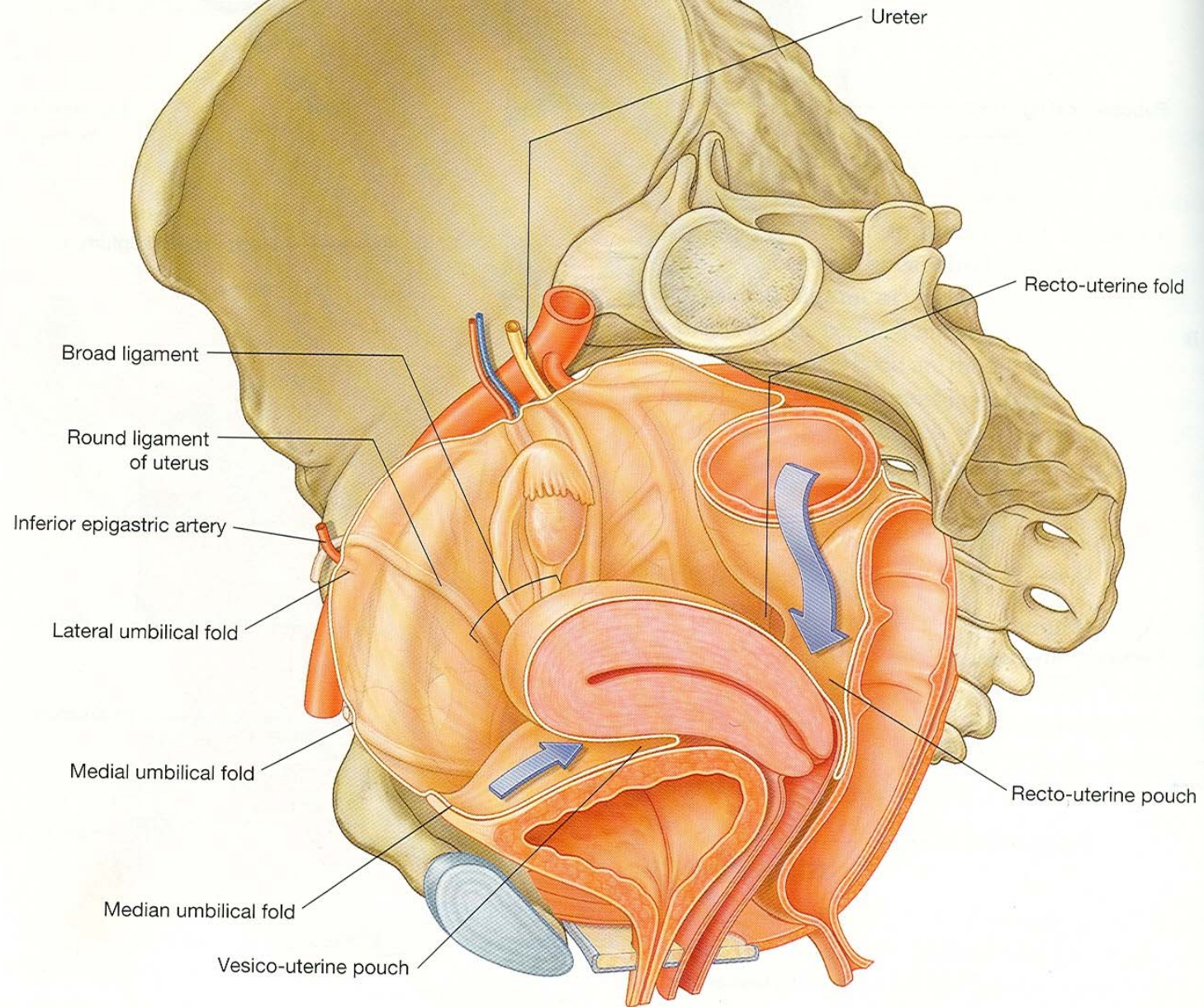
SECONDARY SUPPORT



- Uterovesical pouch
- Rectouterine pouch
- Broad ligament



A



Broad Ligament

Double fold of peritoneum

Mesosalpinx

Mesoovarium

Mesometrium

Contents:

Parametrium

Uterine tube

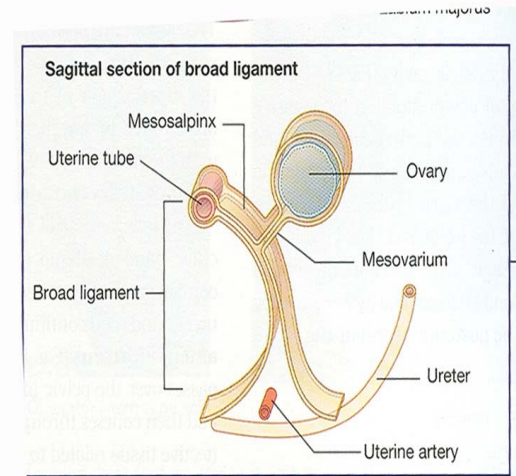
Round ligament of uterus

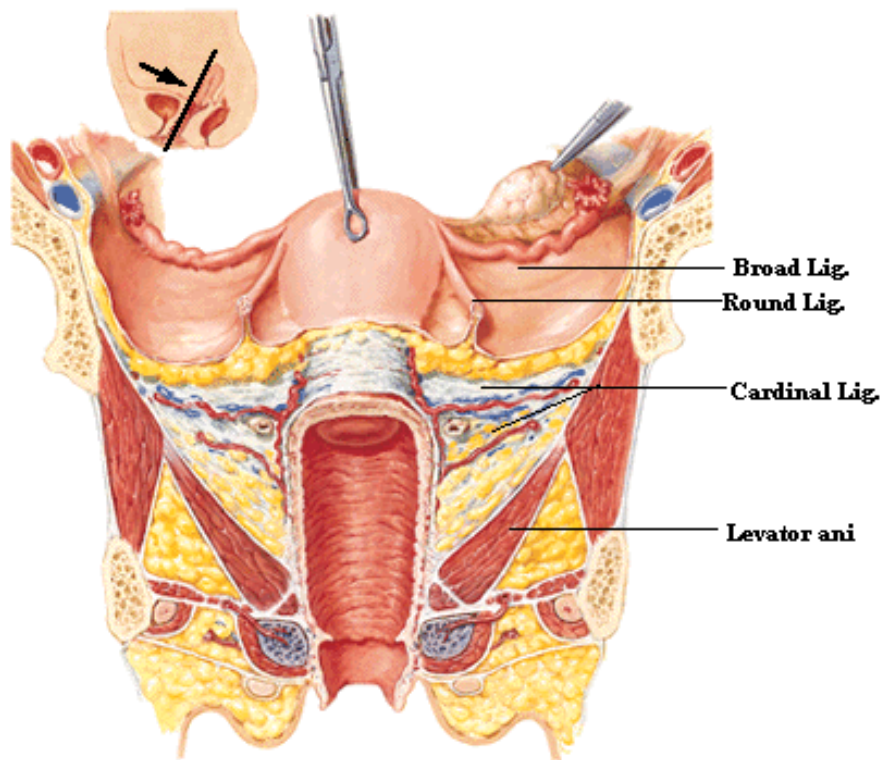
Ligament of Ovary

Vessels: uterine, ovarian

Nerves, lymphatics

Remnants: epoophoron, paraoophoron
duct of Gartner

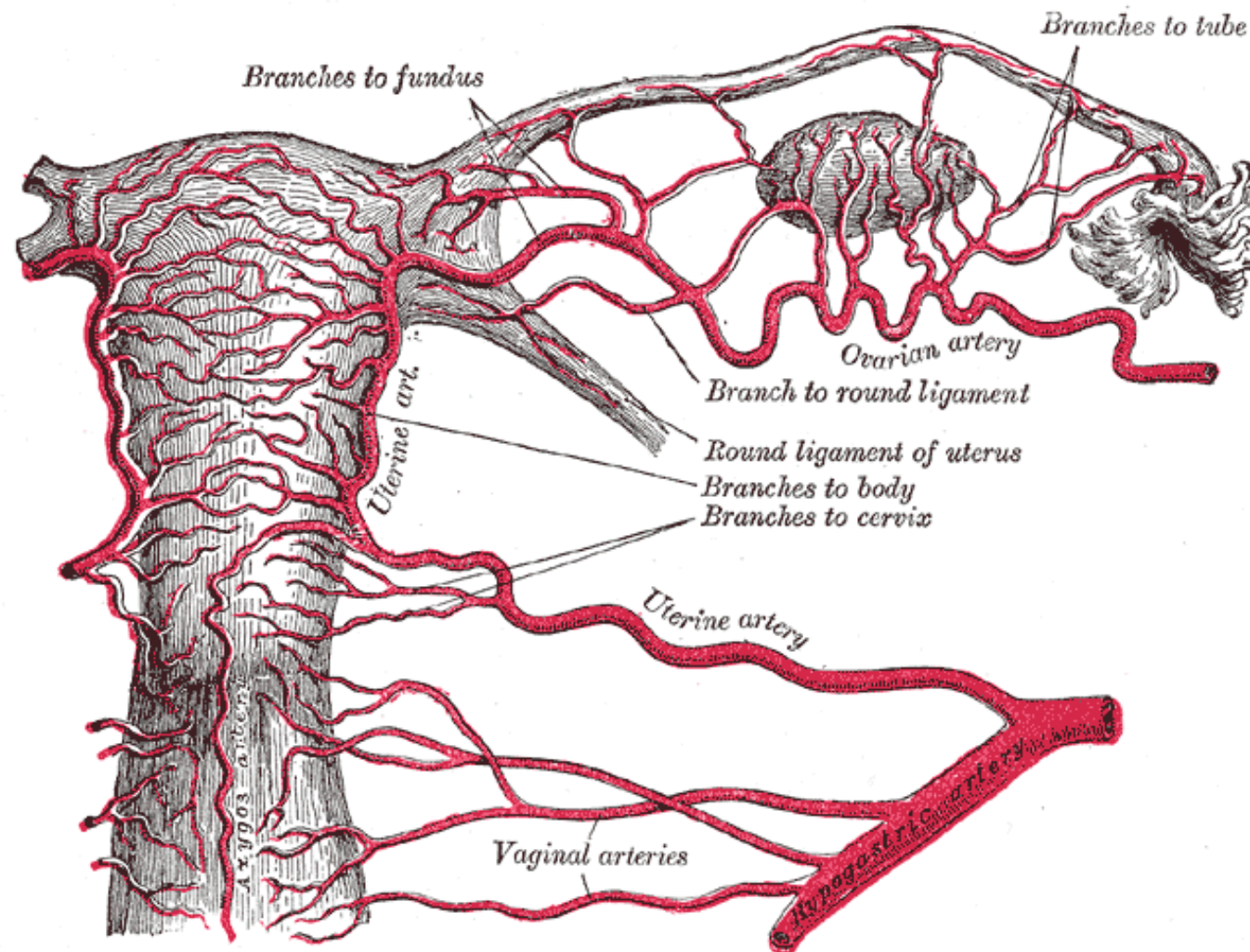




3. Muscular support

- Pelvic diaphragm
- Urogenital diaphragm
- Perineal body

BLOOD SUPPLY



Lymphatics

- Fundus: Lumbar lymph nodes
Ext. illiac lymph nodes
- Body: Ext. illiac lymph nodes
- Cervix: Int. illiac lymph nodes
sacral
rectal

NERVE SUPPLY

Inferior hypogastric plexus

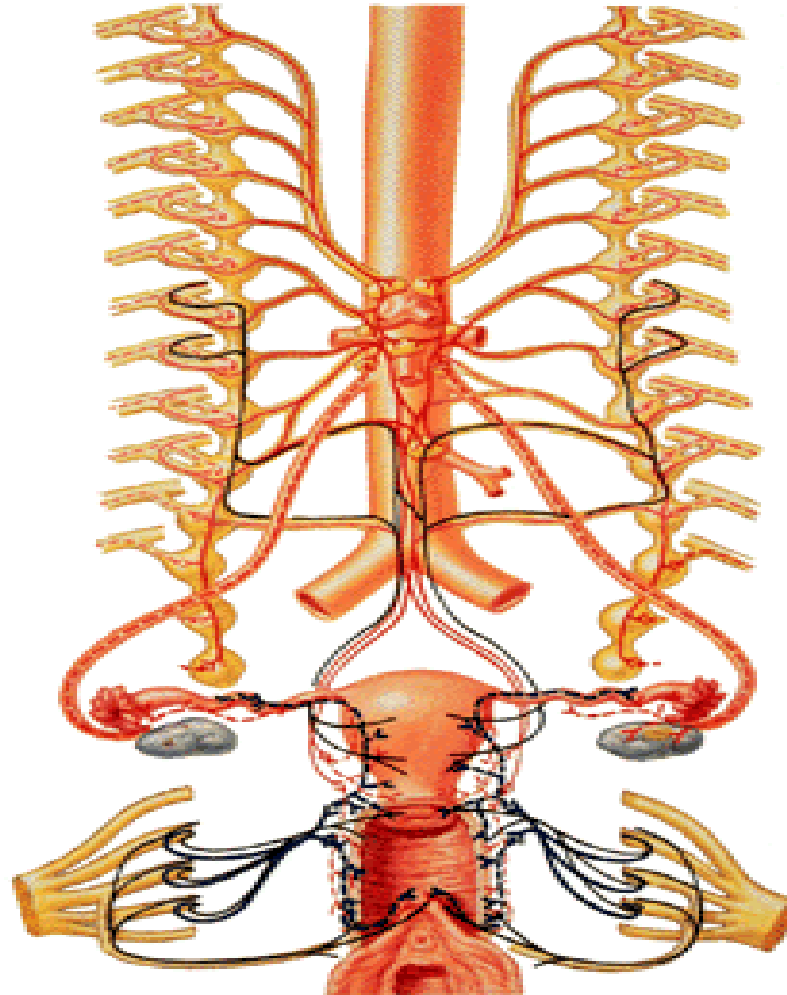
Sympathetic: T12-L1

Vasoconstrictor; contraction

Parasympathetic: S2-4

Vasodilator; inhibitor

Sympathetic fibers
Presynaptic ————
Postsynaptic - - - - -
Parasympathetic fibers
Presynaptic ————
Postsynaptic - - - - -
Afferent fibers ————



Applied Anatomy

- Cervical cancer
- Anesthesia for childbirth
- Examination of uterus
- Hysterectomy
- Prolapse of uterus

HYSTEROSALPINGOGRAPHY

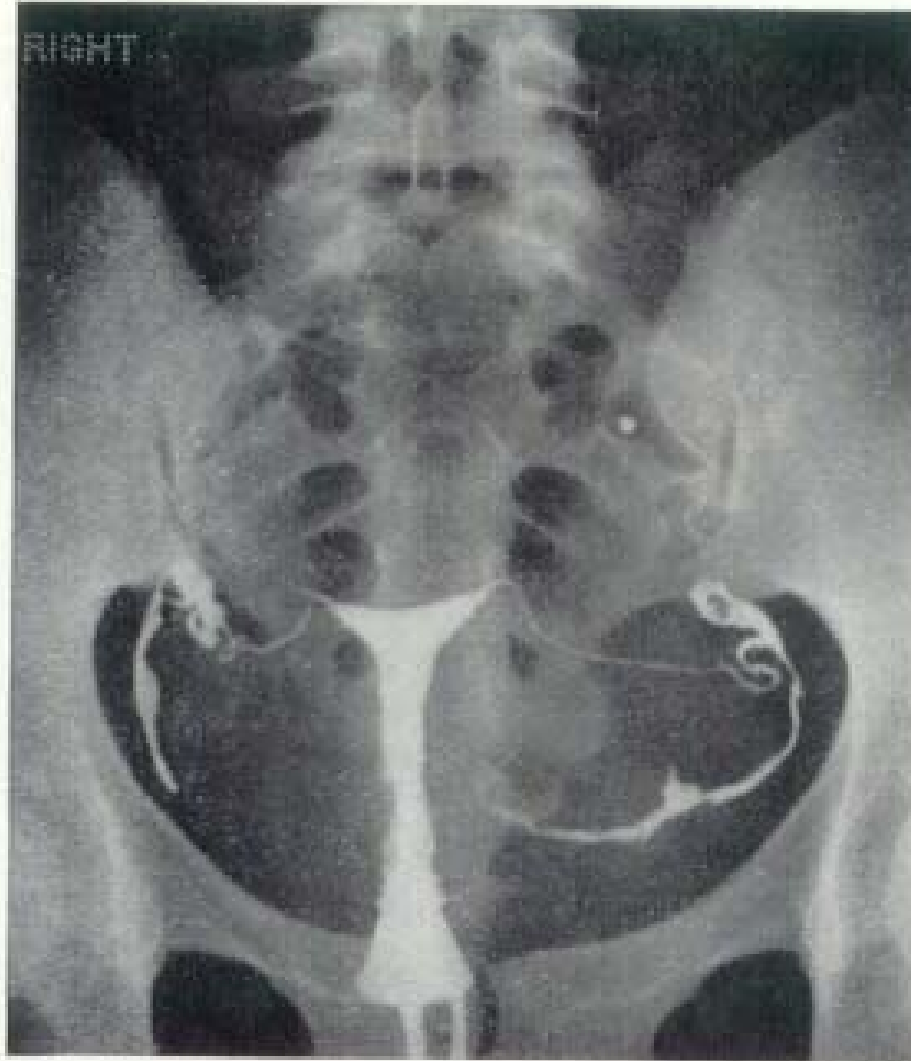


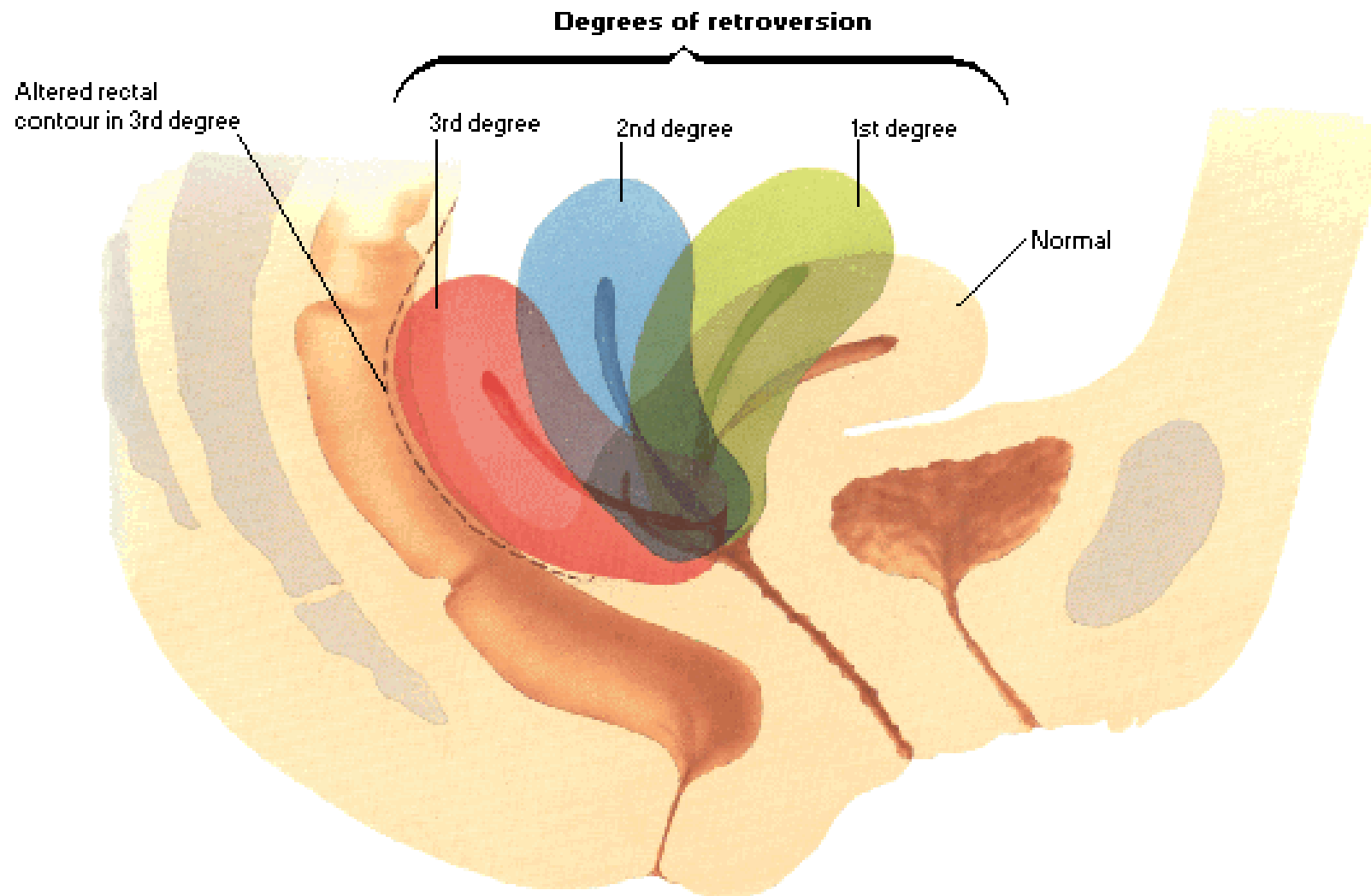
FIG. 235.—Radiograph of the uterus and uterine (Fallopian) tubes after the injection of iodized oil through a catheter (anterior view; subject supine).

ULTRASONOGRAPHY

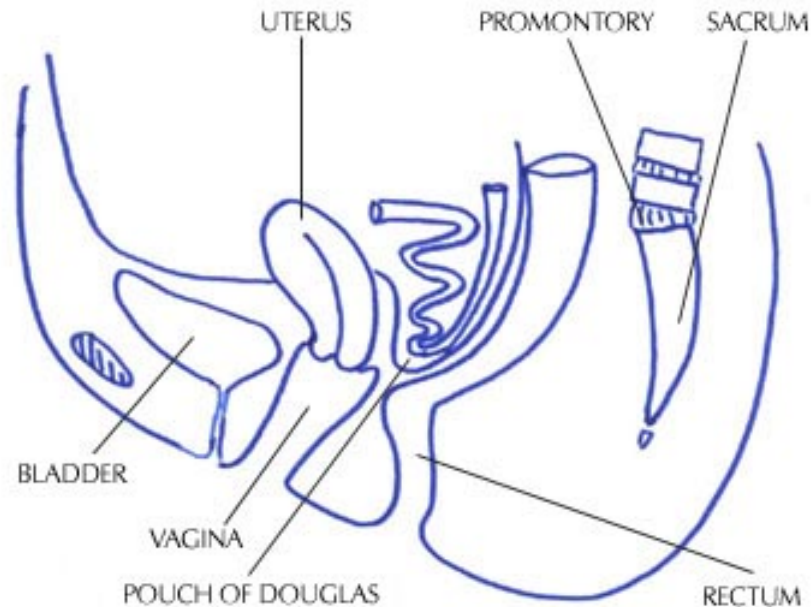


Uterus

Variations in Position



RECTOVAGINAL POUCH



- Also known as cul-de-sac

