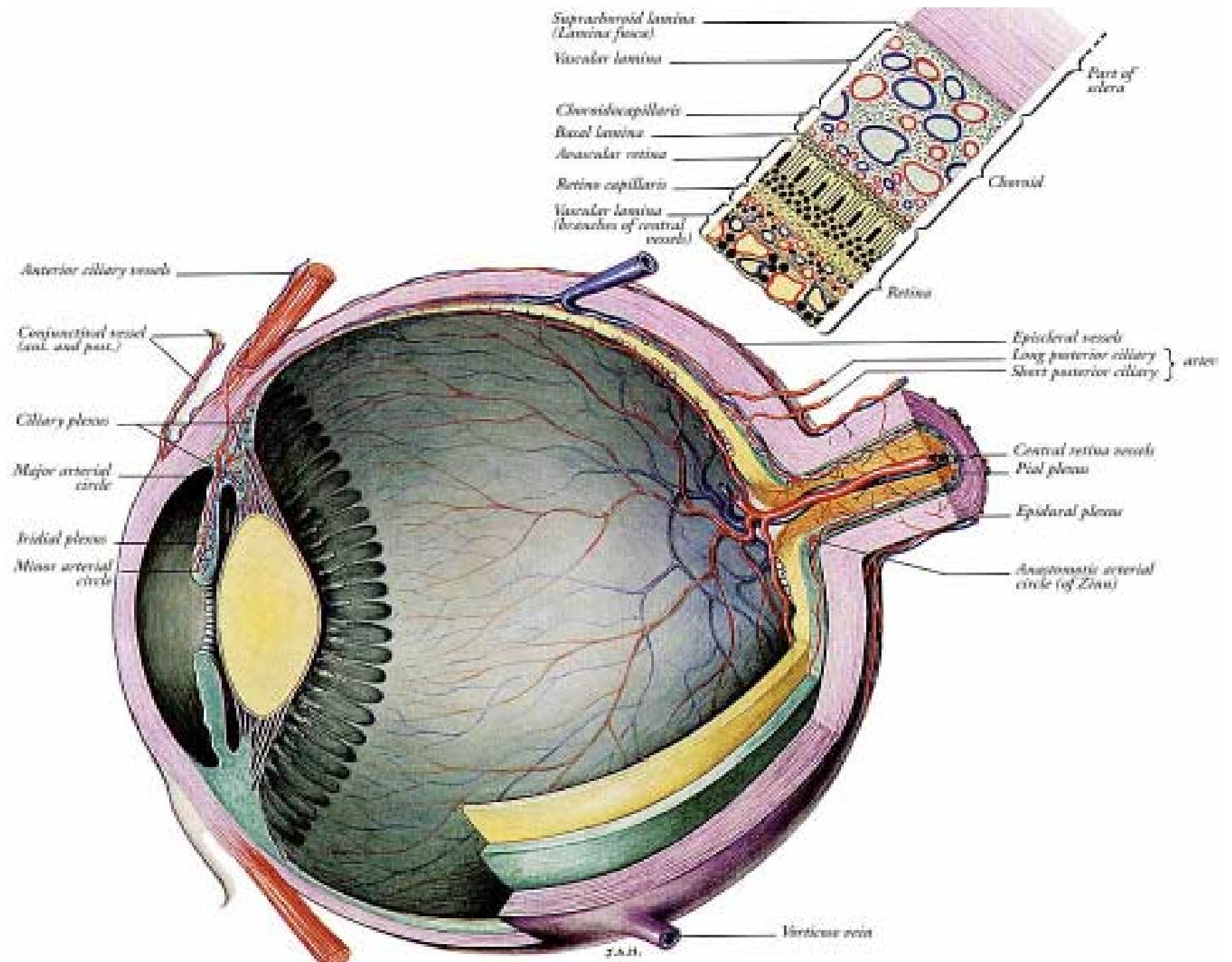


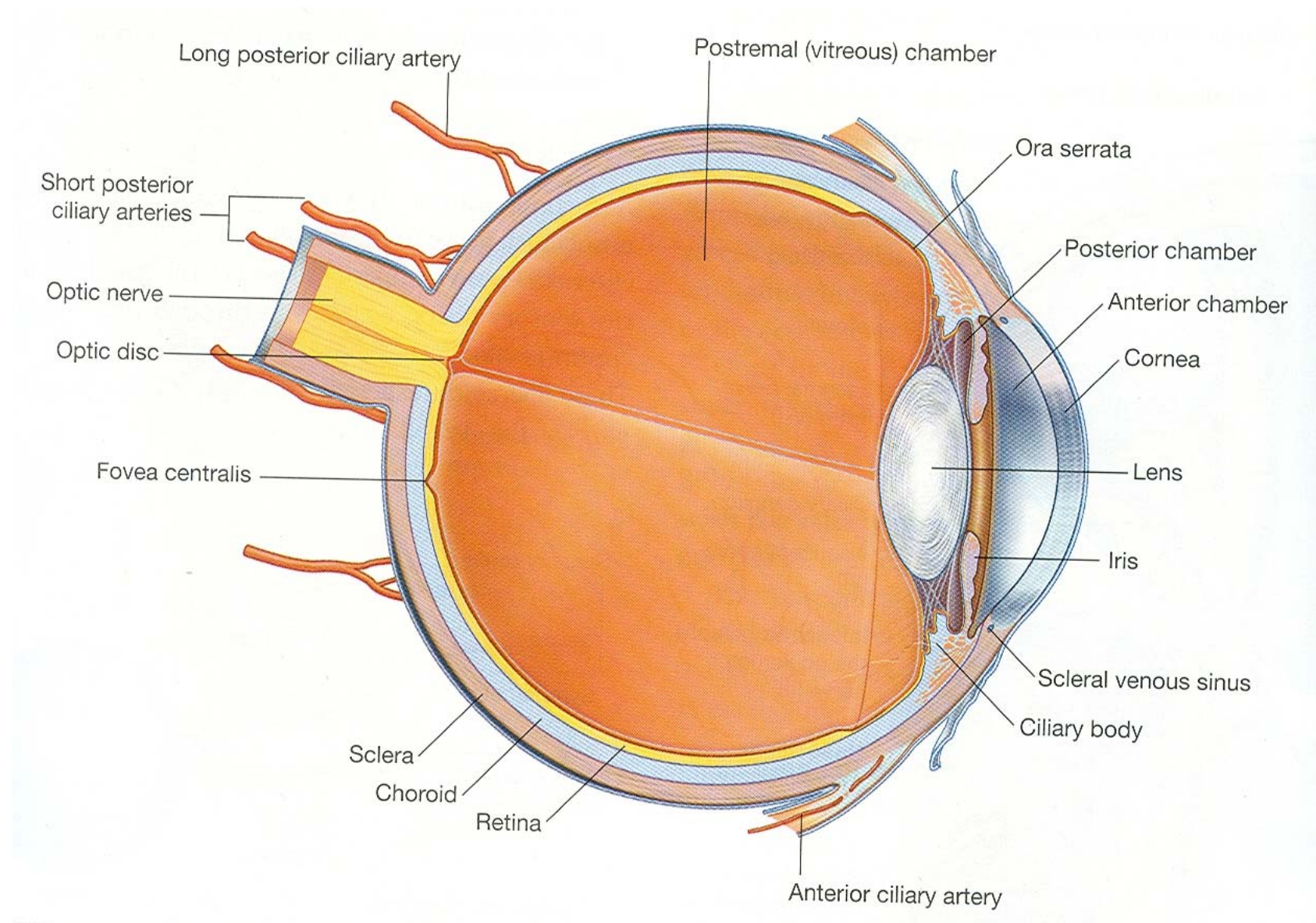
Eyeball

- Organ of sight
- Almost spherical, has a diameter of about 2.5cm.
- Made up of three coats
- Works like a camera
- The refractory media from before backwards are cornea, aqueous humor, lens & vitreous body

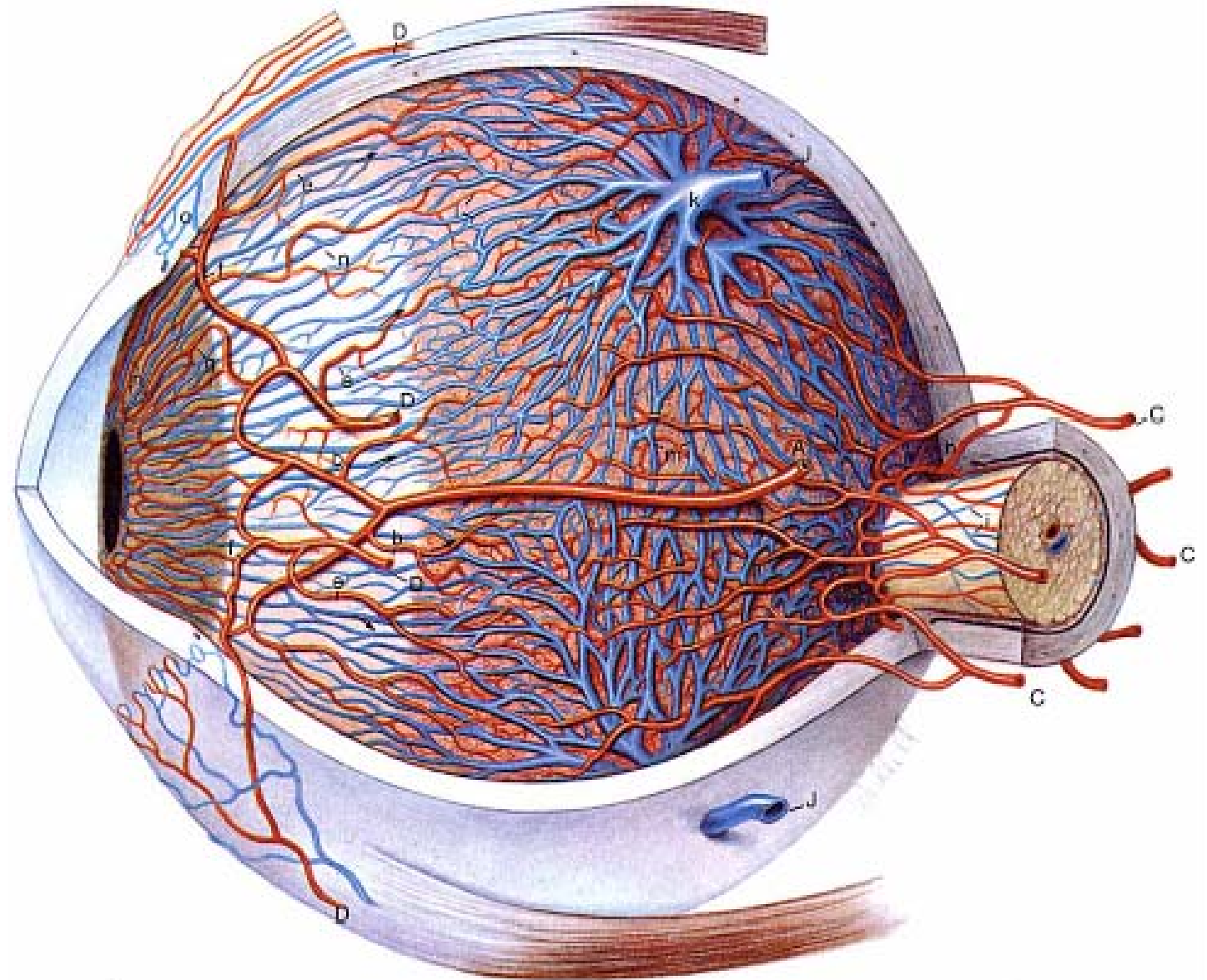


- Outermost fibrous coat- Sclera
- Middle vascular- Choroid, ciliary body & iris
- Inner nervous coat- Retina

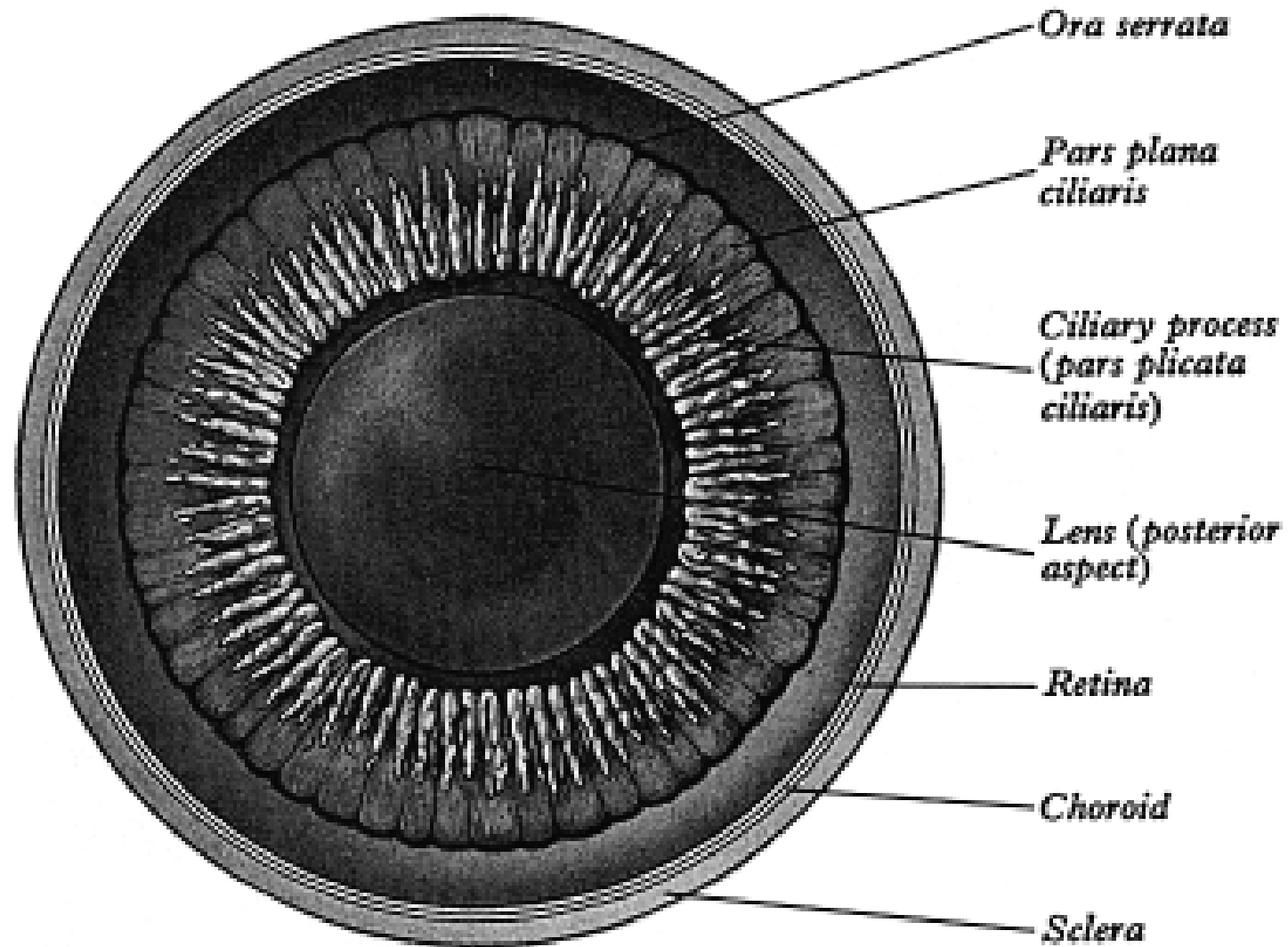
EYE BALL



Vascular supply



Ora serrata



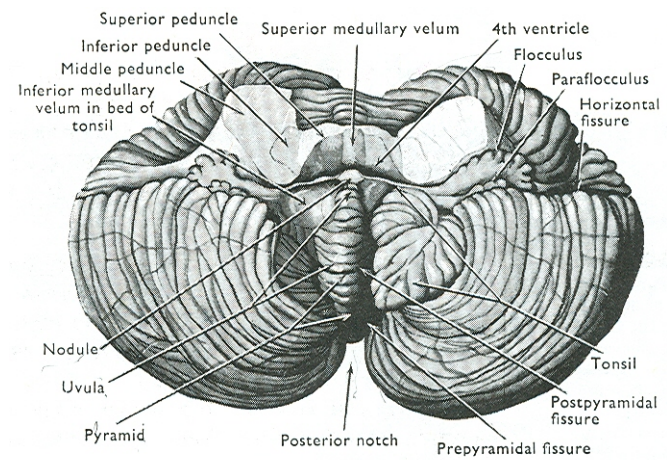
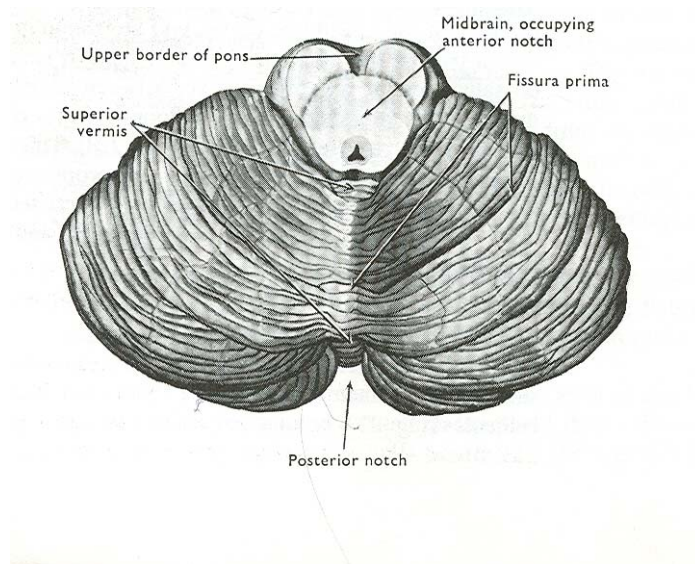
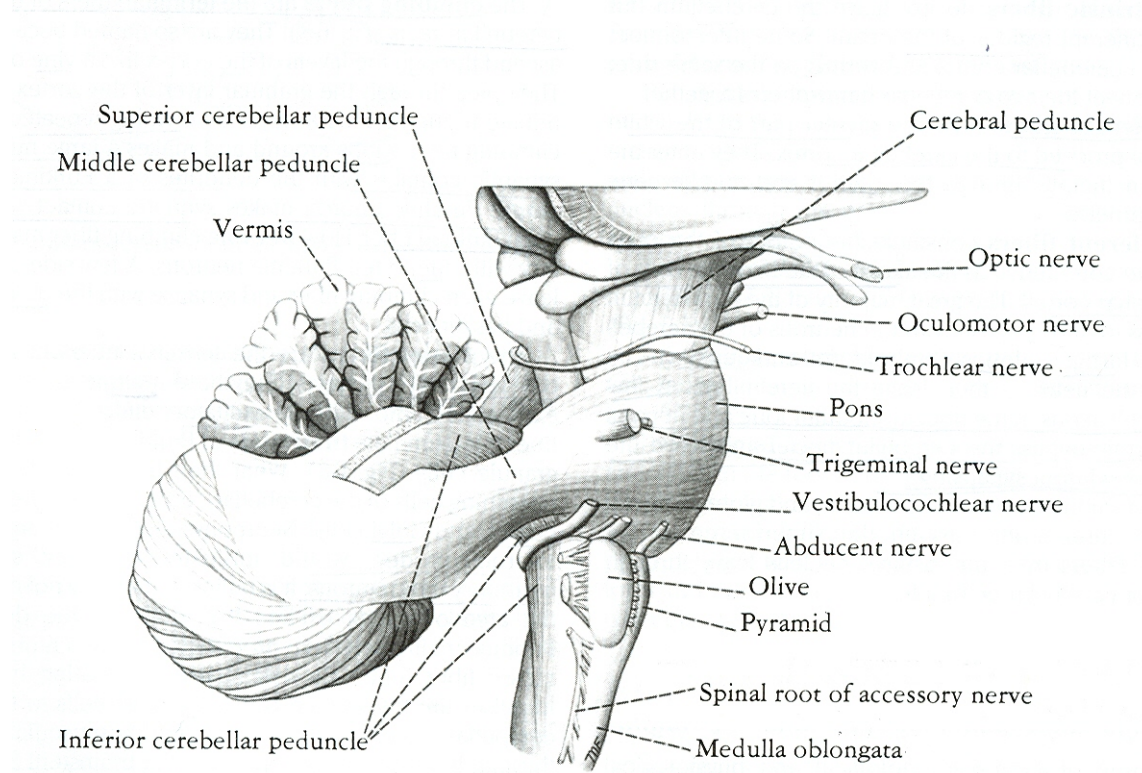
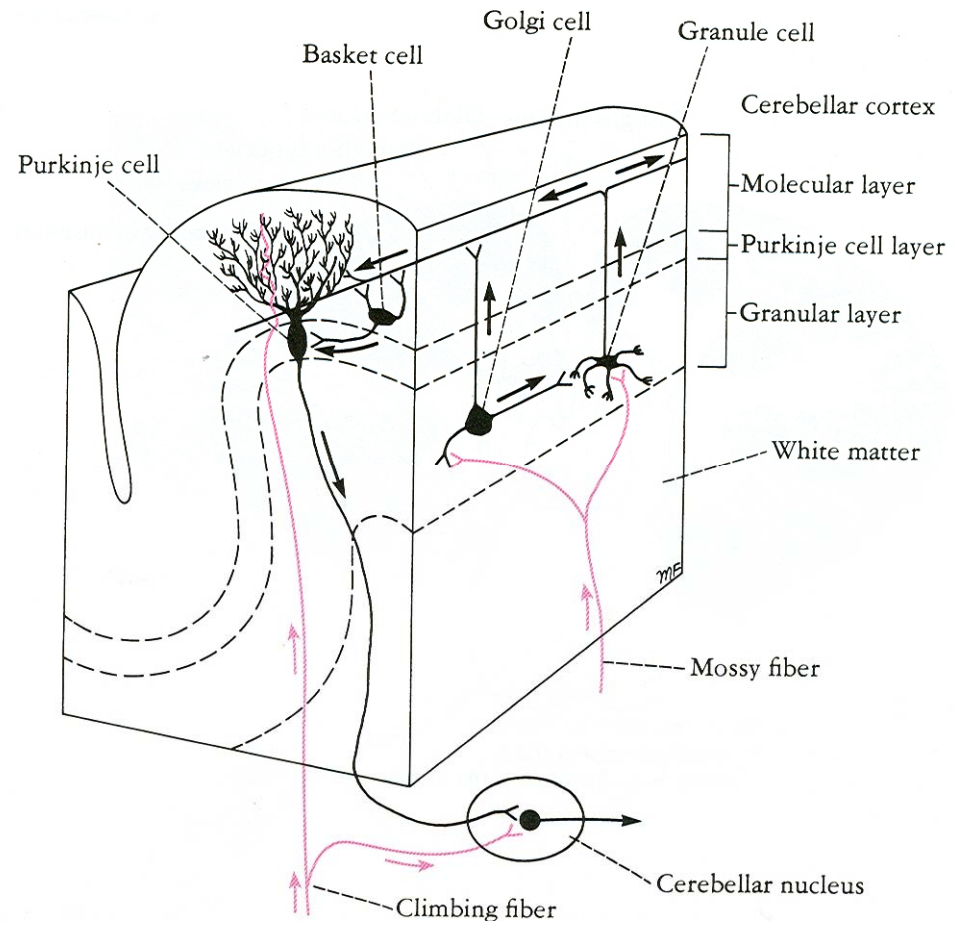
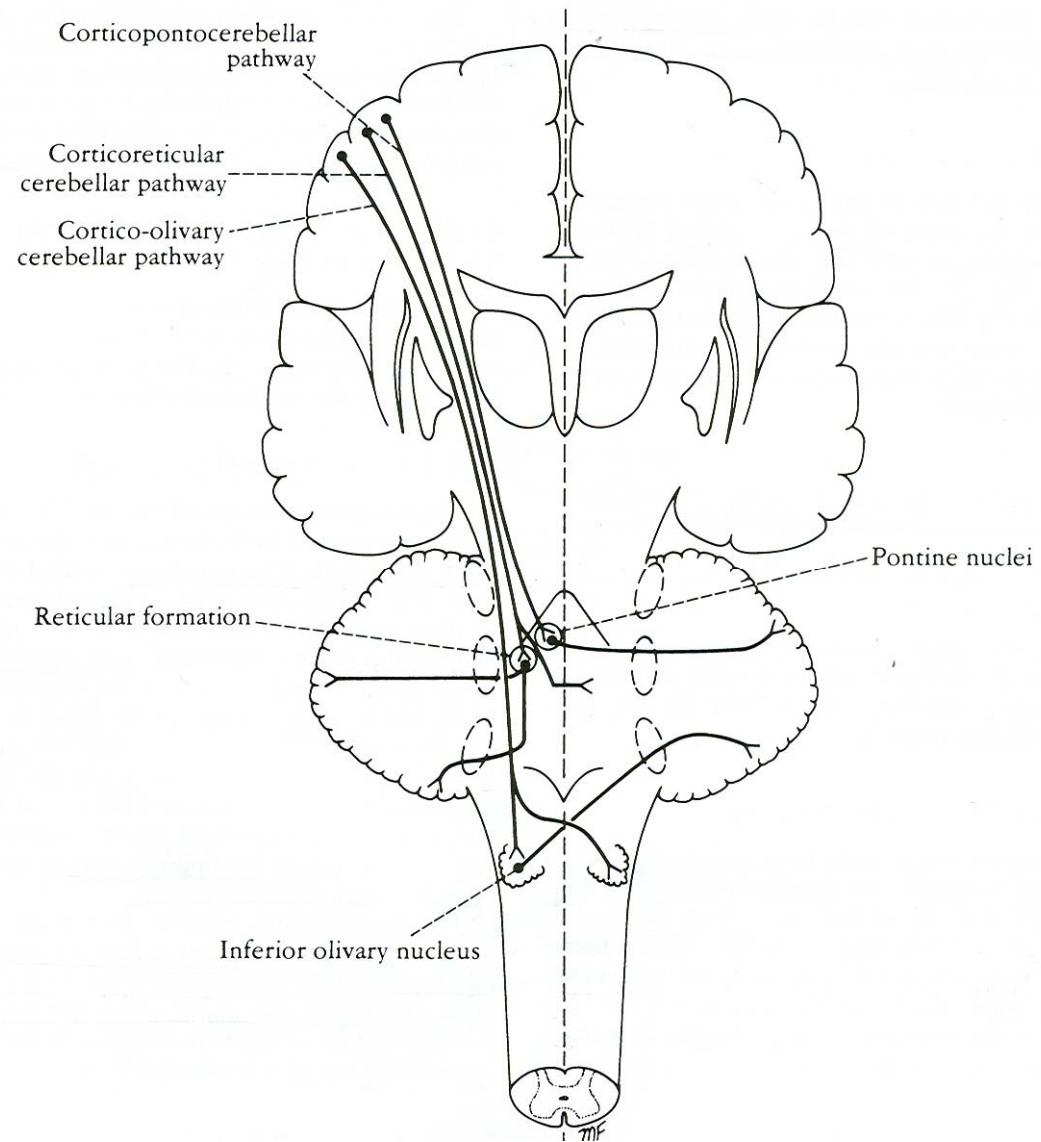
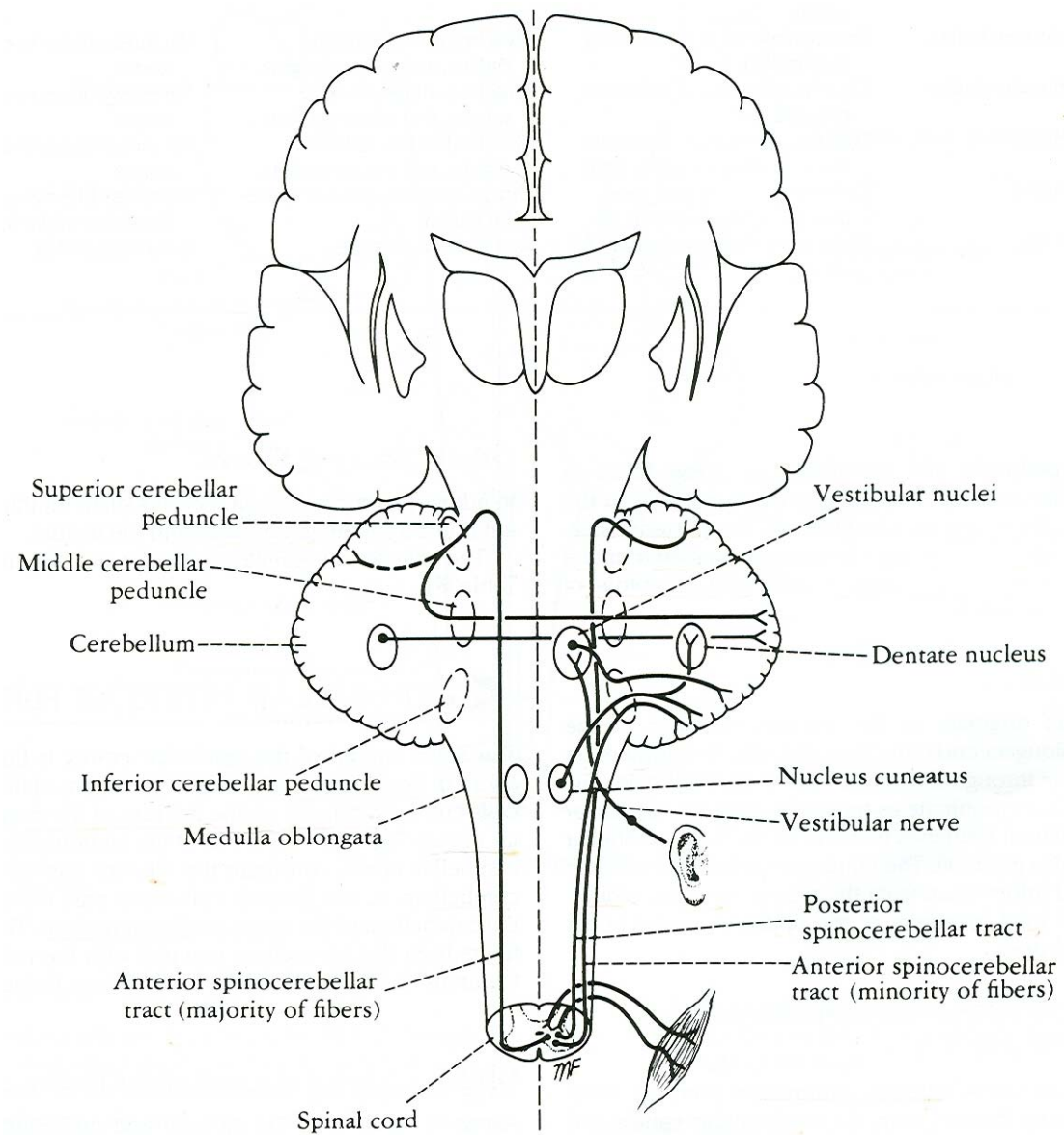


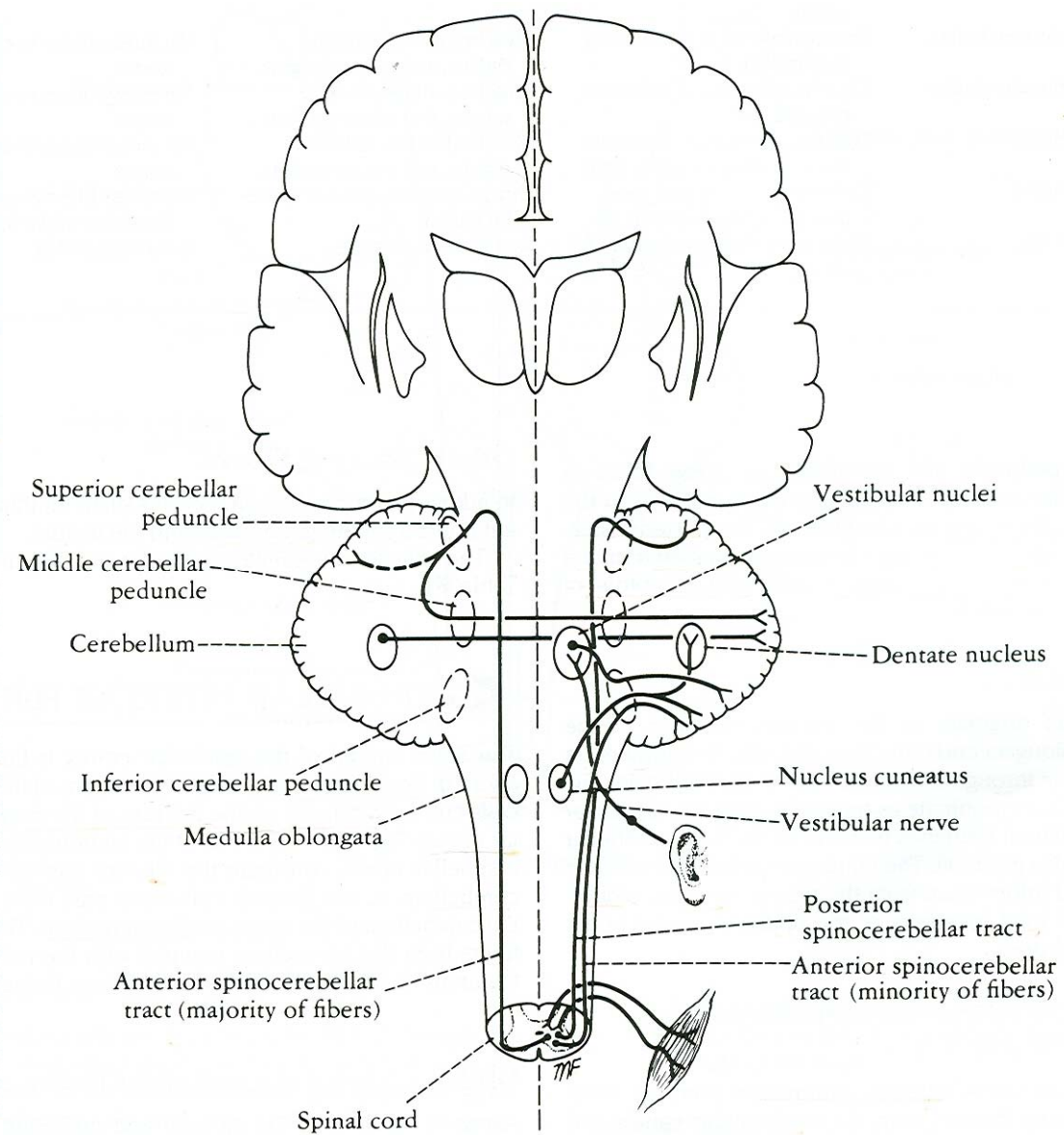
Figure 6-8 Functional organization of the cerebellar cortex. The arrows indicate the direction taken by the nervous impulses.











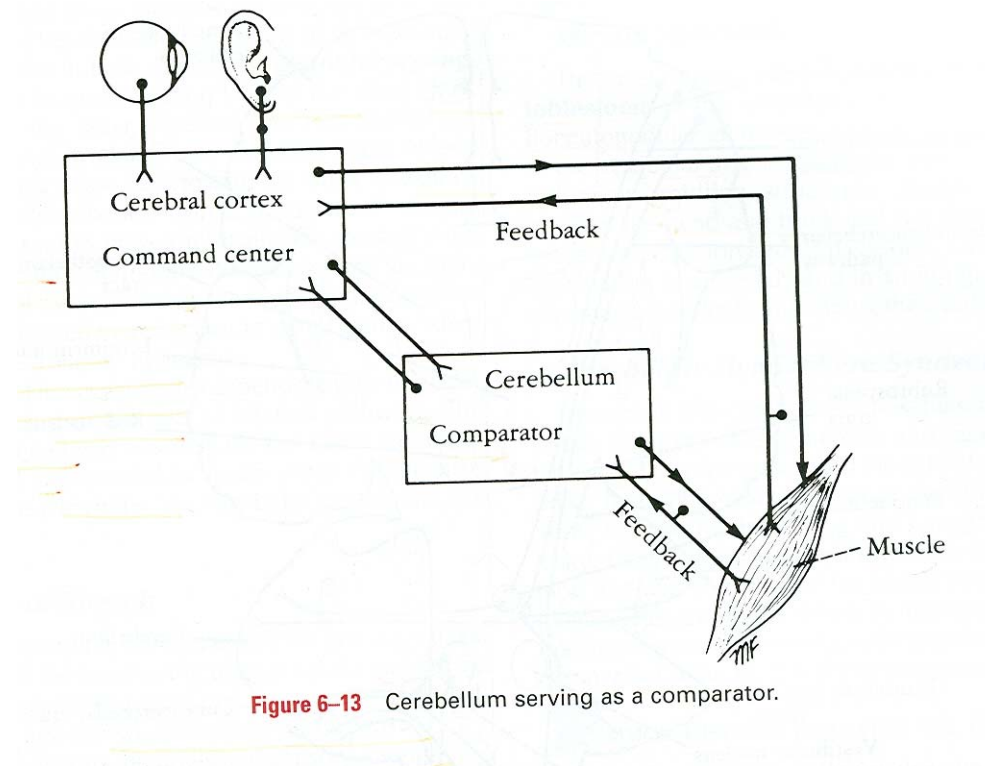


Figure 6-13 Cerebellum serving as a comparator.