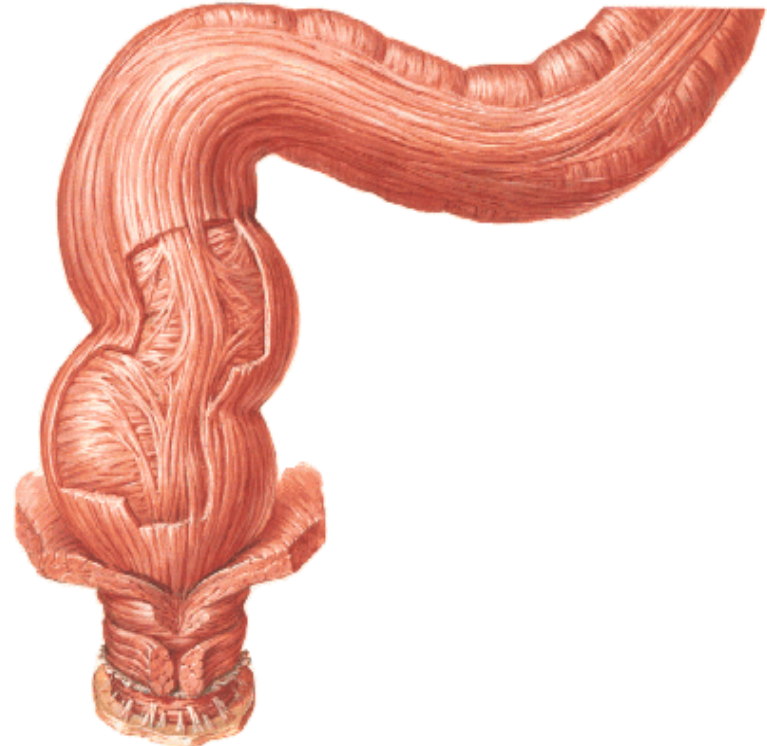
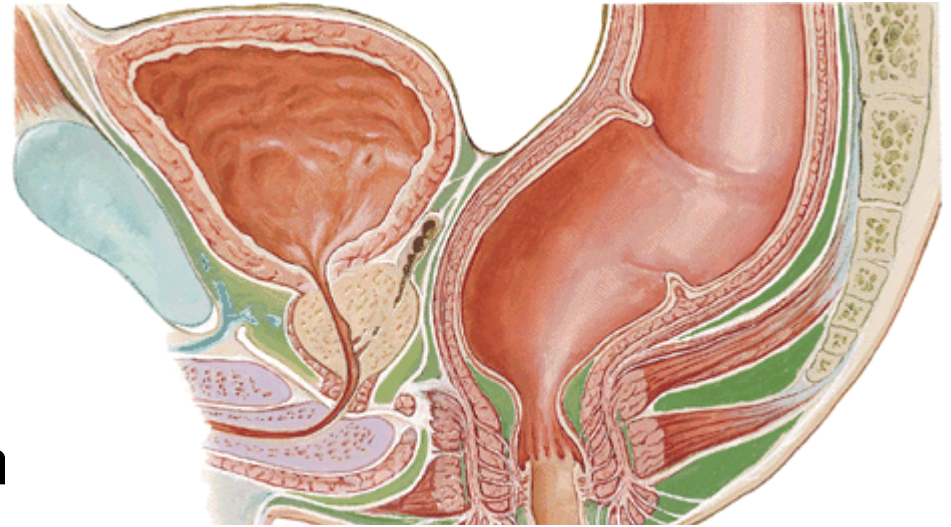


RECTUM

- Distal part of large gut
- Present in lesser pelvis
- Between sigmoid colon & anal canal
- Curved anteroposteriorly and sideways
- Sacculations, appendices epiploicae and taenia coli absent

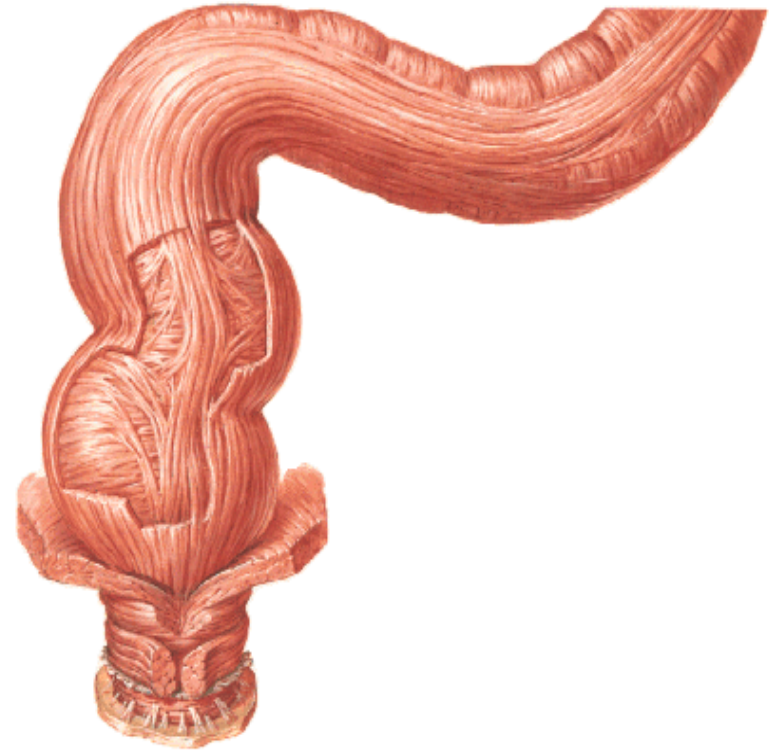
LOCATION

- Anterior to lower 3 pieces of sacrum
 - From Recto sigmoid junction at lower end of sigmoid mesocolon to Anorectal junction
- In males – Anorectal junction opposite apex of prostate



DIMENSIONS

- Approximate 12 cm long
- Upper part diameter equals sigmoid (4 cm)
- Lower part dilated – rectal ampulla
- Clinically – 15 cm above external anal margin



COURSE

Sacral flexure - Descends along sacrococcygeal curve –

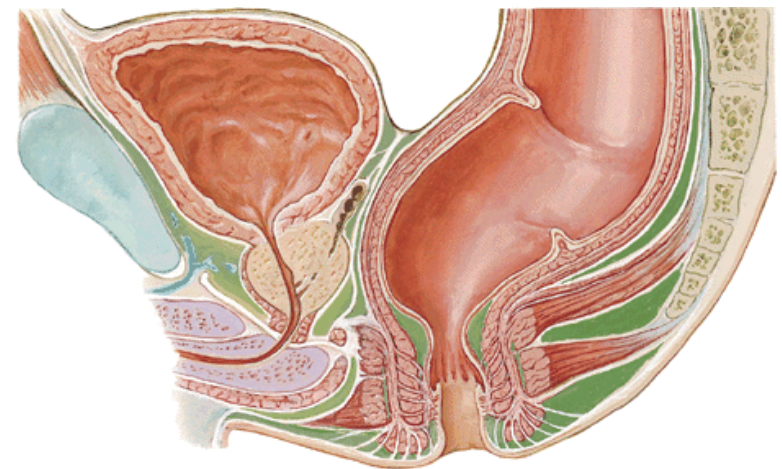
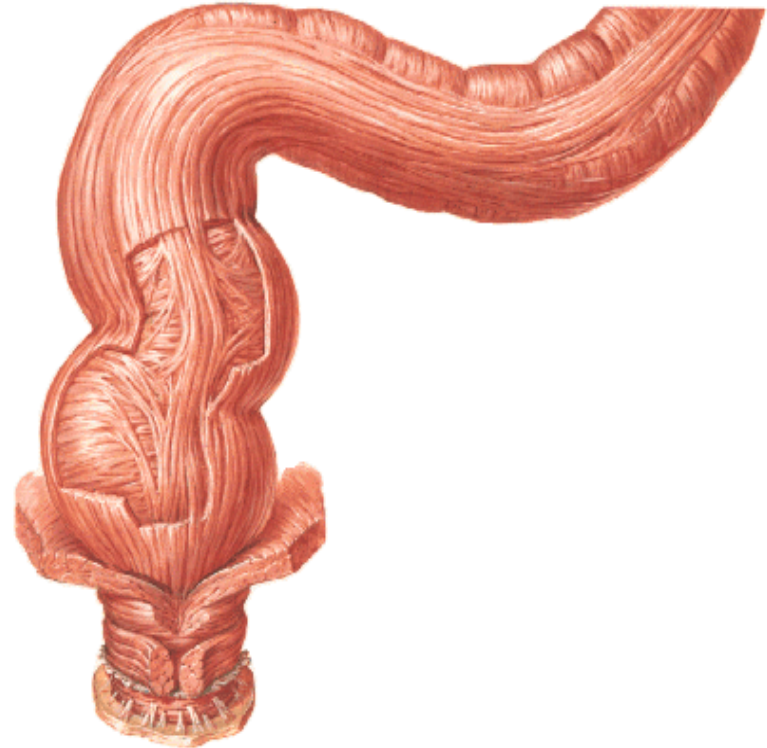
Downwards and backwards, downwards and finally downwards and forwards

Perineal flexure - posterior bend at Anorectal junction

Both ends in median plane

Three lateral curves

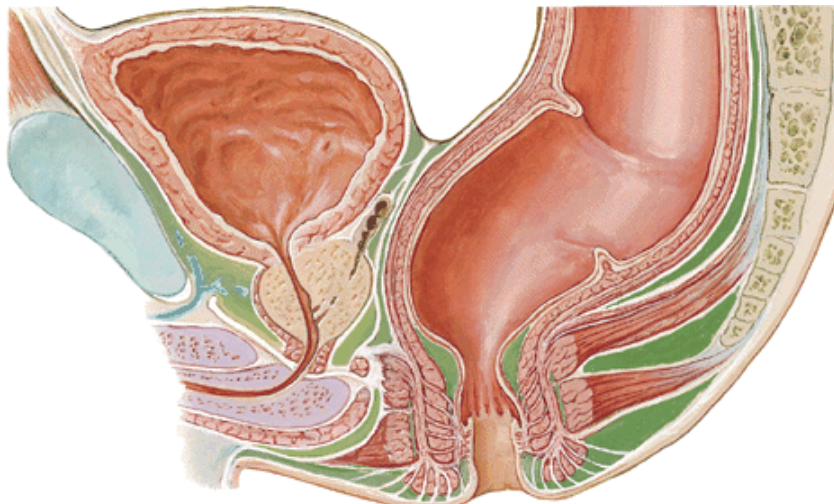
- Upper convex to right
- Middle convex to left (Most prominent)
- Lower convex to right



RELATIONS

Peritoneal

Upper 1/3 – peritoneum front and sides



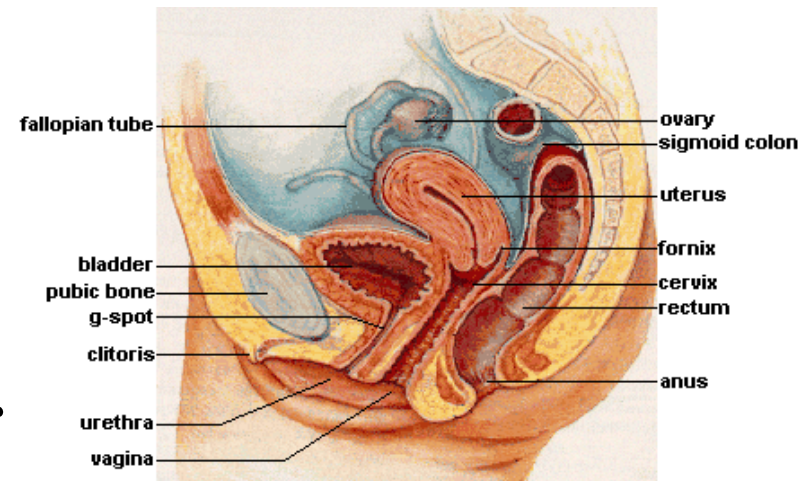
orly

floor

uterine pouch

Male – 7.5 cm

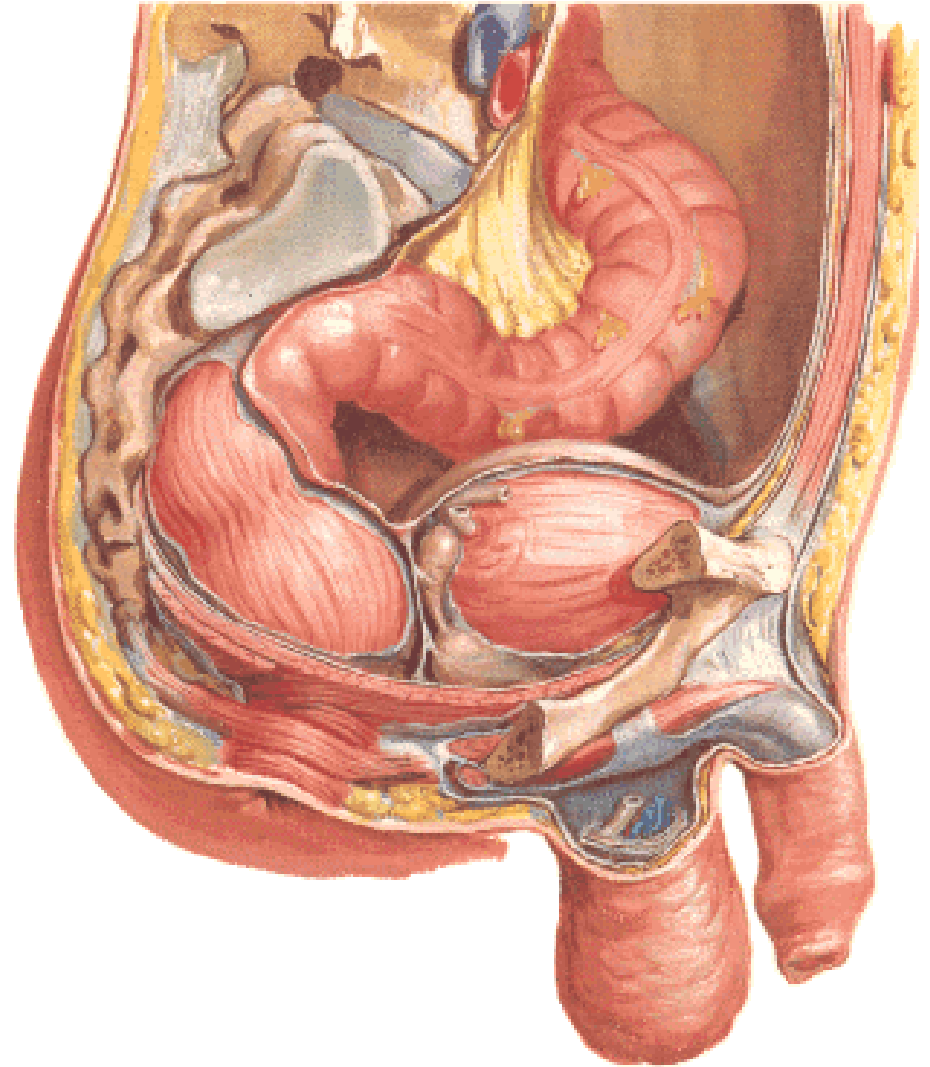
Females – 5.5. cm



RELATIONS VISCERAL

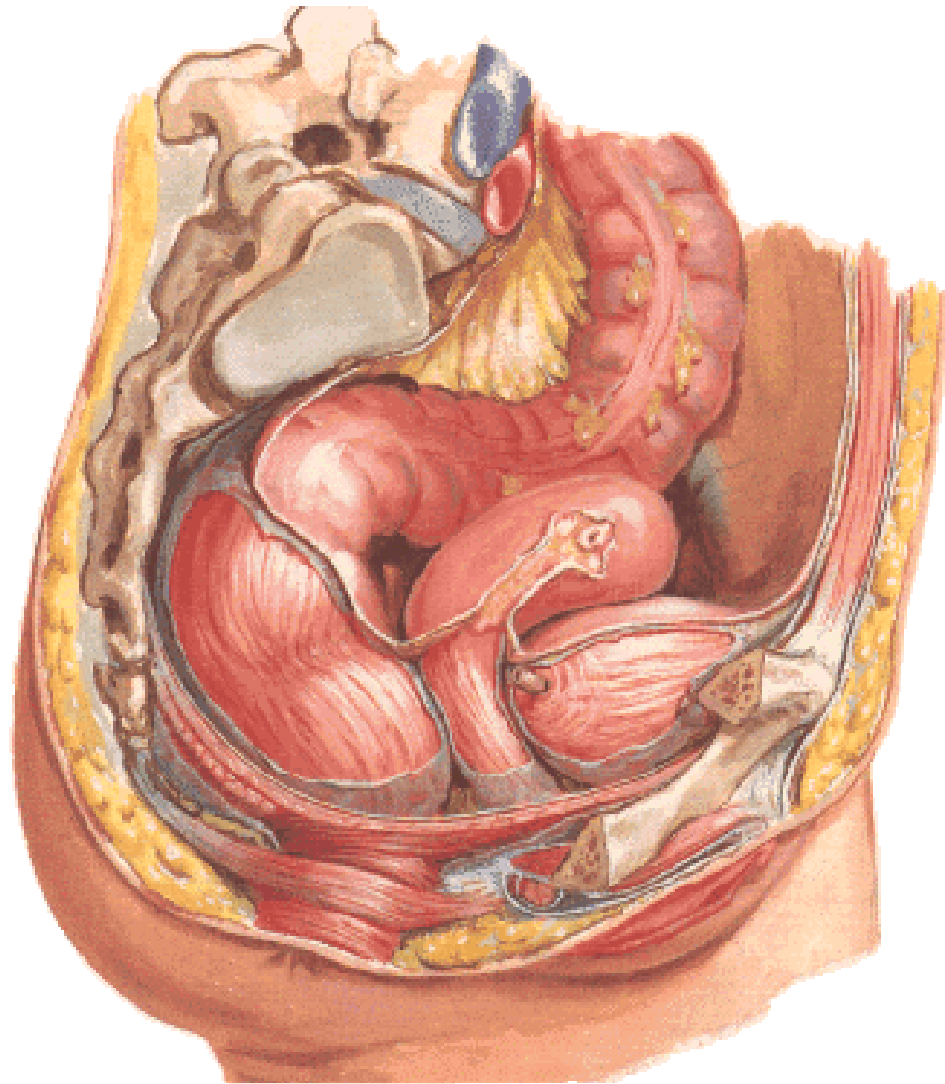
Males:

- Upper 2/3 – RV pouch – coils of intestine and sigmoid colon**
- Lower 1/3 – Base bladder, seminal vesicles, Ductus deferens, prostate**



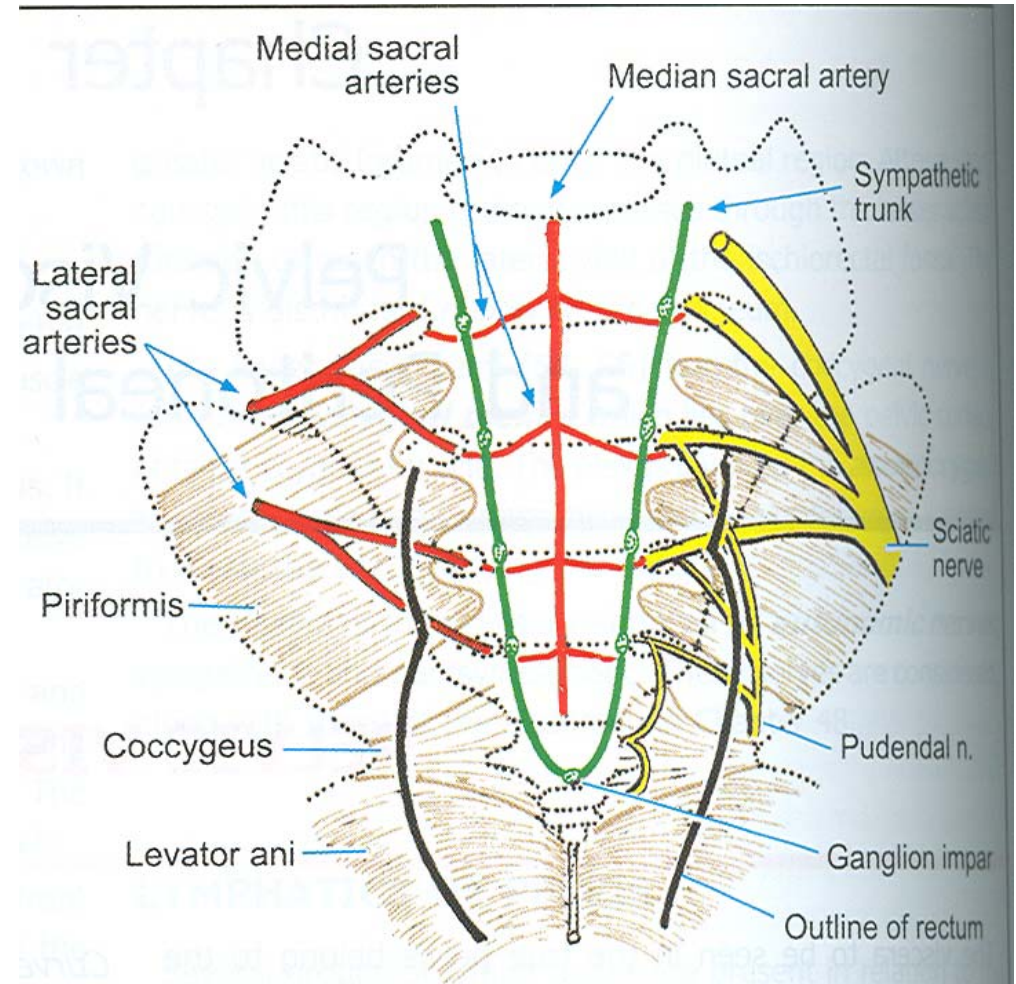
Females:

- Upper 2/3 – Recto uterine pouch
- Lower 1/3 – lower part vagina



Posteriorly

- Lower 3 pieces sacrum, coccyx
- Anococcygeal ligament
- Piriformis, Levator ani, Coccyges
- Median Sacral, superior rectal and lower lateral sacral vessels
- Sympathetic chain, ganglion impar
- Lymphatic, fat



INTERIOR

Empty: Temporary longitudinal folds

Commonly three folds

permanent semilunar or transverse folds

Superior fold – beginning of rectum

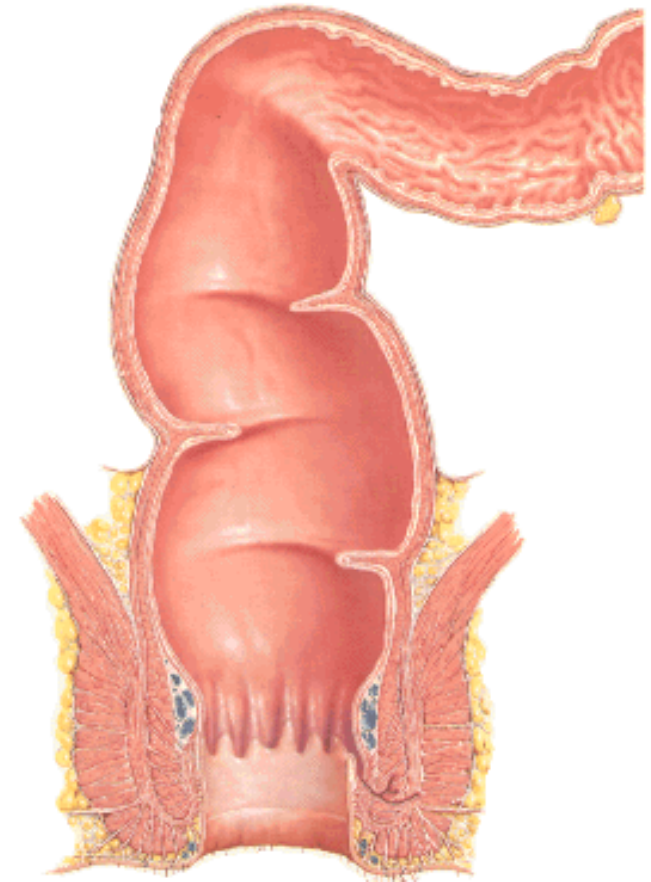
- Occasionally encircles

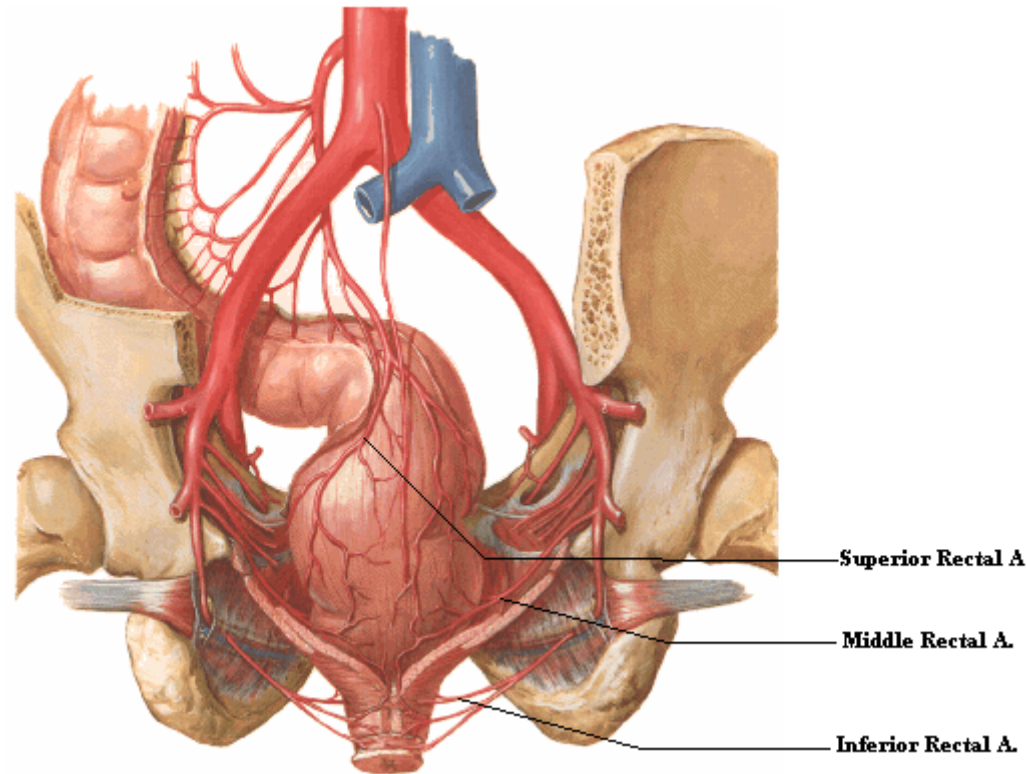
Middle fold – largest, most constant

immediately above rectal
ampulla

Inferior fold – 2.5 cm below middle fold

Fourth fold – sometimes, 2.5 cm above
middle fold





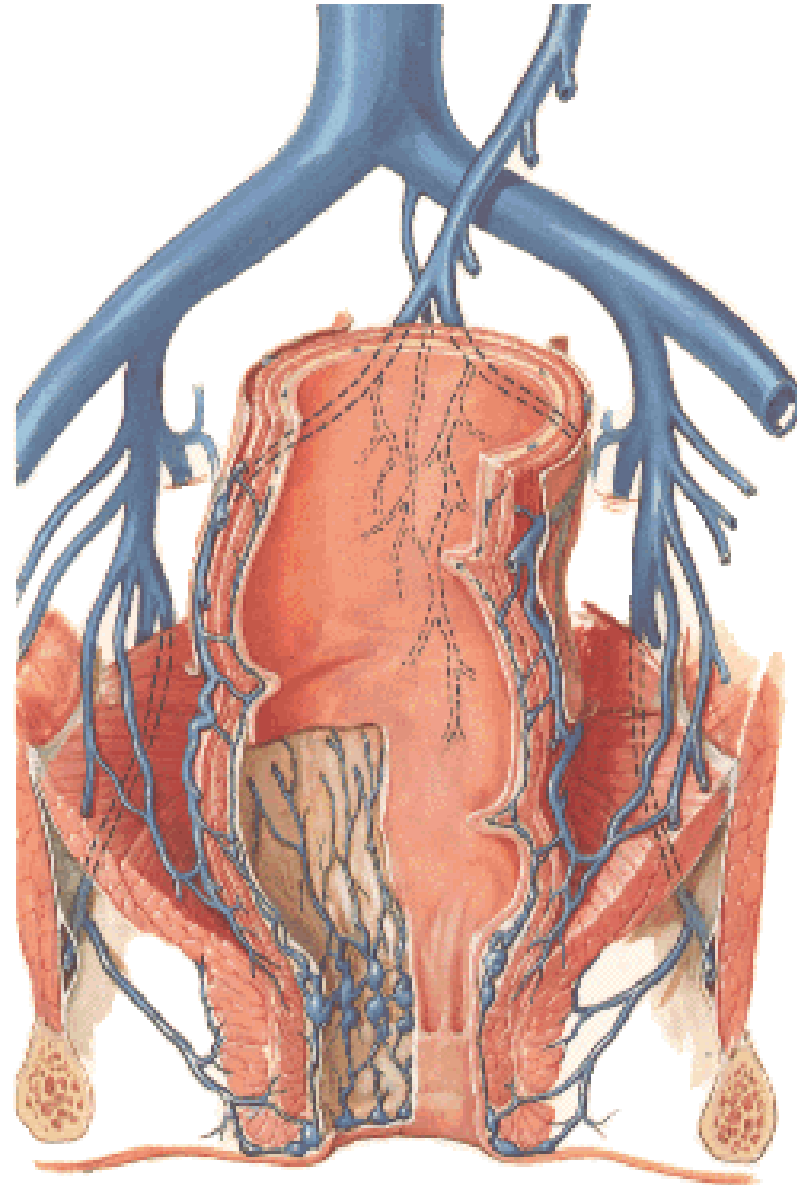
VASCULAR SUPPLY

Upper 2/3 – superior rectal artery

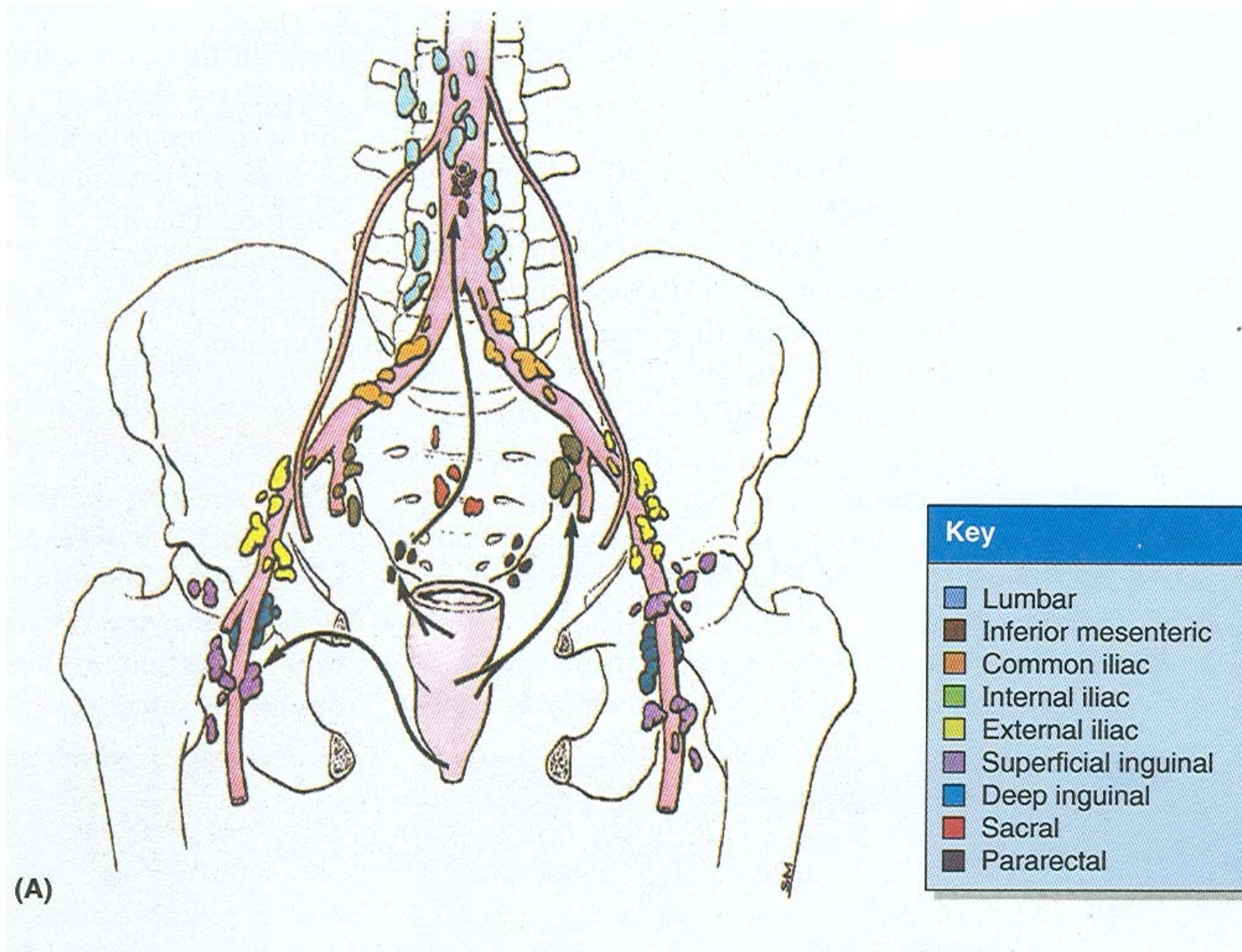
Middle 1/3 – Additionally middle rectal

Distal 1/3 – inferior rectal artery

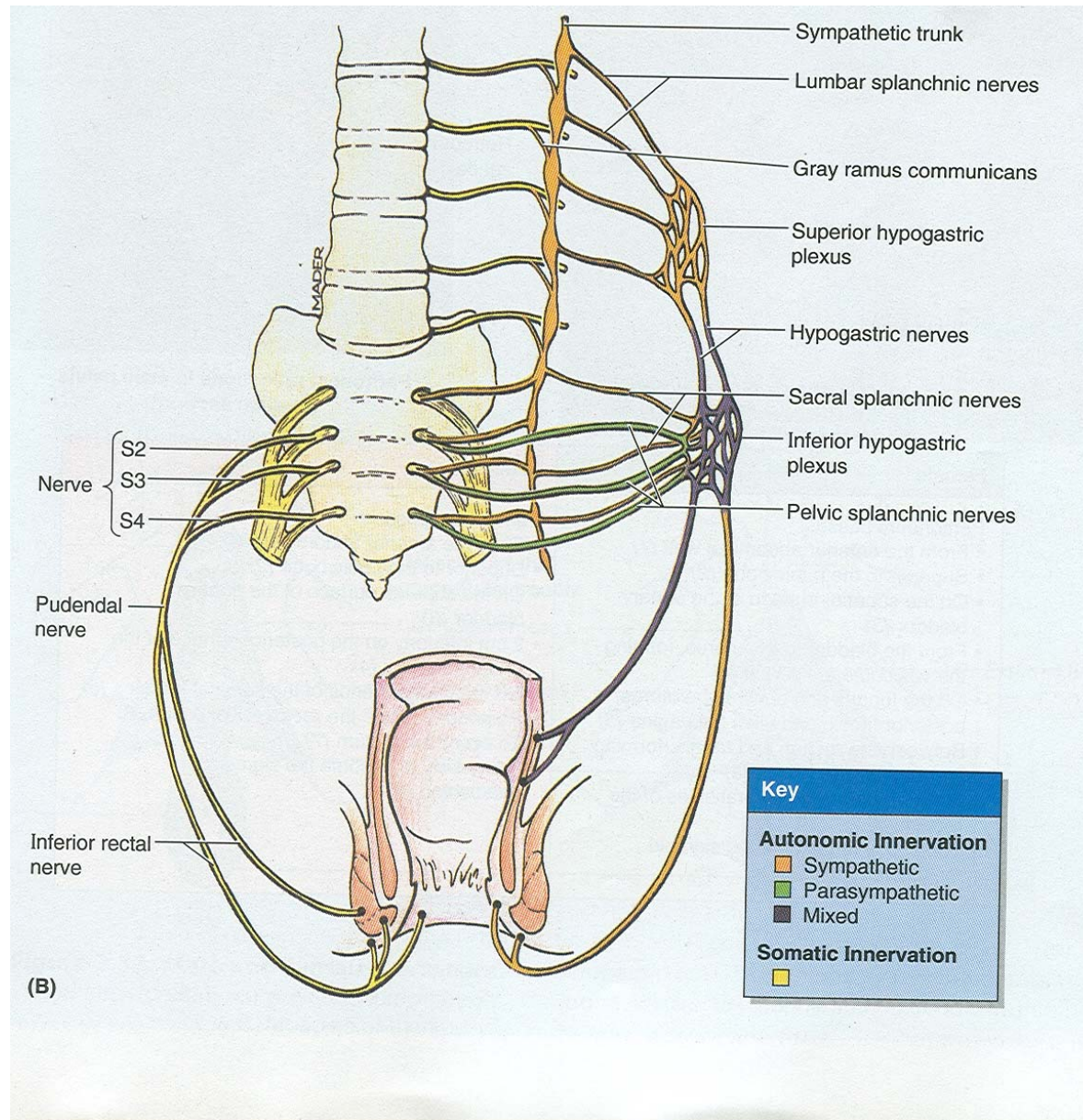
Venous drainage



LYMPHATIC DRAINAGE



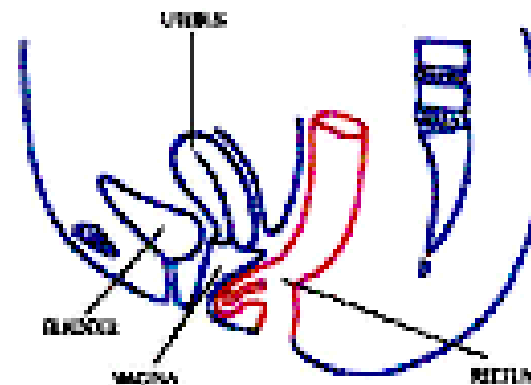
NERVE SUPPLY



APPLIED

Rectal Prolapse

Rectocoele



Rectocoele