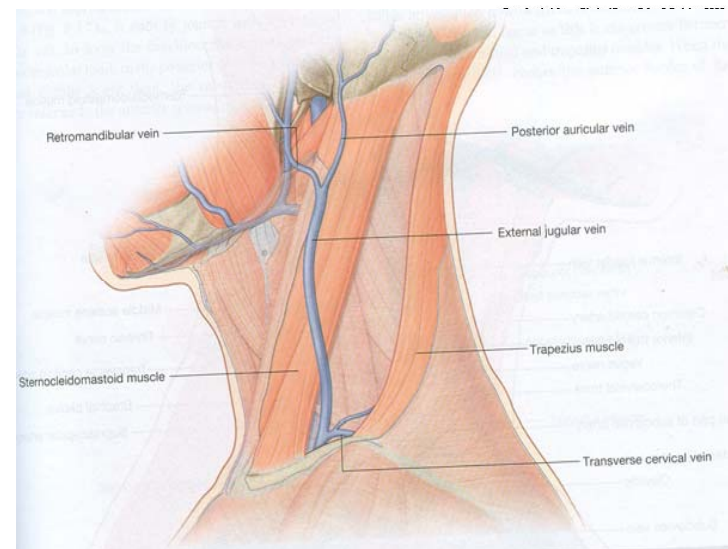
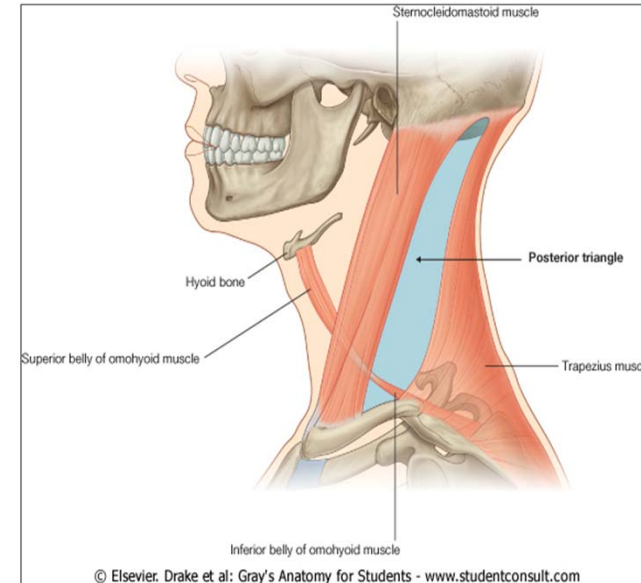


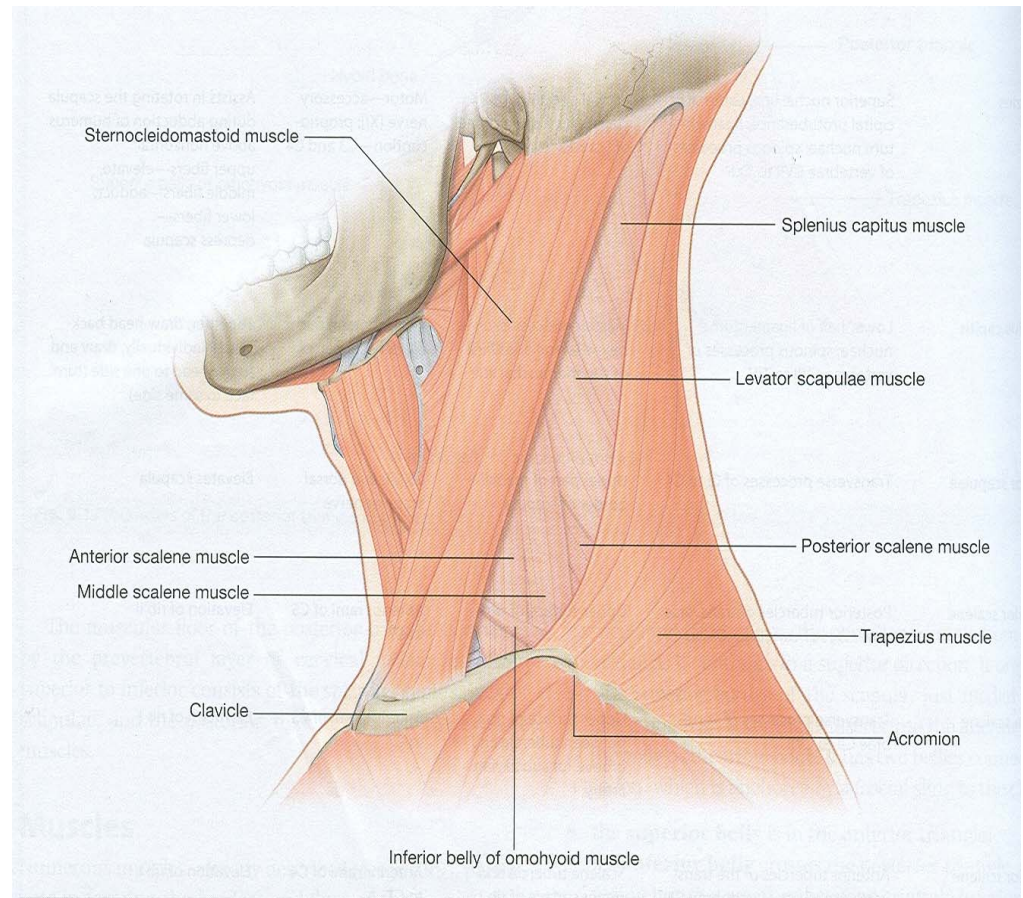
POSTERIOR TRIANGLE OF NECK

- Boundaries
 - Infront – posterior border of sternocleidomastoid muscle
 - Behind – anterior border of trapezius
 - Base – Superior surface of middle 1/3rd of clavical
 - Apex – Superior nuchal line where sternocleidomastoid and trapezius muscles meet
 - Roof – Skin, superfical fascia (platysma), investing layer of deep cervical fascia



SUBDIVISION OF POSTERIOR TRIANGLE

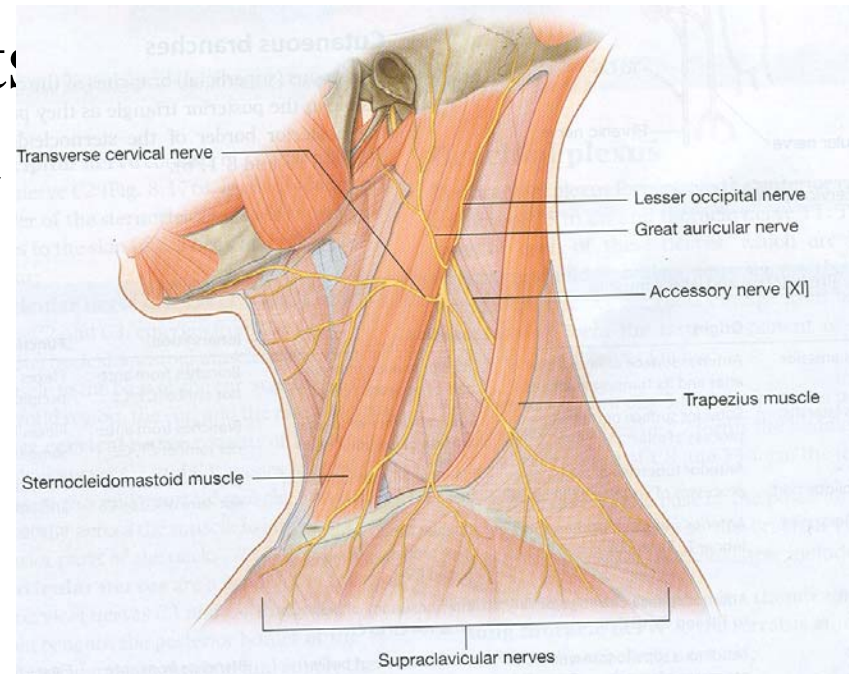
- Inferior belly of omohyoid muscle
 - Occipital triangle
 - Supraclavicular triangle
- Occipital triangle:
 - Boundaries
 - Floor
 - semispinalis capitis
 - Splenius capitis
 - Levator scapulae
 - S-medium and post



Occipital triangle

Contents:

- Spinal part of accessory nerve
- C3, C4
- Dorsal scapular nerve (C5)
- Four cutaneous branches
 - Lesser occipital nerve (C2)
 - Great auricular nerve (C2, C3)
 - Transverse cervical of neck (C2, C3)
 - Supraclavicular nerve (C3, C4)
- Upper trunk of brachial plexus
- Superficial cervical artery
- Occipital artery (occasional)

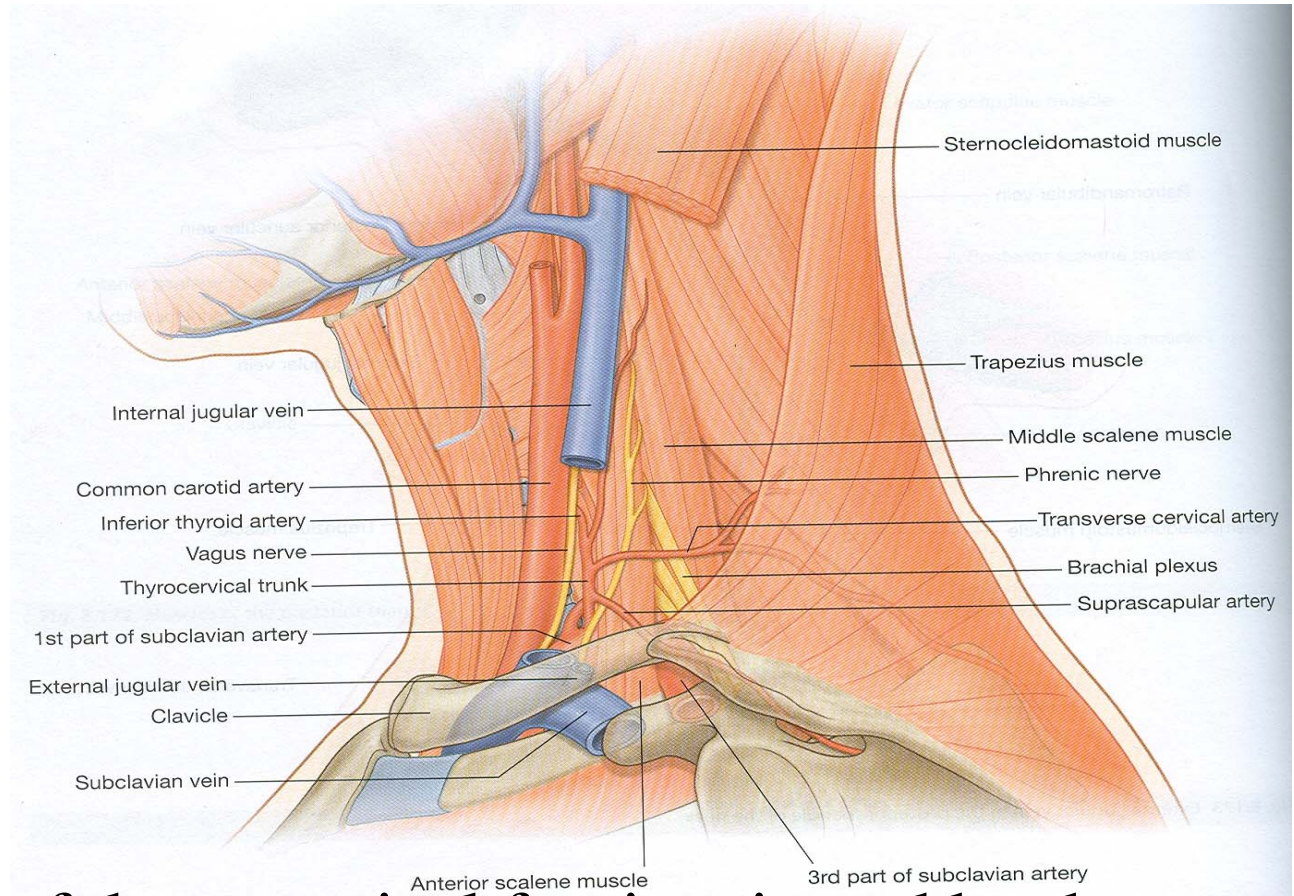


Muscle	Origin	Insertion	Innervation	Function
Sternocleidomastoid —Sternal head	Upper part of anterior surface of manubrium of sternum	Lateral one-half of superior nuchal line	Accessory nerve [XI] and branches from anterior rami of C2 to C3 (C4)	Individually—will tilt head towards shoulder on same side rotating head to turn face to opposite side; acting together, draw head forwards
—Clavicular head	Superior surface of medial one-third of clavicle	Lateral surface of mastoid process		
Trapezius	Superior nuchal line; external occipital protuberance; ligamentum nuchae; spinous processes of vertebrae CVII to TXII	Lateral one-third of clavicle; acromion; spine of scapula	Motor—accessory nerve [XI]; proprioception—C3 and C4	Assists in rotating the scapula during abduction of humerus above horizontal; upper fibers—elevate, middle fibers—adduct, lower fibers—depress scapula
Splenius capitis	Lower half of ligamentum nuchae; spinous processes of vertebrae CVII to TIV	Mastoid process, skull below lateral one-third of superior nuchal line	Posterior rami middle cervical nerves	Together, draw head backwards; individually, draw and rotate head to one side (turn face to same side)

Levator scapulae	Transverse processes of C1 to C4	Upper part of medial border of scapula	C3, C4; and dorsal scapular nerve (C4, C5)	Elevates scapula
Posterior scalene	Posterior tubercles of transverse processes of vertebrae C4 to C6	Upper surface of rib II	Anterior rami of C5 to C7	Elevation of rib II
Middle scalene	Transverse processes of vertebrae C2 to C7	Upper surface of rib I between tubercle and groove for subclavian artery	Anterior rami of C3 to C7	Elevation of rib I
Anterior scalene	Anterior tubercles of the transverse processes of vertebrae C3 to C6	Scalene tubercle and upper surface of rib I	Anterior rami of C4 to C7	Elevation of rib I
Omohyoid	Superior border of scapula medial to scapular notch	Inferior border of body of hyoid bone	Ansa cervicalis; anterior rami of C1 to C3	Depress the hyoid bone

SUPRACLAVICULAR TRIANGLE (SUBCLAVIAN TRIANGLE)

- Boundaries
- Roof :
 - Skin
 - S/F (platysma)



- investing layer of deep cervical fascia, pierced by three diverging branches of supraclavicular nerve and external jugular vein

- Floor

- Outer border of 1st rib
- S. medius (near insertion)
- 1st digitation of serratus anterior

Usually serratus anterior overlapped by sternocleidomastoid muscle

- Contents

- Third part of subclavian artery
- Subclavian vein
- Terminal part of external jugular vein
- Trunk of brachial plexus
 - Dorsal scapular nerve (C5)
 - Long thoracic nerve (C5-C7)
 - Nerve to subclavius (C5)
 - Supraclavicular nerve (C3, C4)
- Superficial cervical, suprascapular, dorsal scapular arteries
- Posterior inferior group of deep cervical lymph nodes

Cervical Plexus in Situ

