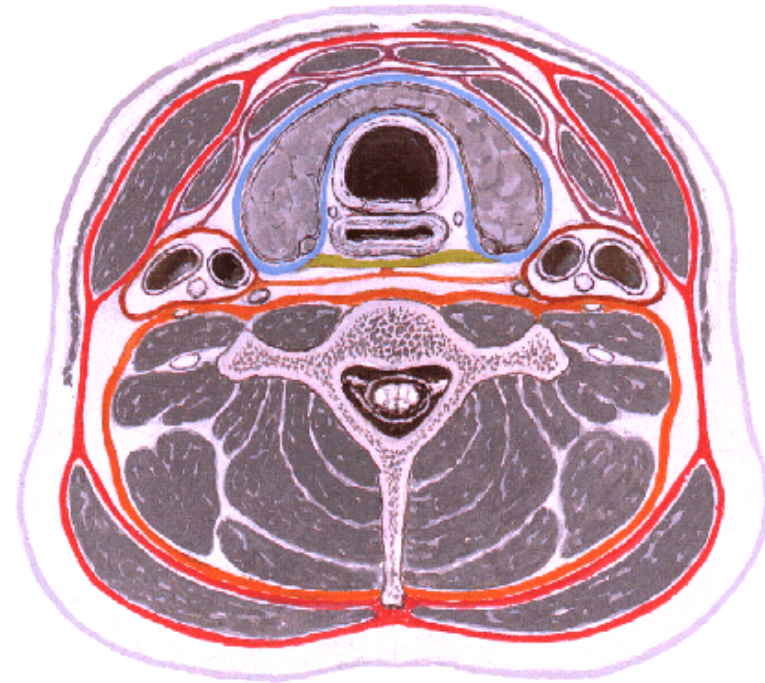


# DEEP CERVICAL FASCIA

- Invests & fills up the gap
- **Three layers**
  - Investing
  - Pretracheal
    - Visceral co.
  - Prevertebral

Carotid sheath

Fascial Layers of Neck  
Cross Section

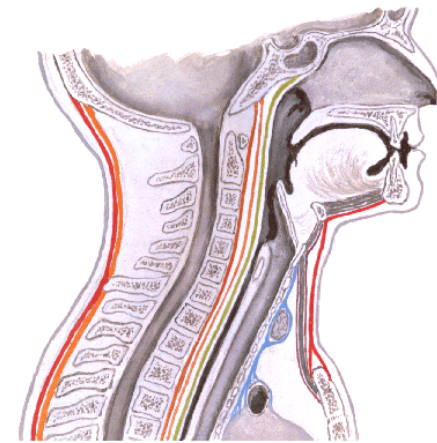


# INVESTING LAYER OF DEEP CERVICAL FASCIA

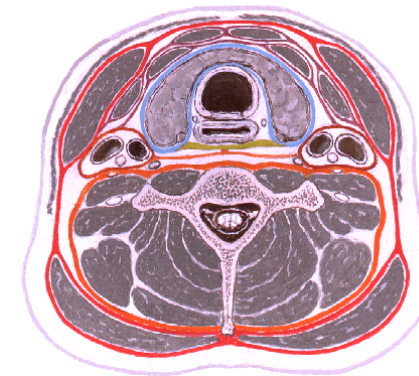
## Attachments

- Vertical
- post.-lig. Nuchae, cer. spine
- Ant. – cont. with other side
- attached to hyoid
- Horizontal
- Above-ext. occ. pro.-symp. Menti
- Below-spine& acromian pro. of scapula, upp. sur. of clavicle, supra sternal notch

Fascial Layers of Neck  
Sagittal Section



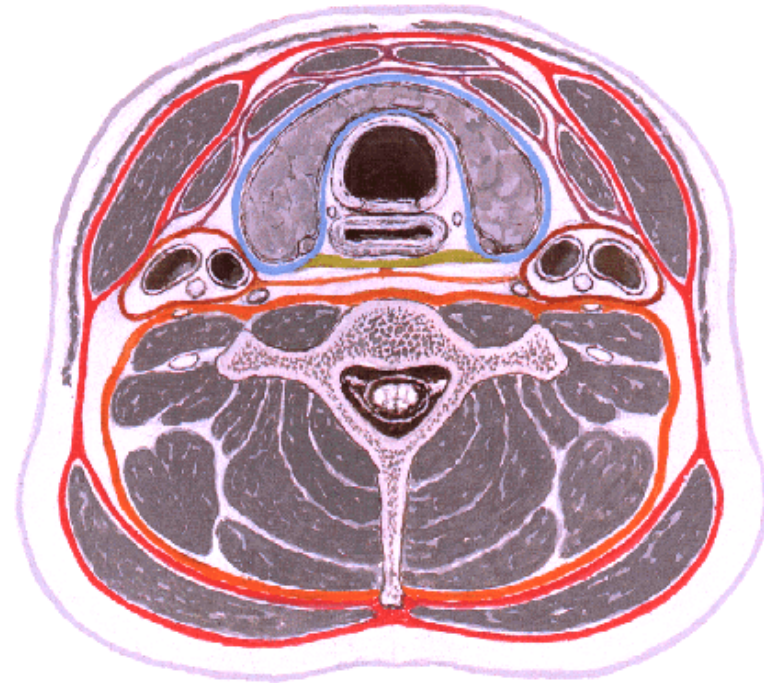
Fascial Layers of Neck  
Cross Section



# INVESTING LAYER OF DEEP CERVICAL FASCIA

- **TRACINGS**
- **Horizontal extent-**
  - trapezius, sternocleidomastoid
- **Vertical extent-**
  - Above- submandibular & parotid glands
  - Below- suprasternal & supraclavicular spaces

Fascial Layers of Neck  
Cross Section



- **Horizontal extent**

Arising from fascia under cover of stcd muscle> ant. Wall carotid sheath> splits to enclose thyroid & in front of trachea

Lig. Of berry- bet. thyroid lob& cricoid cartilage

Thyroid fascia (post. Sur) illdefined, Enlargment > dysphagia

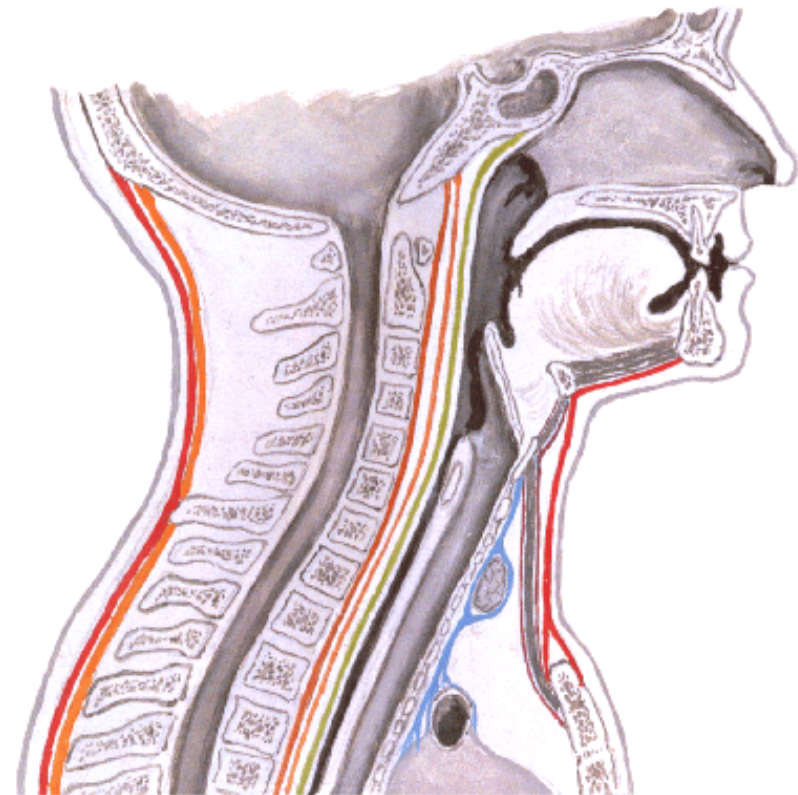
**Vertical extent**

Above -Hyoid in mid line > oblique line of thyroid car.(thy. Moves up & down during deglutition

Below- blends with apex of fibrous pericardium also cont. with supra pleural membrane

# PRETRACHEAL FASCIA

**Fascial Layers of Neck**  
Sagittal Section





## Horizontal extent

- forming post. wall of carotid sheath, covers cerv. vertebrae & prevertebral muscles (post. triangle of neck)
- 4 s/f br. of cerv. & br. Plexus pierces before they become cutaneous
- axillary sheath between sca & scm

## Vertical extent

**Above-** base of skull

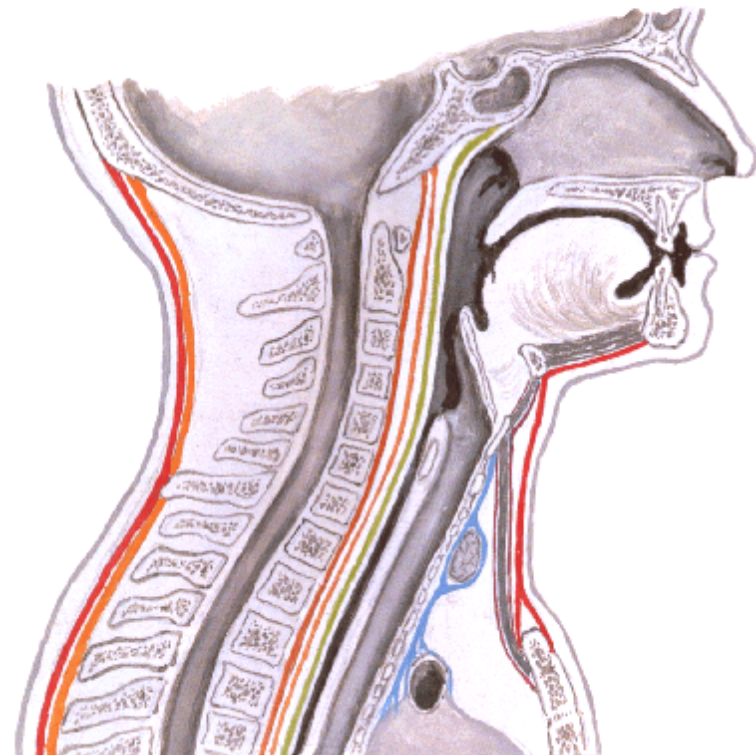
**Below-** fascia splits

ant-. alar fascia blends with buccopharyngeal fascia

post – enters thorax & blends with ant. long. lig. opp. upp. 3 thoracic vertebrae

# PREVERTEBRAL FASCIA

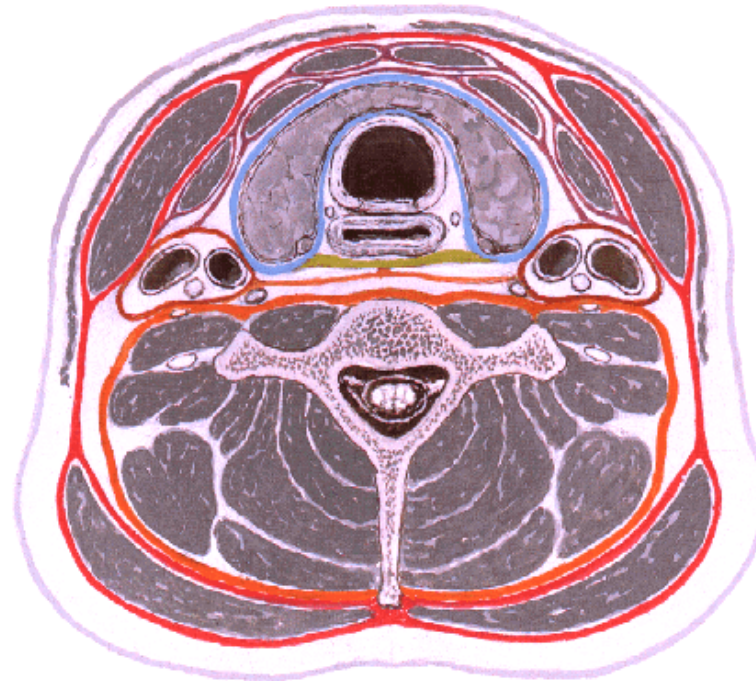
Fascial Layers of Neck  
Sagittal Section



# CAROTID SHEATH

- Envelops neurovascular bundle-CCA, ICA IJV,X
- **Ant. Wall-** attached to fascia under cover of sternocleidomastoid muscle, embedded in it is ansa cervicalis (pretracheal)
- **post. Wall** – loose areolar tissue separate prevertebral fascia ( prevertebral )
- **Str. Piercing the carotid sheath-** ECA, tri. Of IJV,IX, XI, XII, Cerv. Br. Of X
- **Applied-** exposed in block dissection of neck

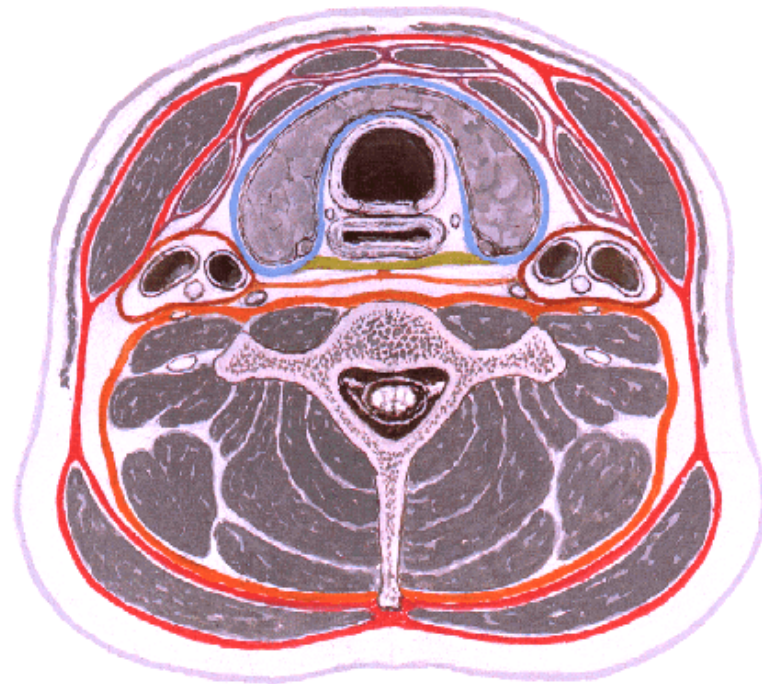
Fascial Layers of Neck  
Cross Section



# RETROPHARYNGEAL SPACE

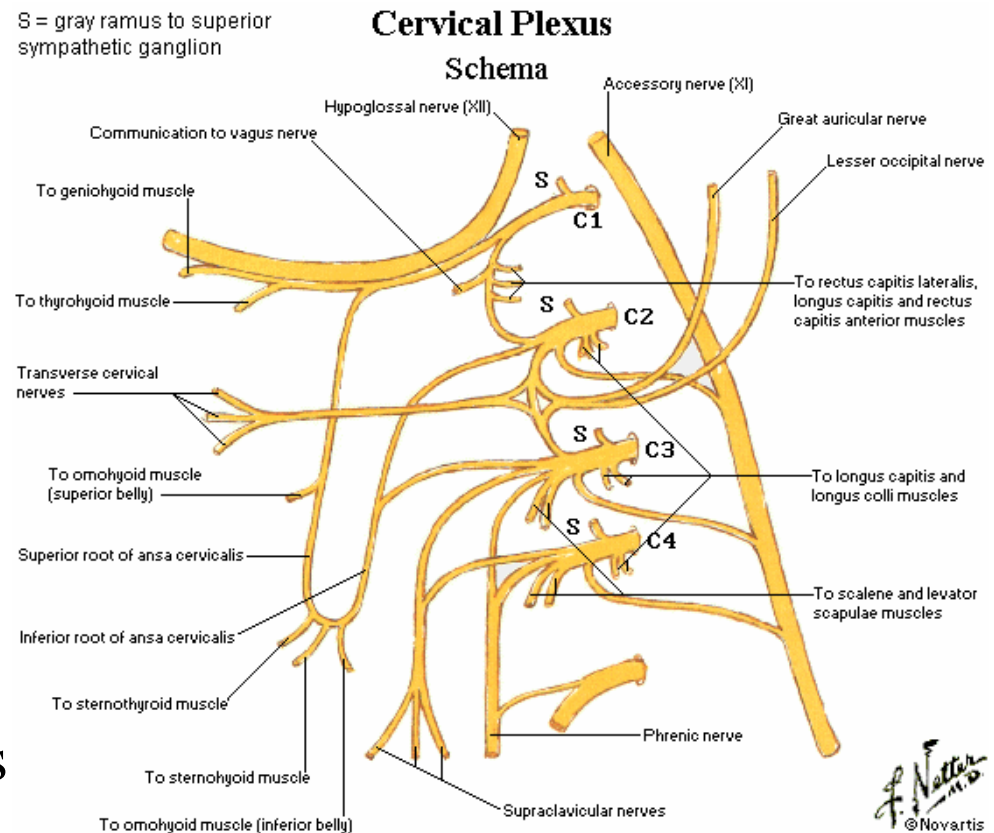
- Potential/dead space behind pharynx acts as bursae, allow expansion of pharynx
- Boundaries
- Contents
  - Retro LN and loose areolar tissue
  - Pharyngeal plexus of nerves and vessels

Fascial Layers of Neck  
Cross Section



# CERVICAL PLEXUS

- Supplies – skin and muscles of neck, diaphragm
- Loops beneath prevertebral fascia
- On S med, L scapulae under cover of sternocleidomastoid muscle
- Actually not lies in posterior triangle
- VPR of C1-4 in series with brachial plexus
- Each formation ramus divides into upper and lower branch except C1





# CERVICAL PLEXUS

## BRANCHES

- S/F cutaneous three ascending
  - Lesser occipital (C2)
  - Great auricular (C2, 3)
  - Transverse cervical nerve (C2, 3)
- Descending branch
  - Supraclavicular nerve (C3, 4)
- Deep branches
  - Muscular and divide into medial and lateral series
  - Medial : RCL, C1; RCA –C1, 2; Longus Capitis – C1- C4; Longus colli – C2-C4; inferior root of ansa cervicalis – C2,3; phrenic Nerve – C3, 4, 5
  - Lateral : Sternocleidomastoid – C2; Trapezius – C3,4; L scapulae- C3, 4; S.M. – C3, 4
- Communicating branches
  - Sympathetic – Gray rami (superior cervical ganglion)
  - With 12<sup>th</sup> cranial nerve

