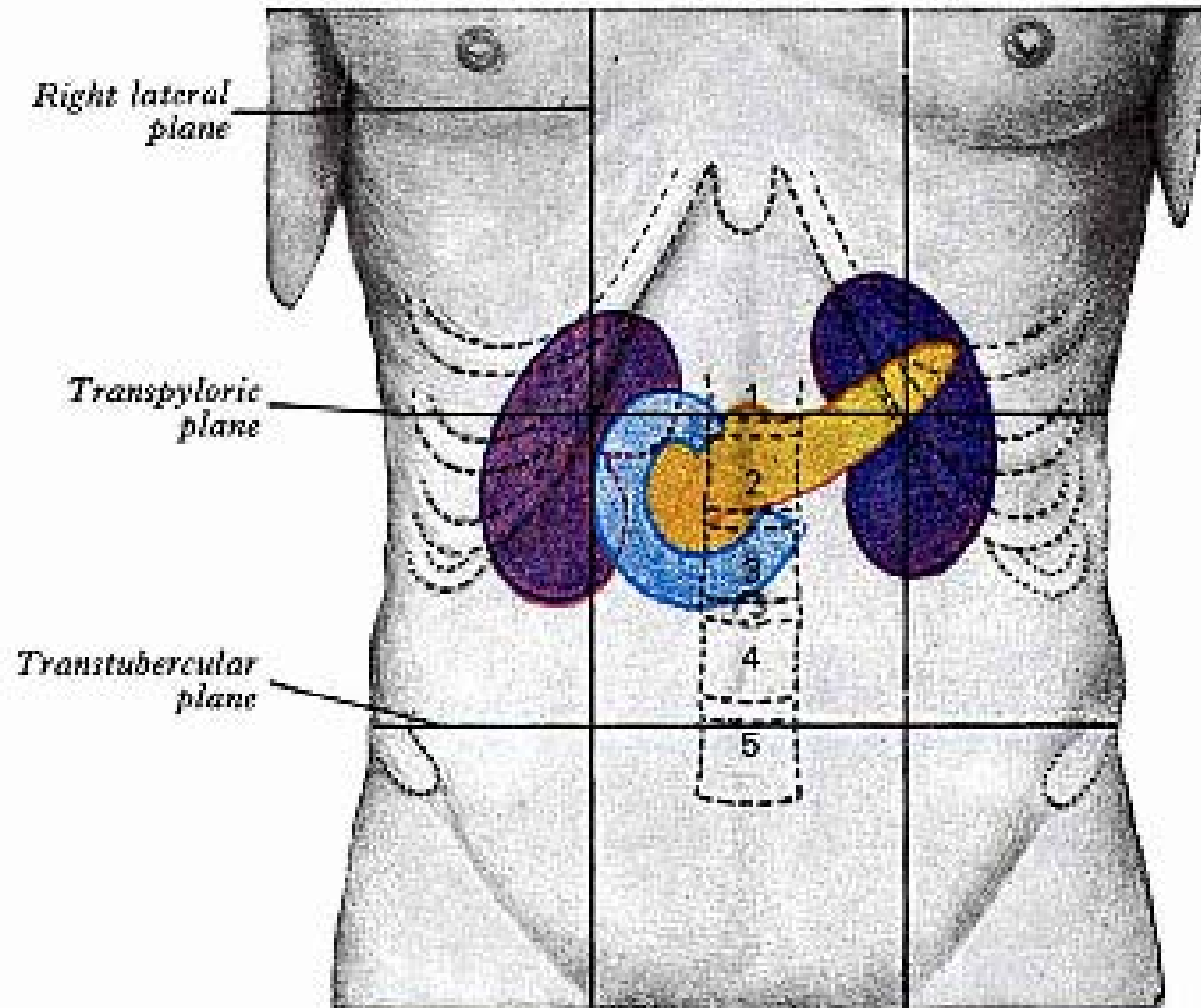
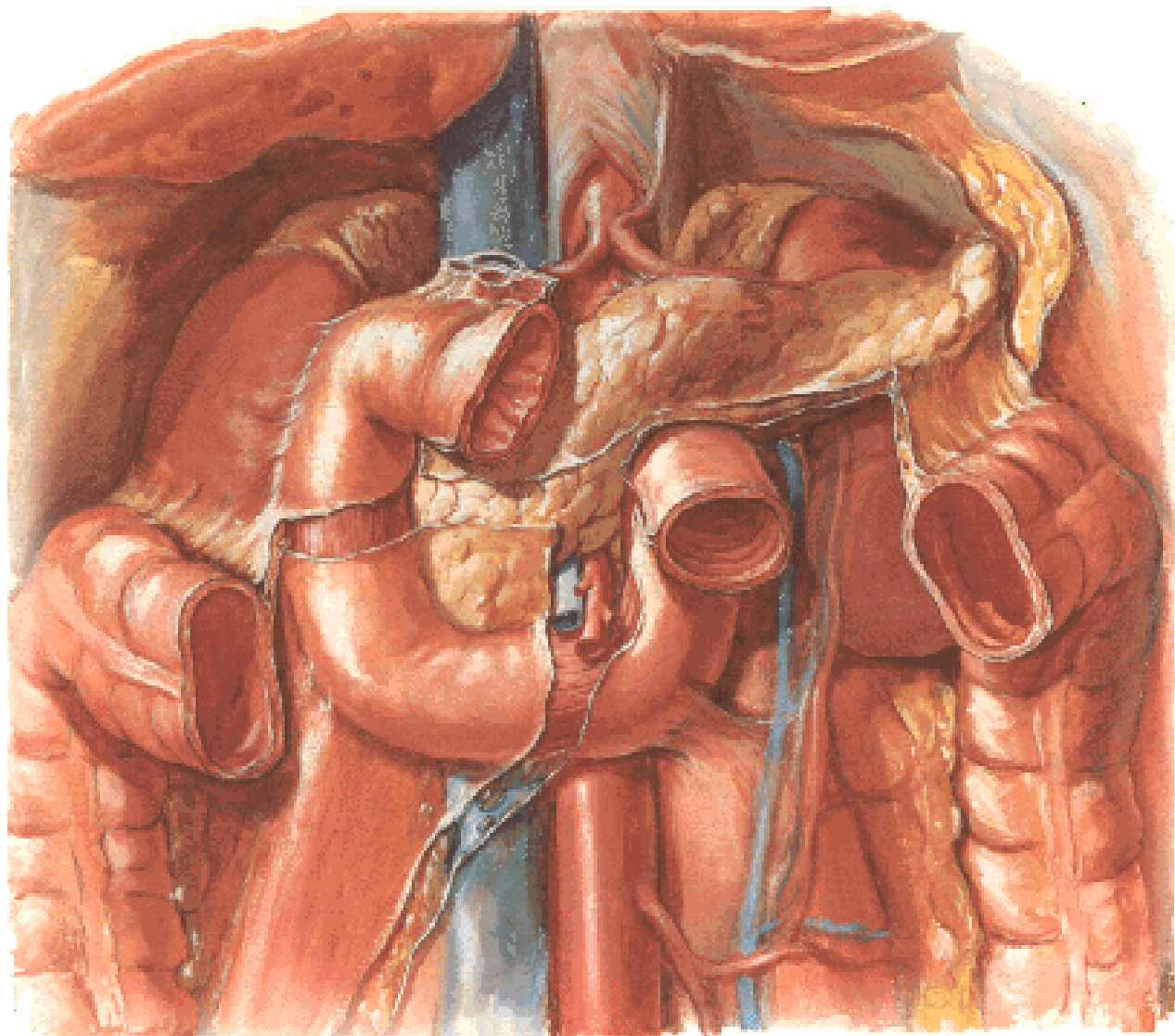


# DUODENUM



## Duodenum in Situ



## RELATIONS

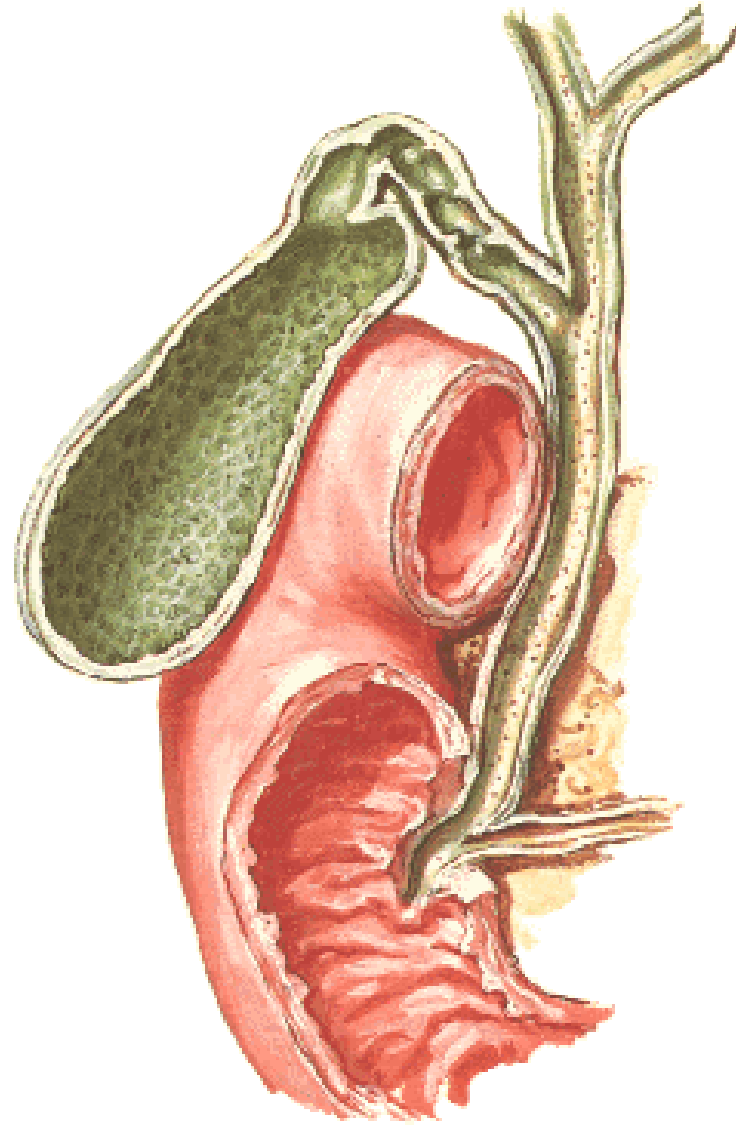
### FIRST PART

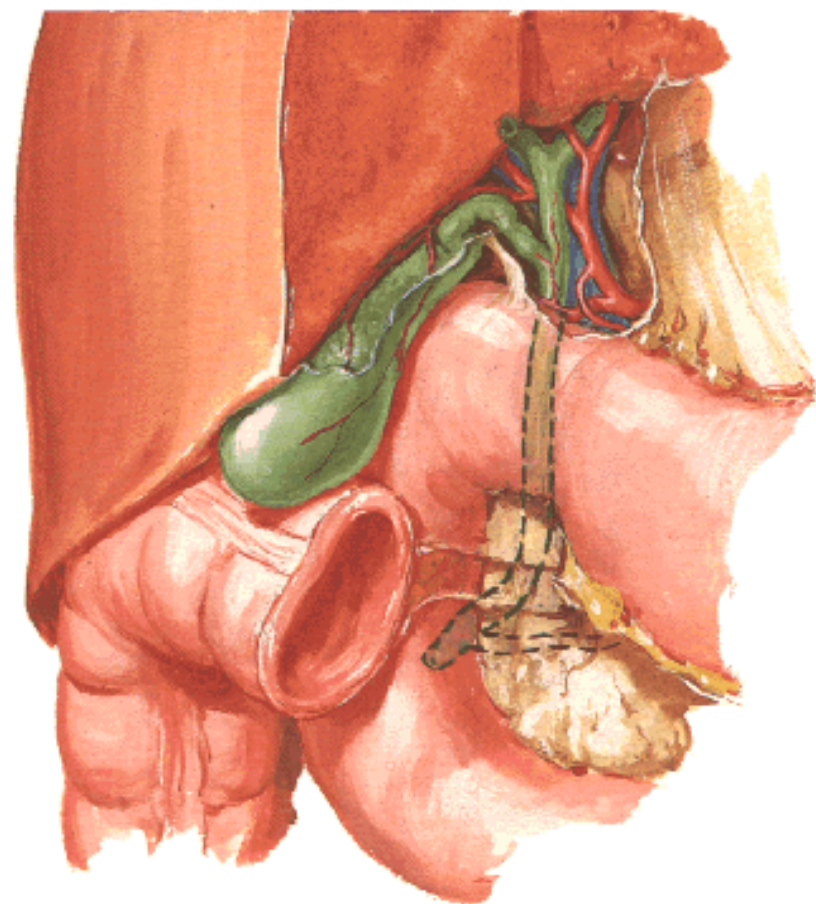
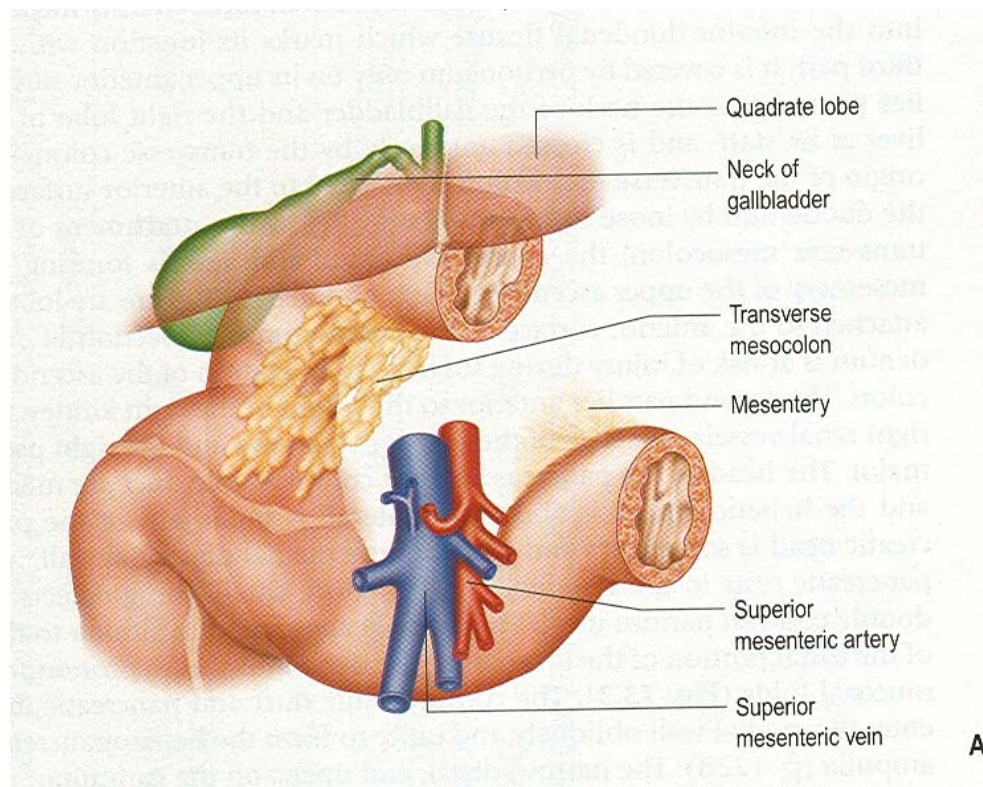
**Anterior –** Quadrate lobe of the liver

**Posterior –** Portal vein, gastroduodenal artery, and bile-duct.  
The vena cava is behind these.

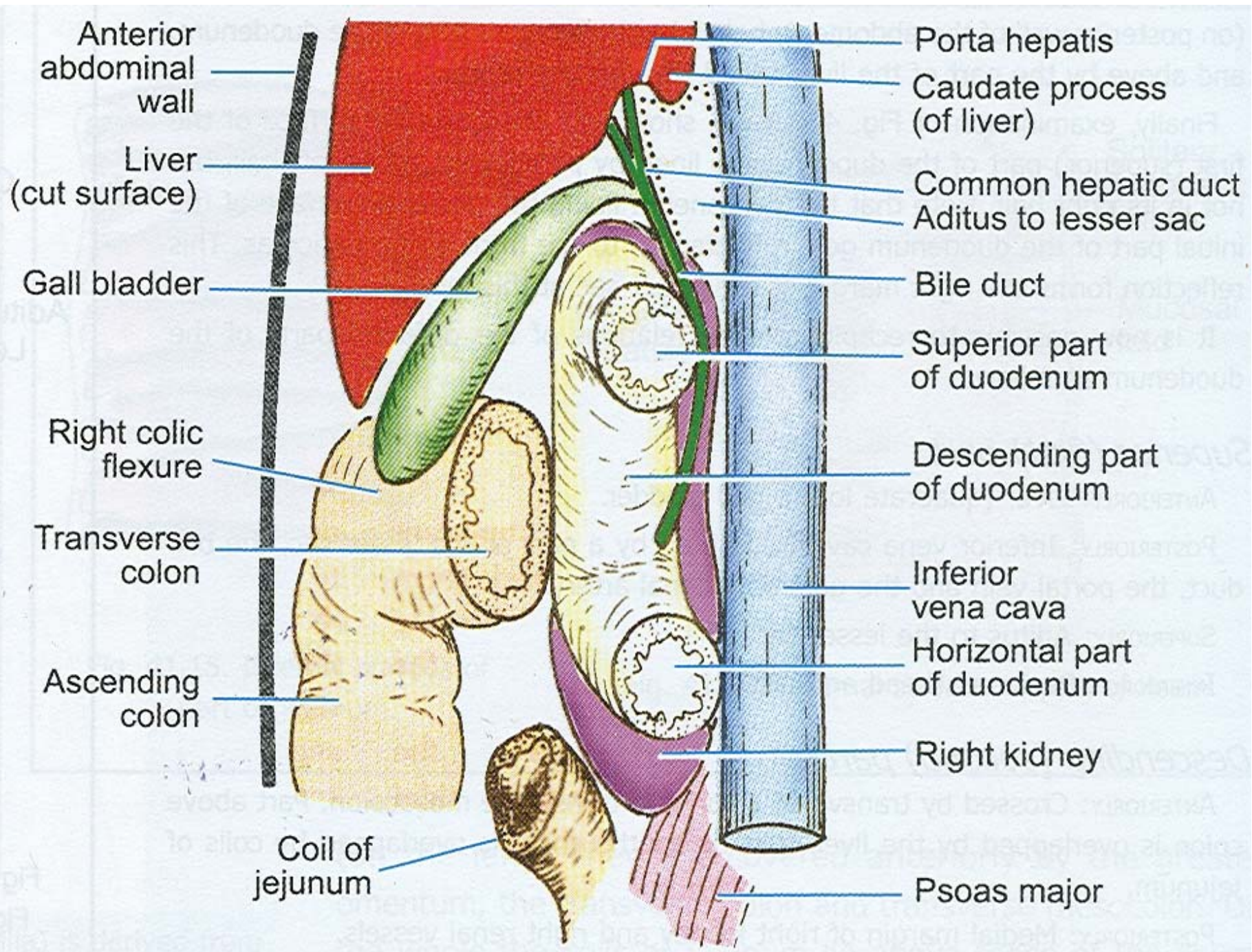
**Superior -** Epiploic foramen and hepatic artery (horizontal part)

**Inferior -** Head of the pancreas











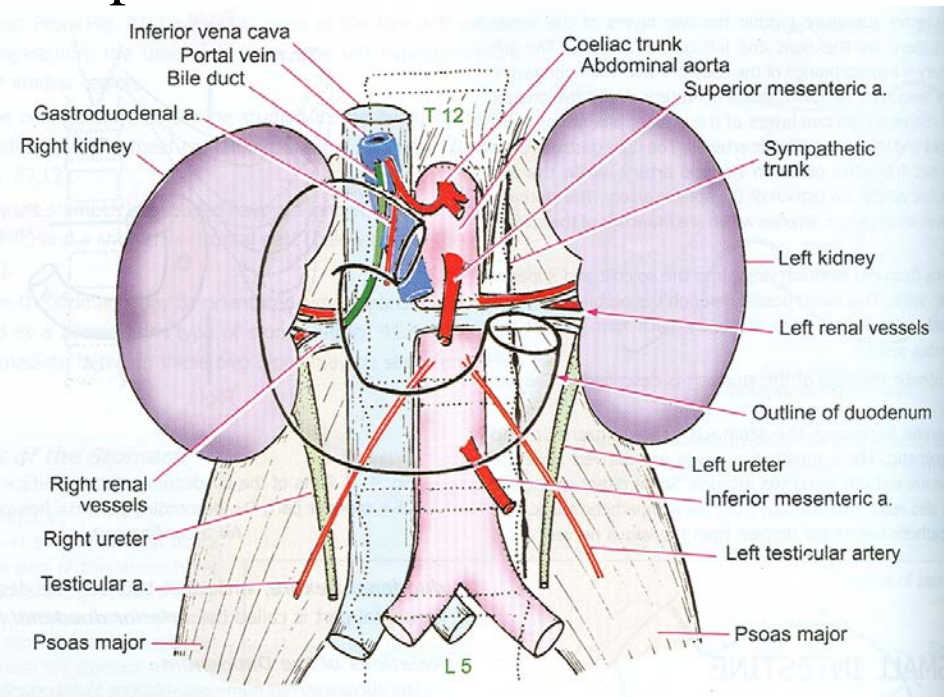
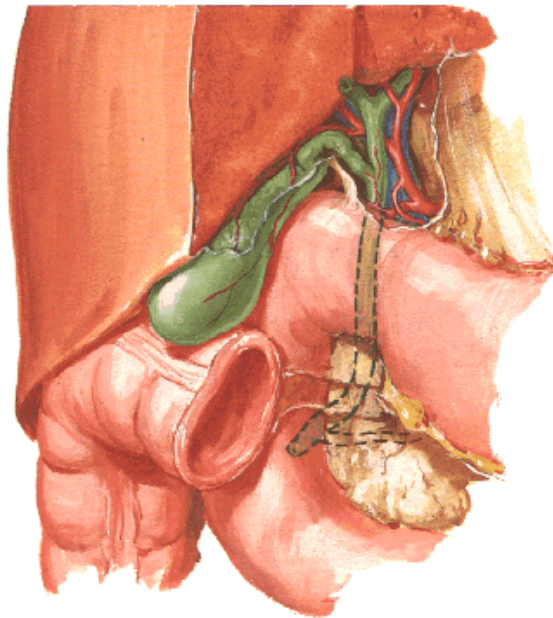
## SECOND PART

**Anterior -** Gall-bladder, transverse colon, and small gut

**Posterior -** Rt. Renal vessels, the pelvis and surrounding areas of the rt.kidney

**Right -** Hepatic flexure of the colon

**Left -** Head of the pancreas. It is pierced about the middle by the bile and pancreatic ducts.



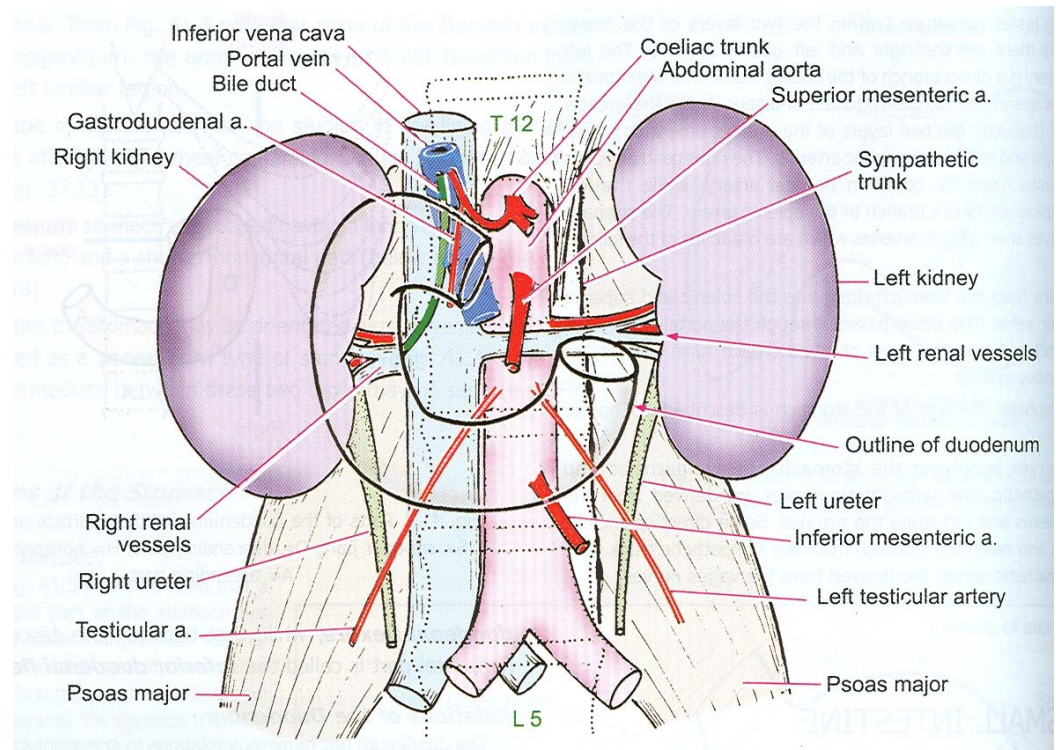
## THIRD PART

**Anterior -** Superior mesenteric vessels, the root of the mesentery, the transverse colon and mesocolon

**Posterior -** Inferior vena cava, aorta, gonadal vessels of both sides, the left sympathetic trunk, and the left psoas

**Superior -** Head of the pancreas

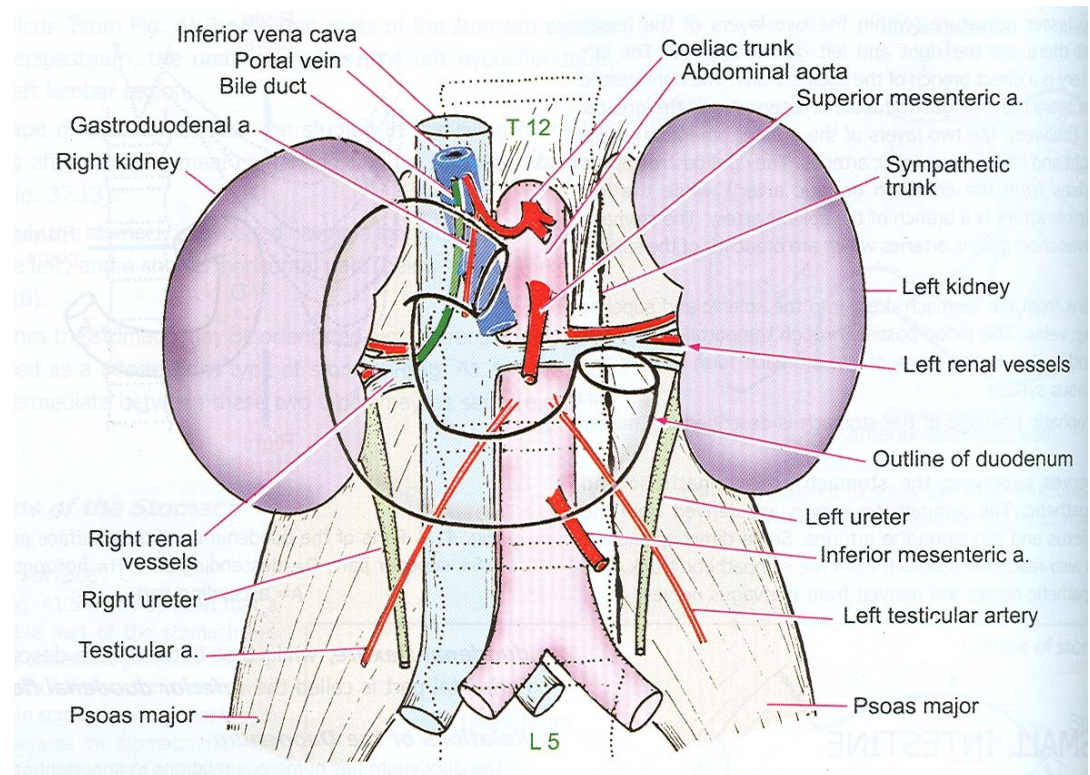
**Inferior -** Small gut



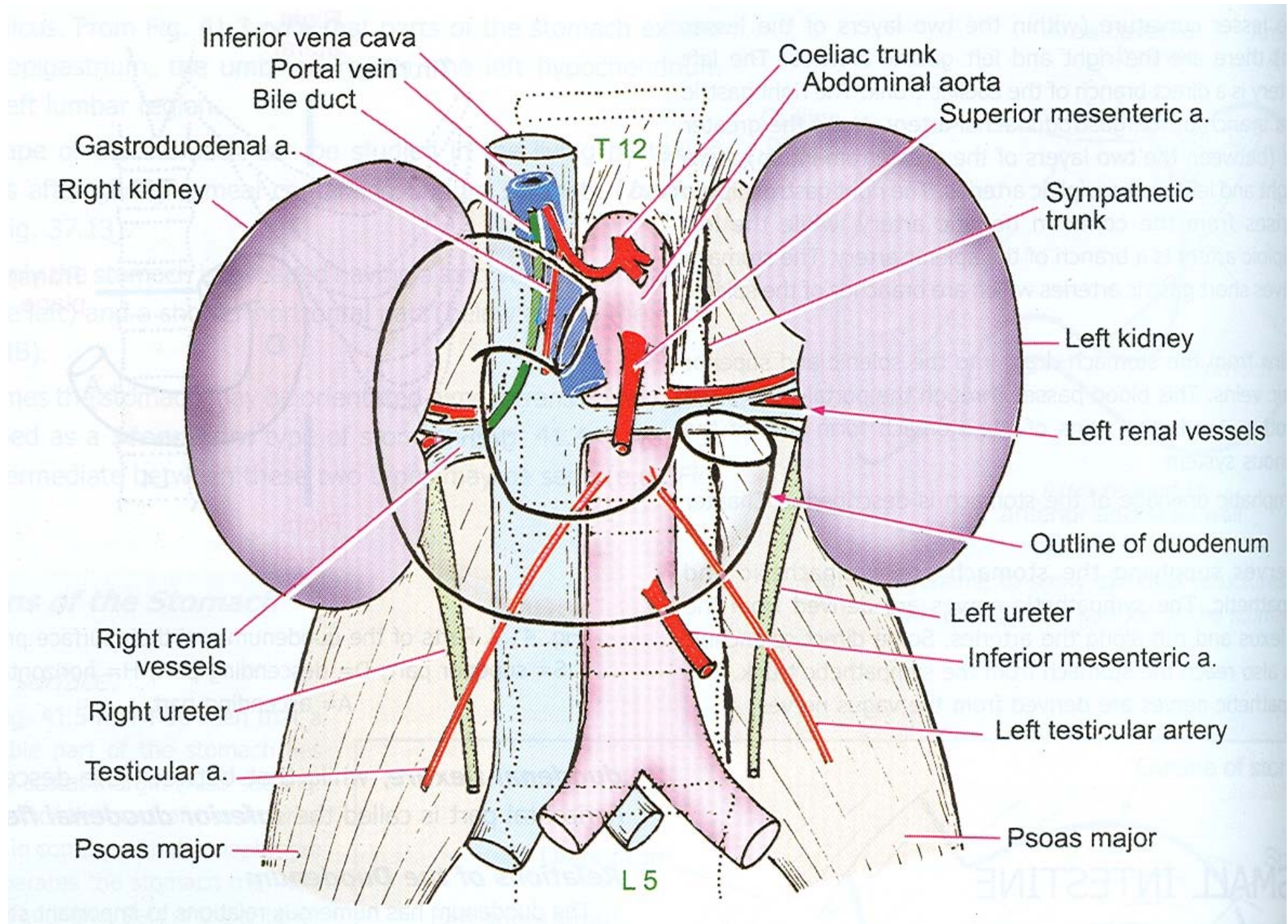


## FOURTH PART

- Anterior-** Transverse mesocolon, and transverse colon
- Posterior -** Left psoas major, left sympathetic trunk, left renal and testicular vessels and inferior mesenteric artery
- Superior -** Pancreas
- Inferior -** Jejunum
- Right -** Aorta
- Left -** Left Kidney  
and ureter

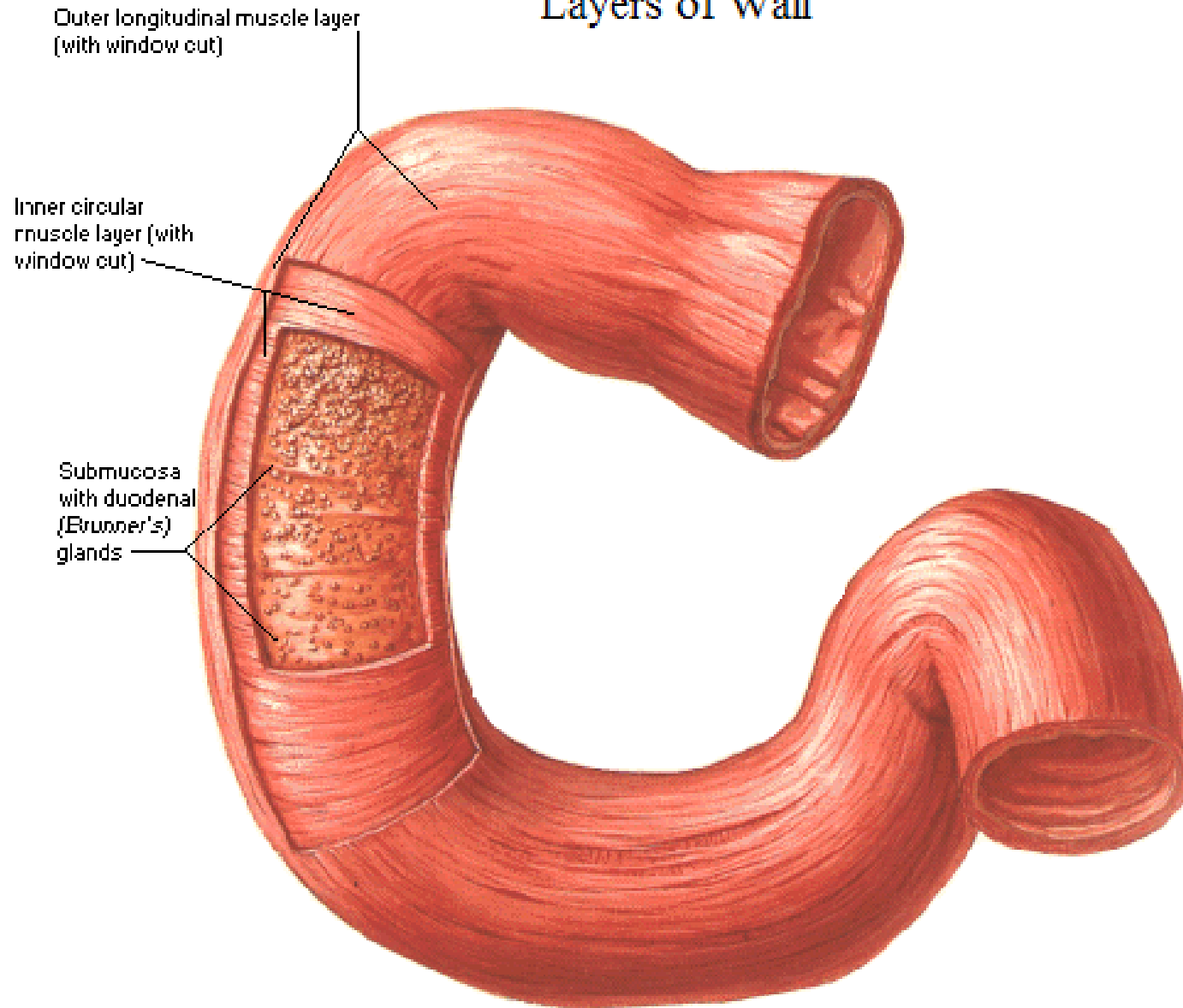






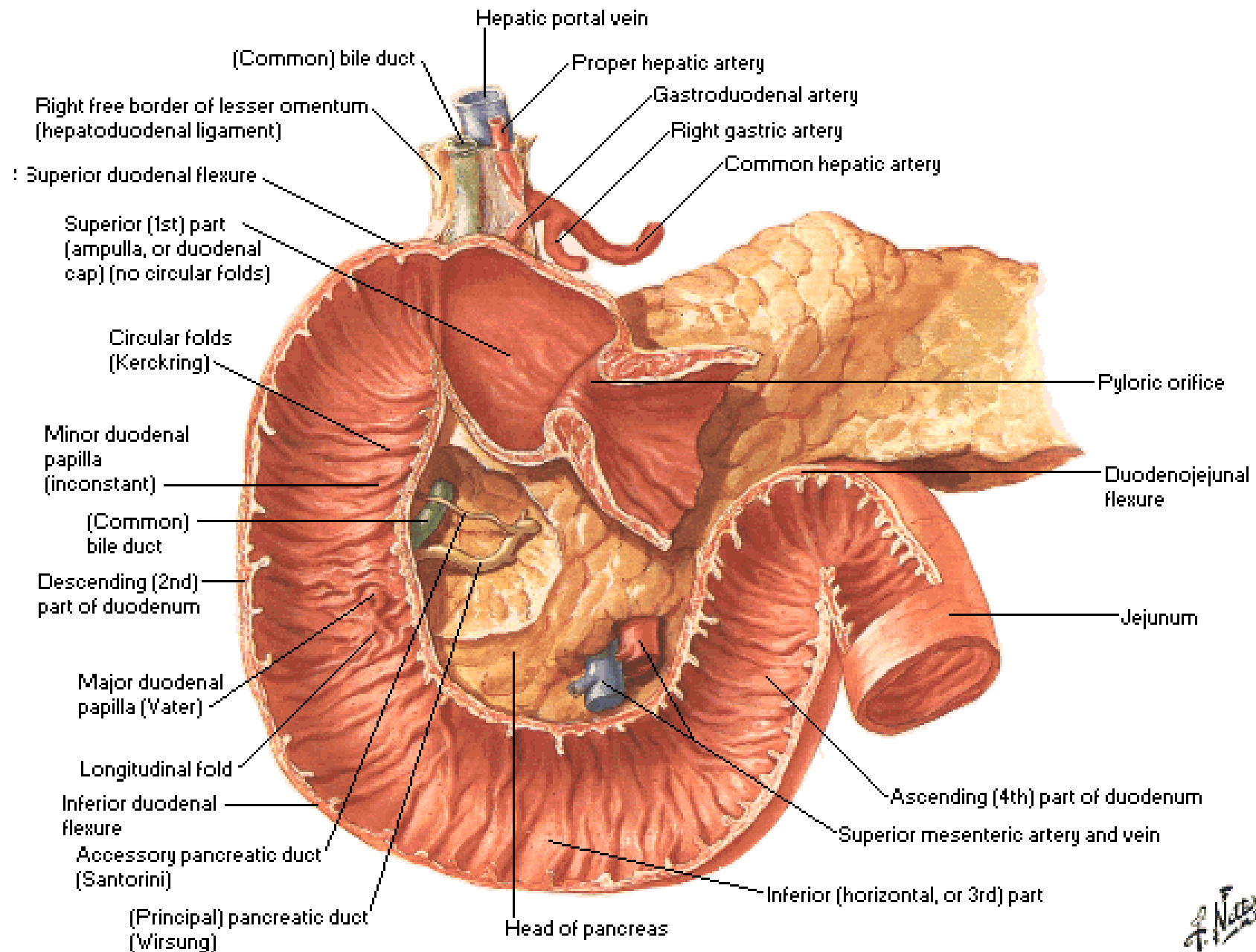
# Musculature of Duodenum

## Layers of Wall

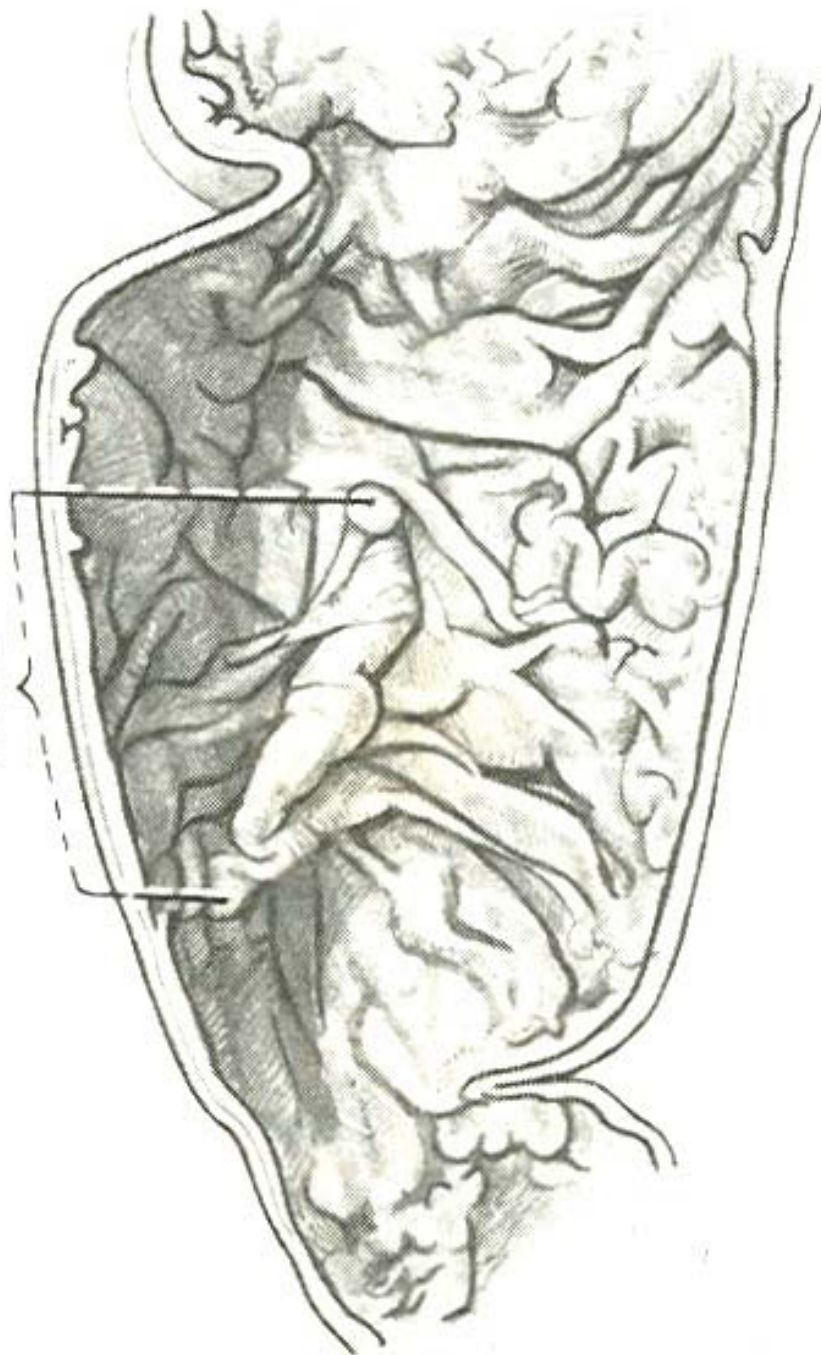




# Mucosa of Duodenum



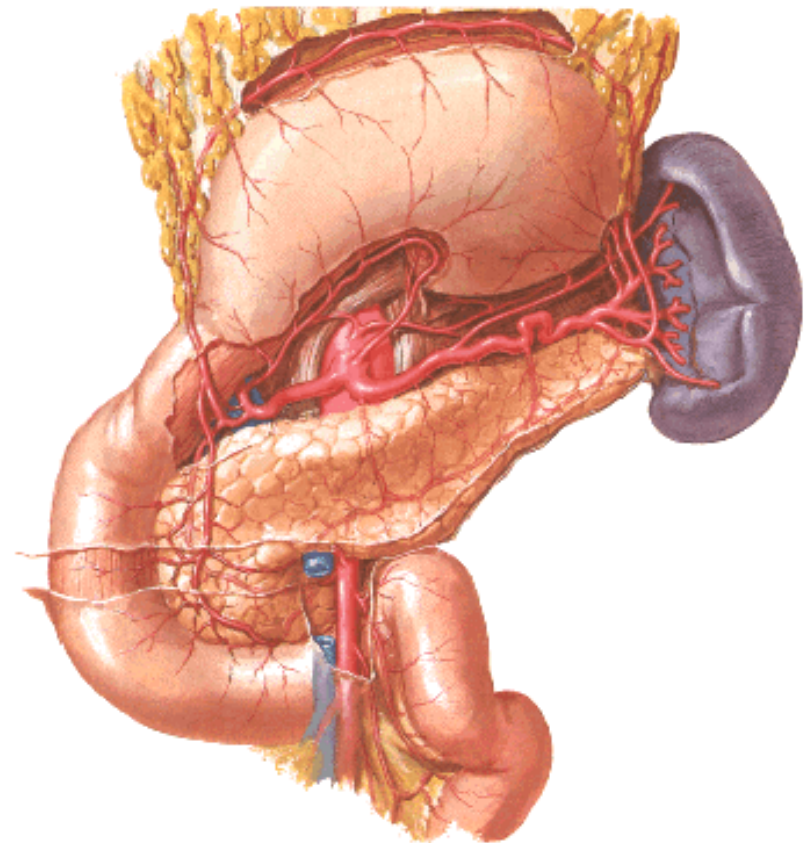
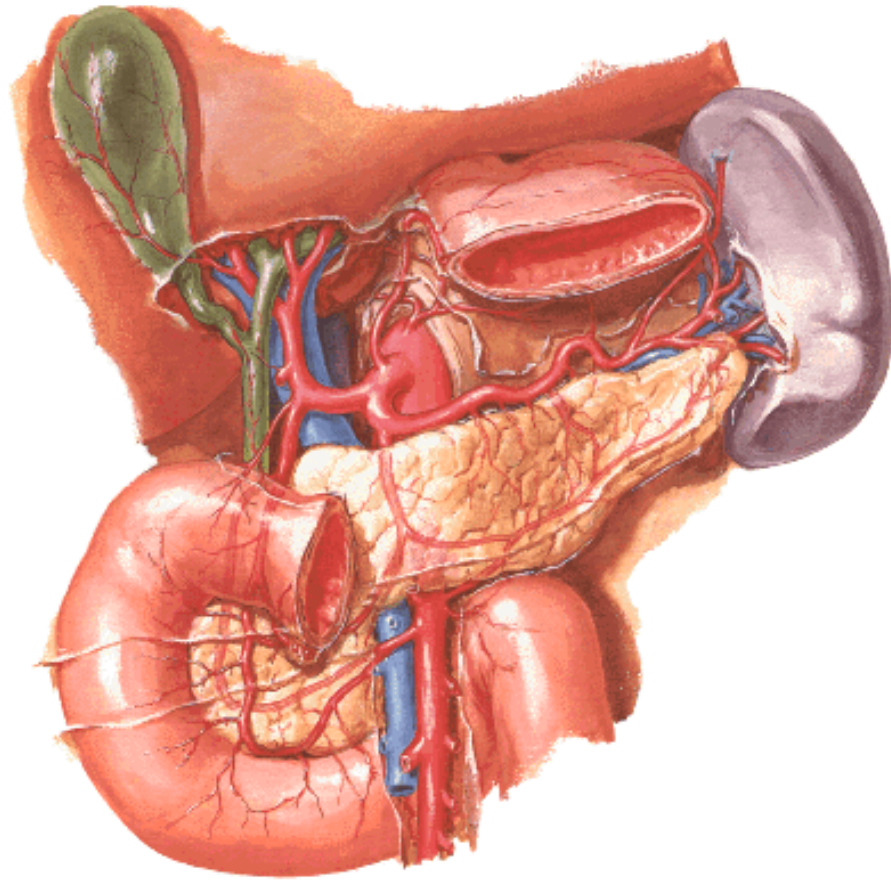
Greater duodenal  
papilla and  
longitudinal fold



# ARTERIAL SUPPLY

- Derived from coeliac trunk:  
Superior pancreaticoduodenal (branch of gastroduodenal which in turn is a branch of hepatic artery)
- Derived from Superior mesenteric artery:  
Inferior pancreaticoduodenal
- Additional supply from:  
Supraduodenal/ Right gastric/ Right gastroepiploic arteries

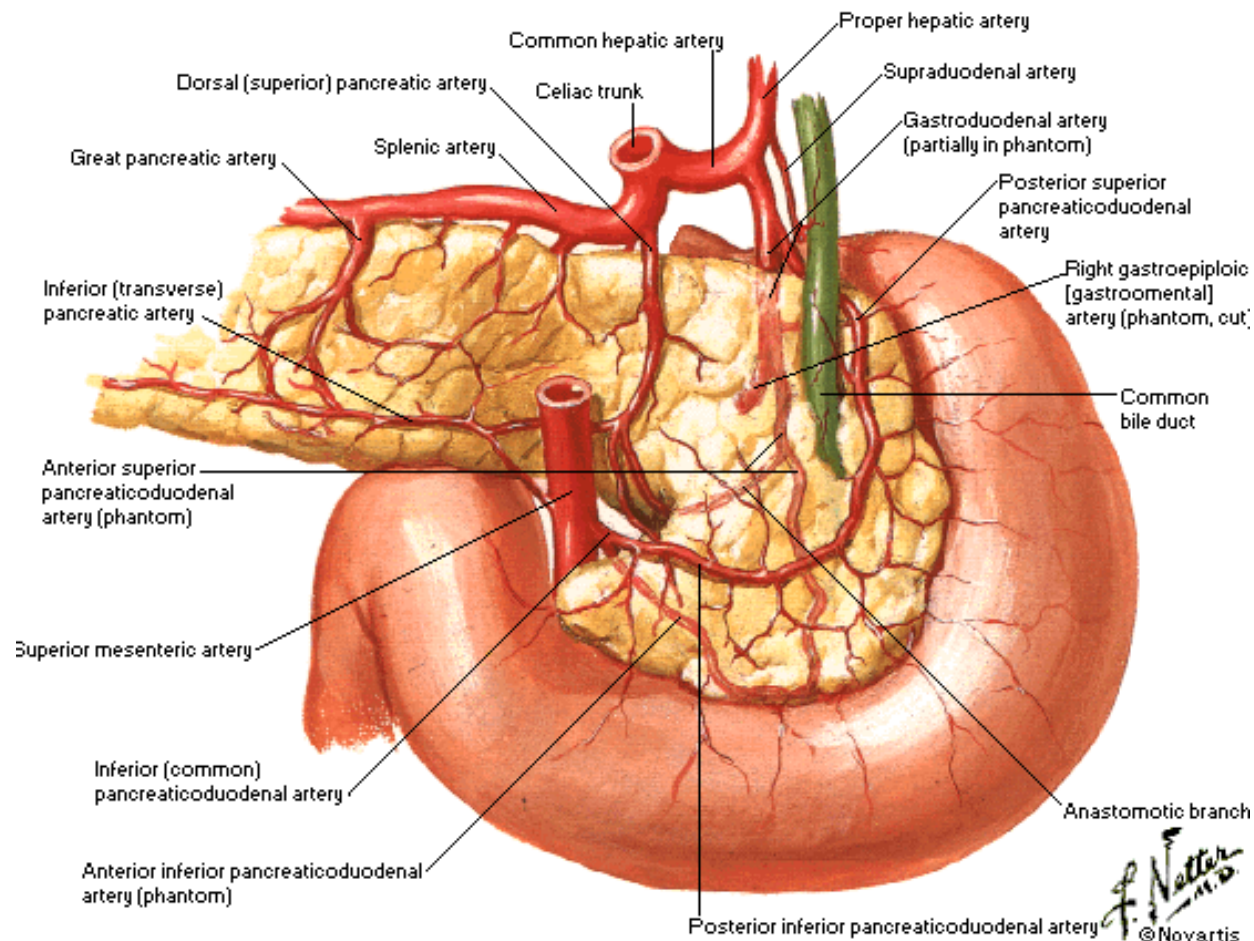




View with stomach reflected cephalad

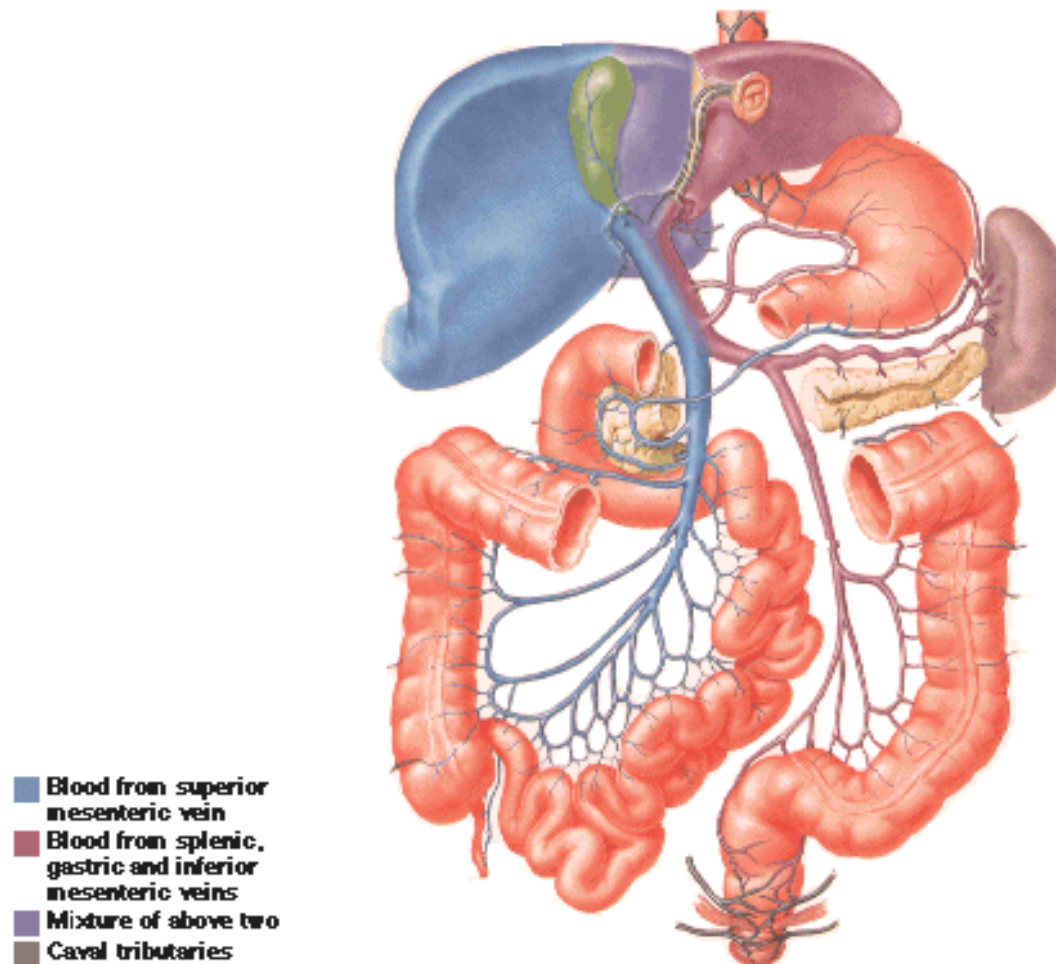
# Arteries of Duodenum and Head of Pancreas

## Posterior View



# Venous drainage

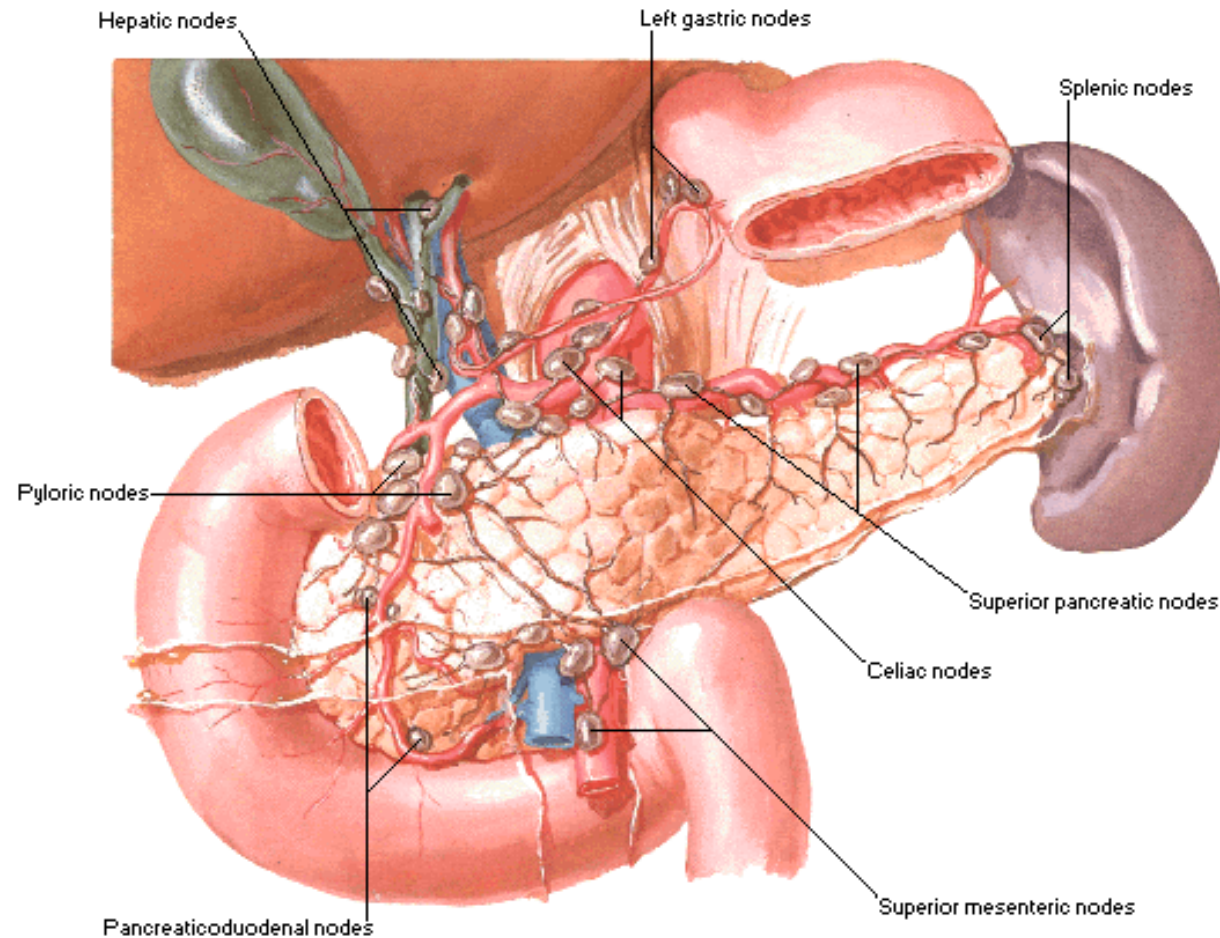
- Splenic
- Superior mesenteric
- Some veins directly in to portal vein



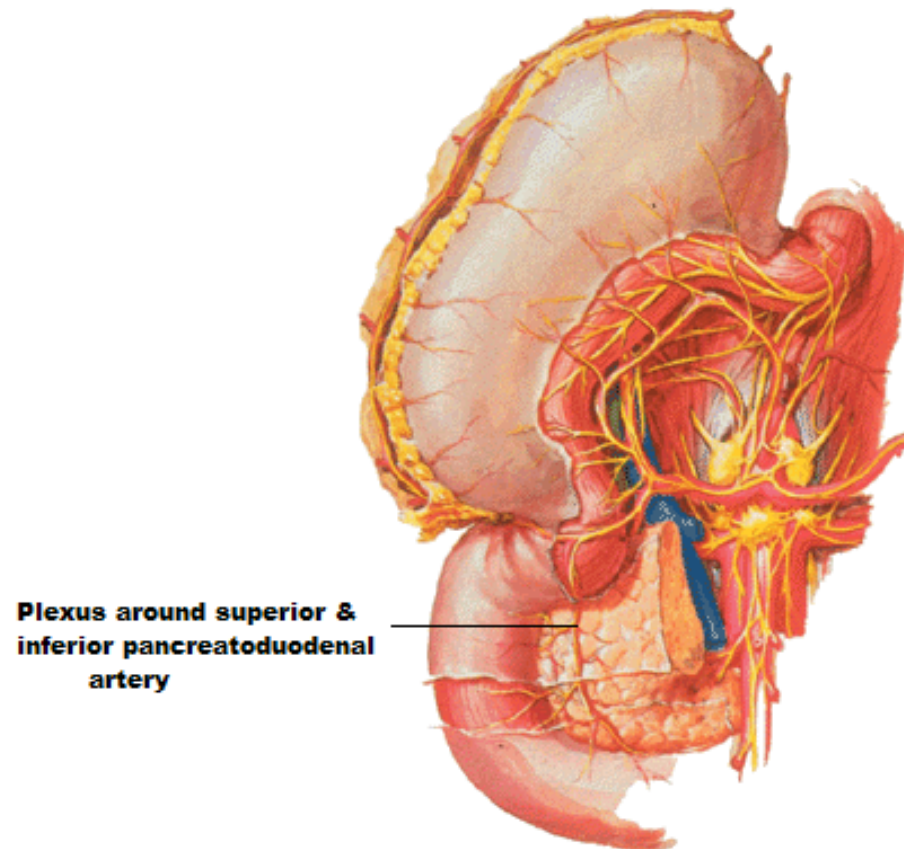


# Lymphatic drainage

- Pancreaticoduodenal nodes → Pyloric → Hepatic → Coeliac
- Lower down: to preaortic lymph node around superior mesenteric artery



- Nerve supply
- Coeliac plexus- Gets sympathetic component from both greater splanchnic nerves & branches from both the vagus nerves



Duodenal cap

