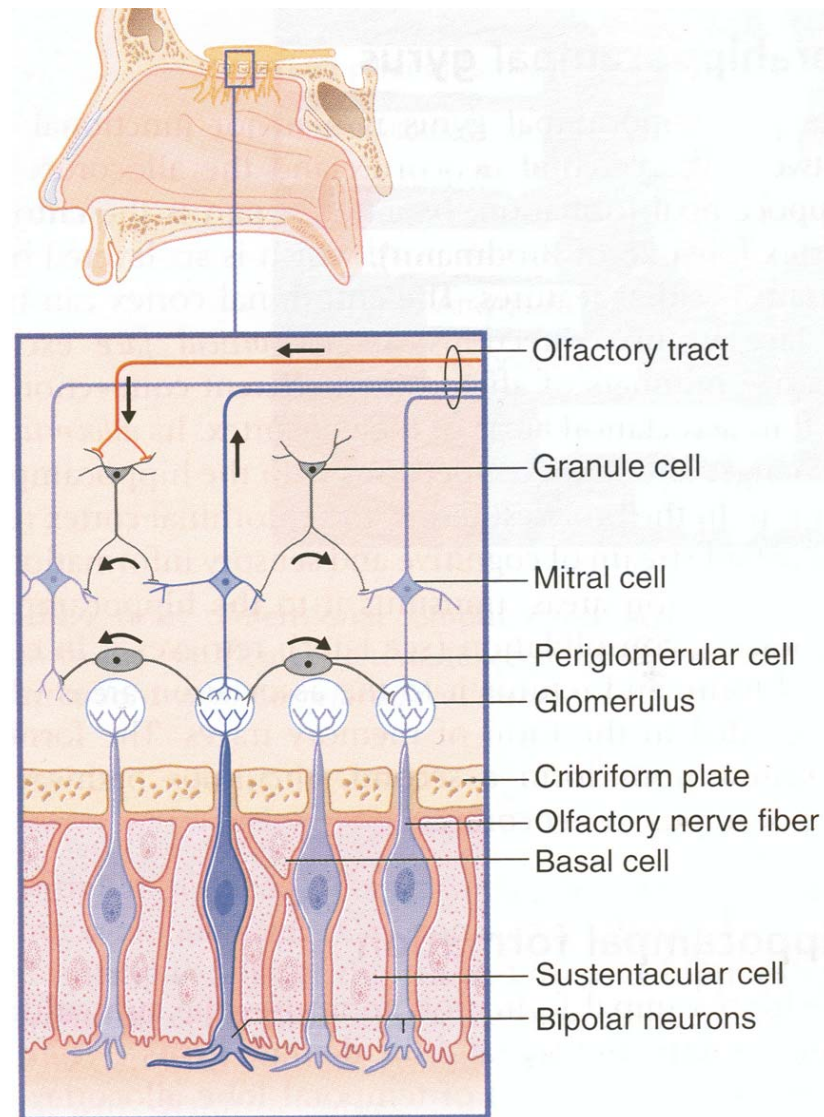


LIMBIC SYSTEM

CONSTITUENTS

- Hippocampus and dentate gyrus
- Uncus (Ento-Rhinal Cortex)
- Cingulate Gyrus
- Indusium Griseum
- Paraterminal Gyrus
- Amygdaloid Body
- Olfactory Nerves, tract and striae
- Fornix
- Stria terminalis
- Anterior Commissure



OLFACTORY SYSTEM

1. Cell bodies are located in surface epithelium.
2. Axons of primary afferents enter cerebral cortex directly.
3. Primary neurons are replaced continuously.
4. Olfactory pathway is ipsilateral.

Functions

- Integration of olfactory, visceral and somatic impulses
- Hunger, food and eating behaviour
- Sexual behaviour
- Emotional behaviour (cingulate gyrus)
- Recent memory (hippocampus)
- Perception of fear (amygdaloid)
- Drug dependence (septal nucleus)

