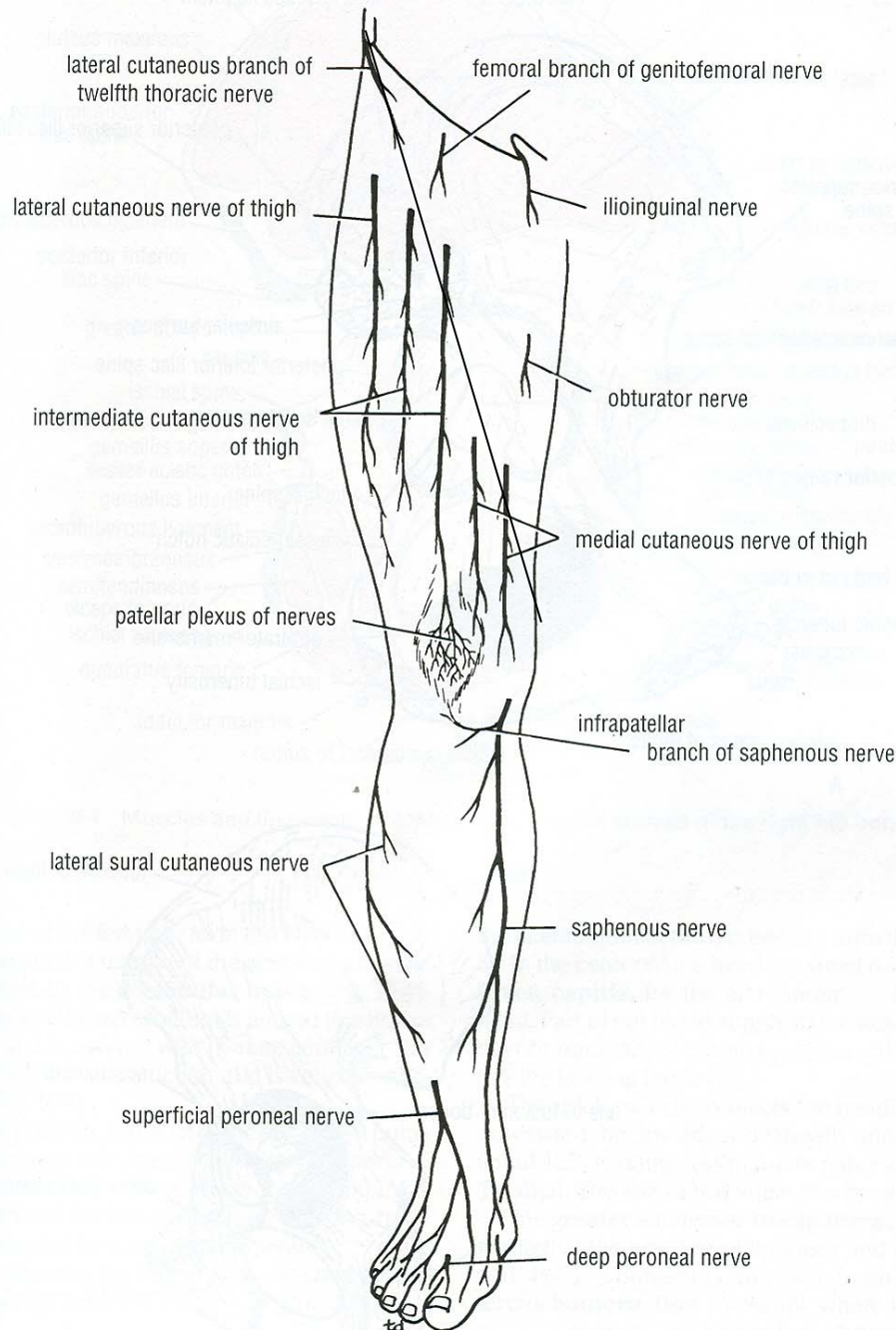


# Front of Thigh

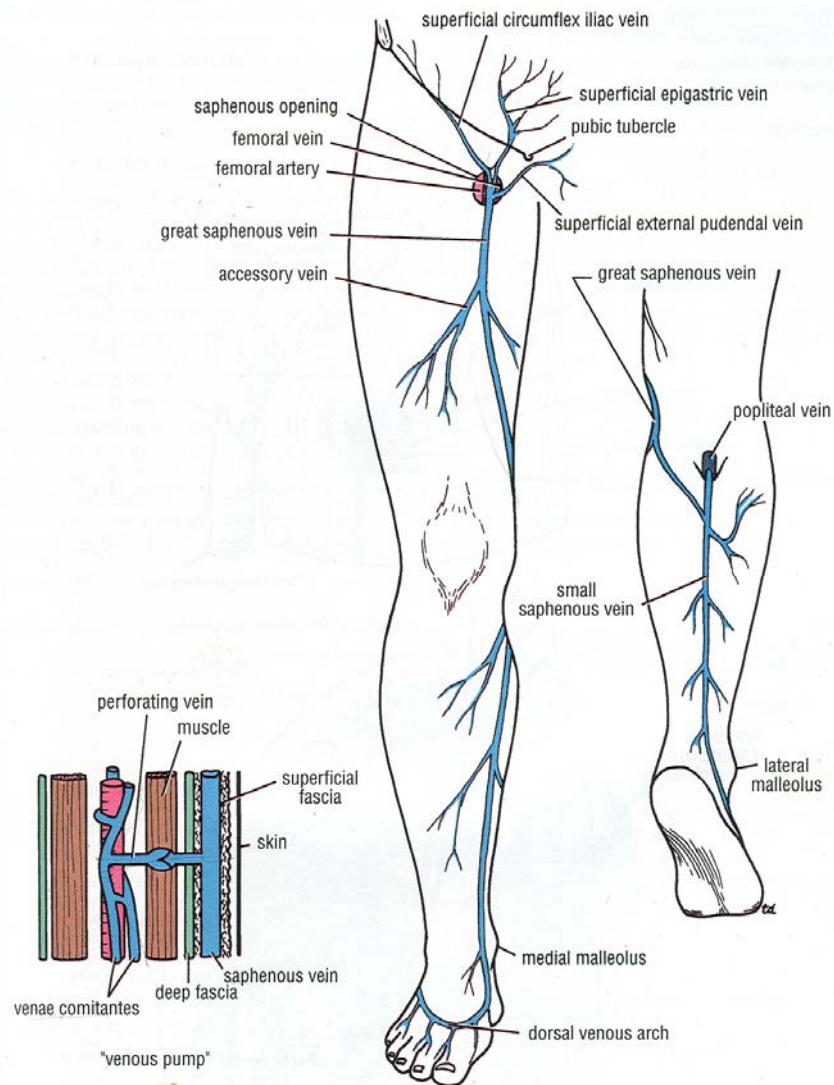
- 7 Cutaneous nerve
- 3 Cutaneous arteries
- Gr. Saphenous vein & tributaries
- Superficial inguinal Lymph nodes & lymphatics
- Pre-patellar & subcutaneous Infra-patellar bursae

# Cutaneous Nerve

- Lat. Cut. Br. of Subcostal N.
- Ilio-Inguinal N (L1)
- Femoral br. of Genito-femoral N(L1,2)
- Lat. Cut. N. of Thigh (L-2,3)
- Intermediate Cut. N. of Thigh(L-2,3)
- Medial Cut. N. of Thigh (L-2,3)
- Cut. Br. of Ant. Division.-  
Obturator N (L-2,3)
- Saphenous N (L-3,4)



**Figure 10-2** Cutaneous nerves of the anterior surface of the right lower limb.

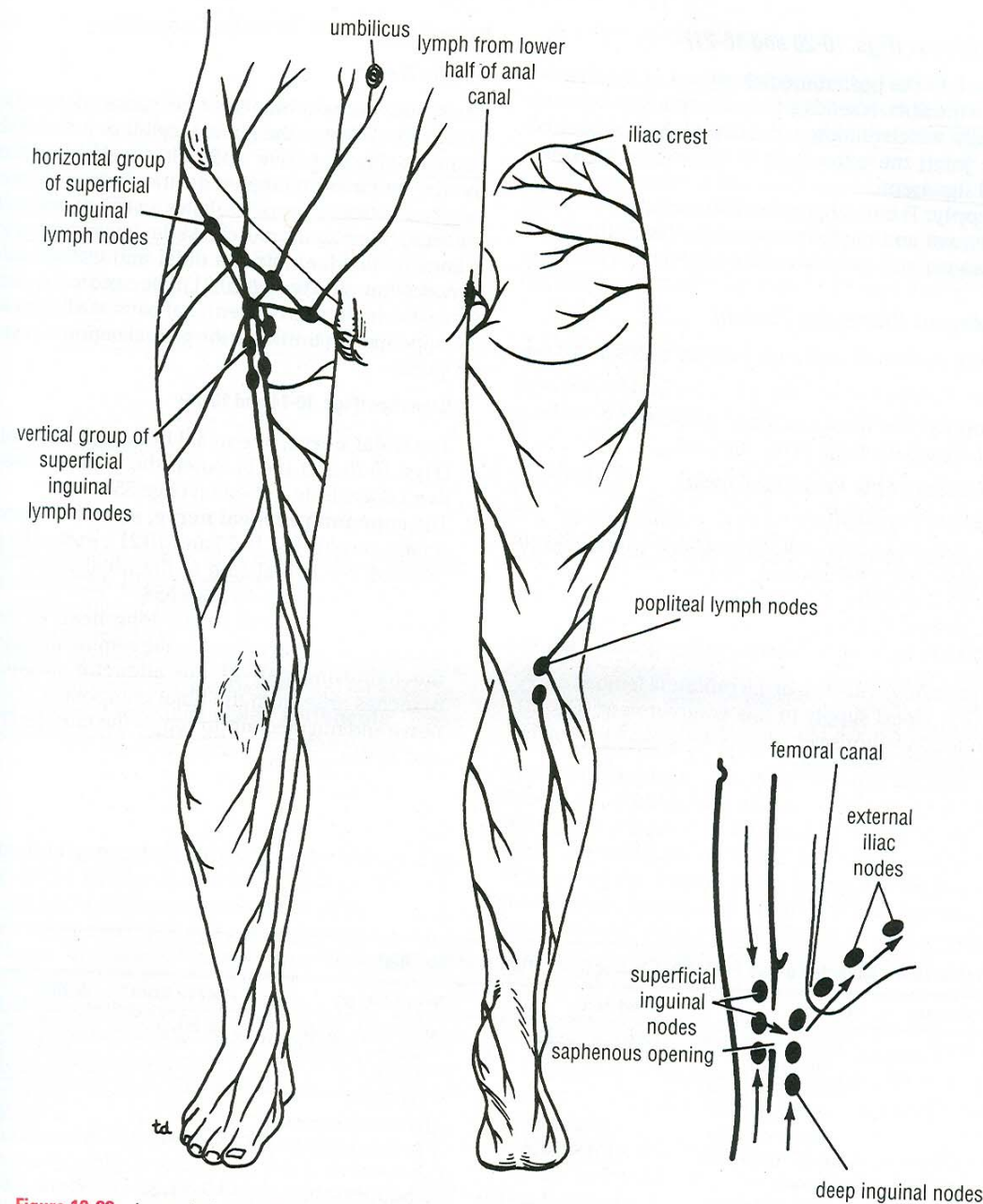


**Figure 10-11** Superficial veins of the right lower limb. Note the importance of the valved perforating veins in the "venous pump."



## Three Tributaries

- Sup. External Pudendal V
- Sup. Circumflex iliac V
- Sup. Epigastric V



**Figure 10-22** Lymph drainage for the superficial tissues of the right lower limb and the abdominal walls below the level of the umbilicus. Note the arrangement of the superficial and deep inguinal lymph nodes and their relationship to the saphenous opening in the deep fascia. Note also that all lymph from these nodes ultimately drains into the external iliac nodes via the femoral canal.

## Superficial Inguinal Lymph Nodes

Upper horizontal Gr.

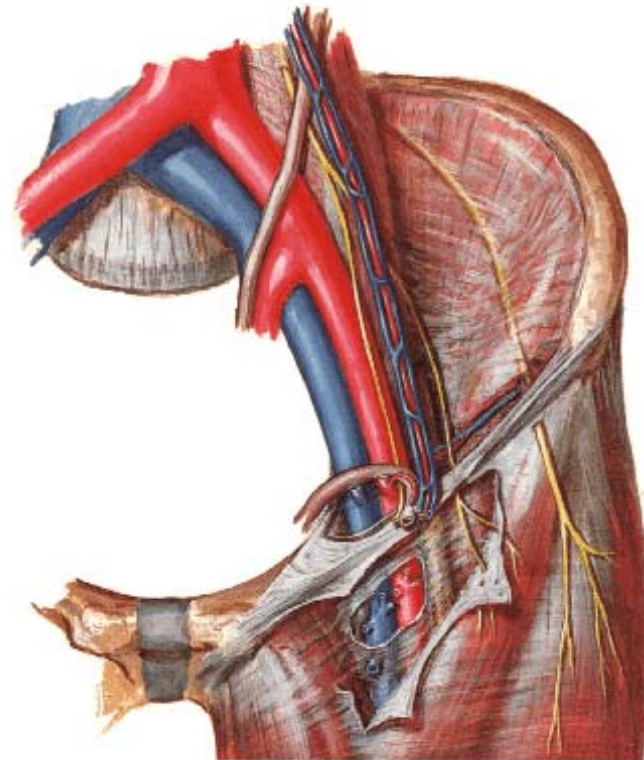
Upper lateral

Upper Medial

Lower Vertical Gr.

# Femoral Sheath

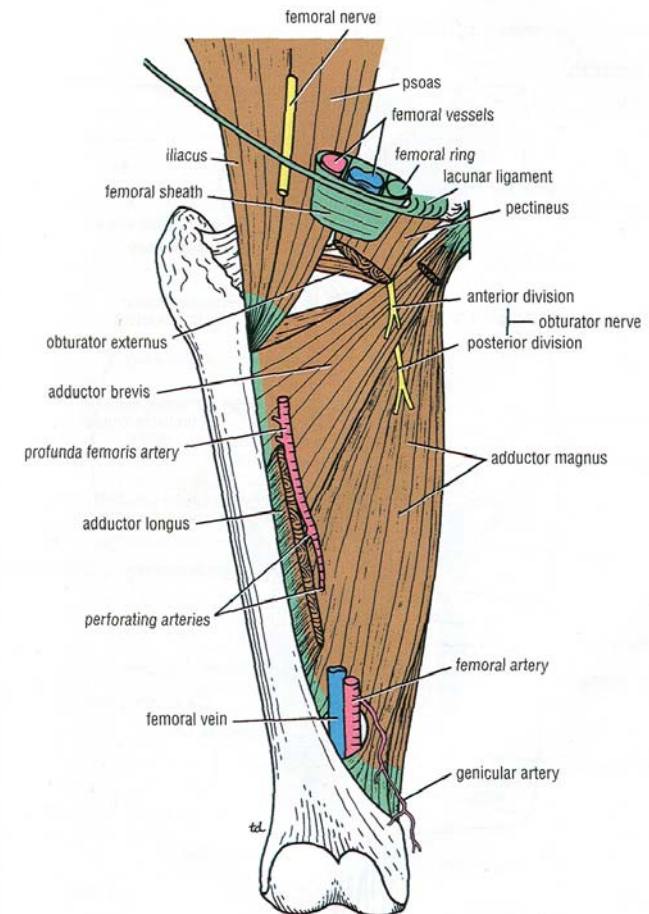
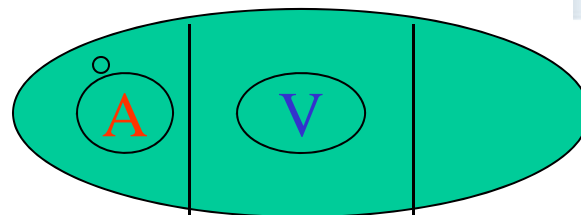
- Funnel shaped extension of fascial lining of abdominal cavity
- surrounding upper 4 cms of femoral artery & vein



# Femoral Sheath

# Walls

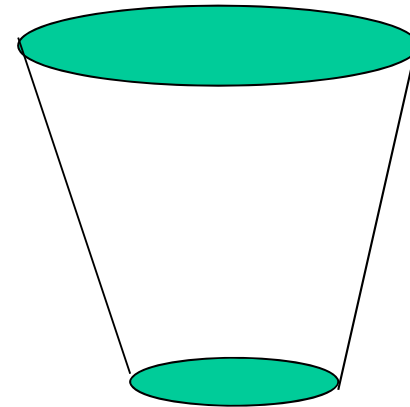
- **Ant.wall** – fascia transversalis
- **Post. Wall** – fascia iliaca
- **Lateral wall** longer & vertical
- Divided in three compartments by two vertical antero-post. septa



**Figure 10-17** Relationship between the obturator nerve and the adductor muscles in the right lower limb.

# Femoral canal & ring

- Medial compartment of femoral sheath
- Conical in shape , wide above, narrow below
- Base or upper end called **Femoral Ring**
- Closed by condensation of extra-peritoneal tissue called femoral septum
- Wider in females due to wider pelvis & small femoral vessels



# Femoral Ring

- Oval shaped
- 1 inch diameter

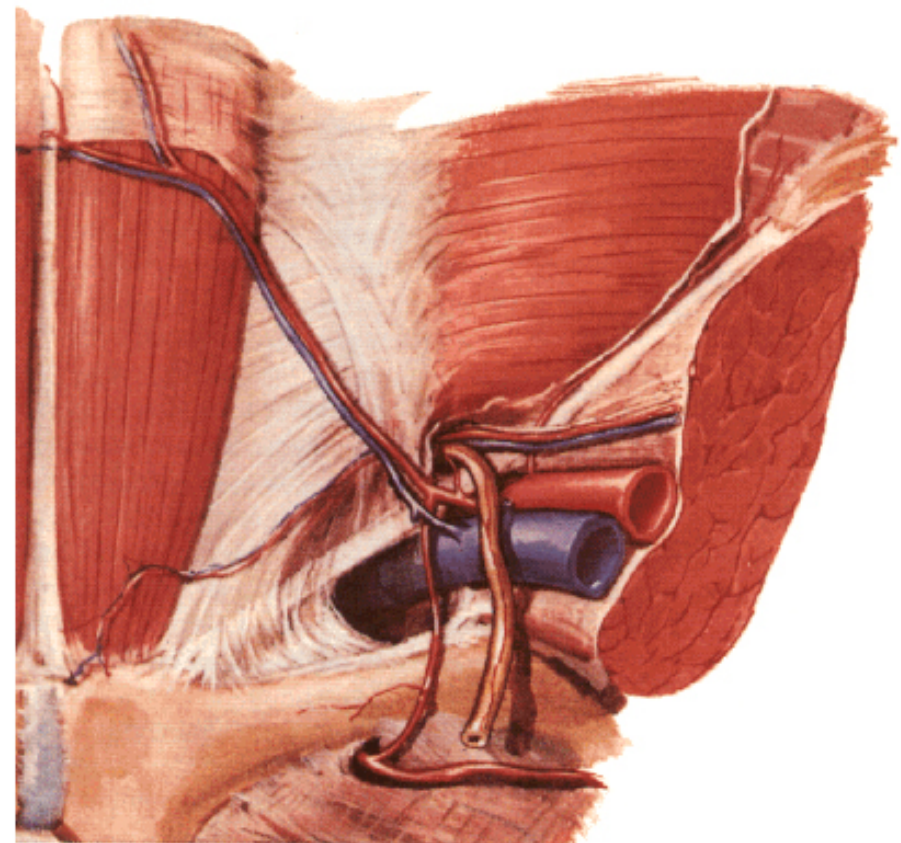
## Boundary

- Ant.- inguinal ligament
- Post.- pectineus & covering fascia
- Laterally- IM septum
- Medially- Lacunar ligament

## Content

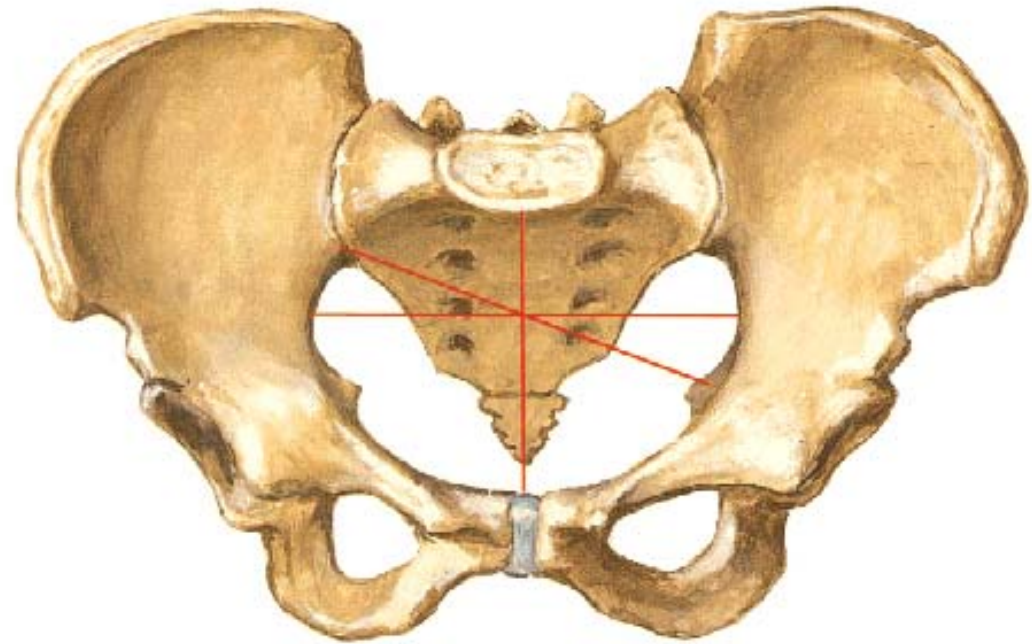
- Lymph node (cloquet or Rossenmuller) with lymphatics & areolar tissue – drain glans penis in males & clitoris in females

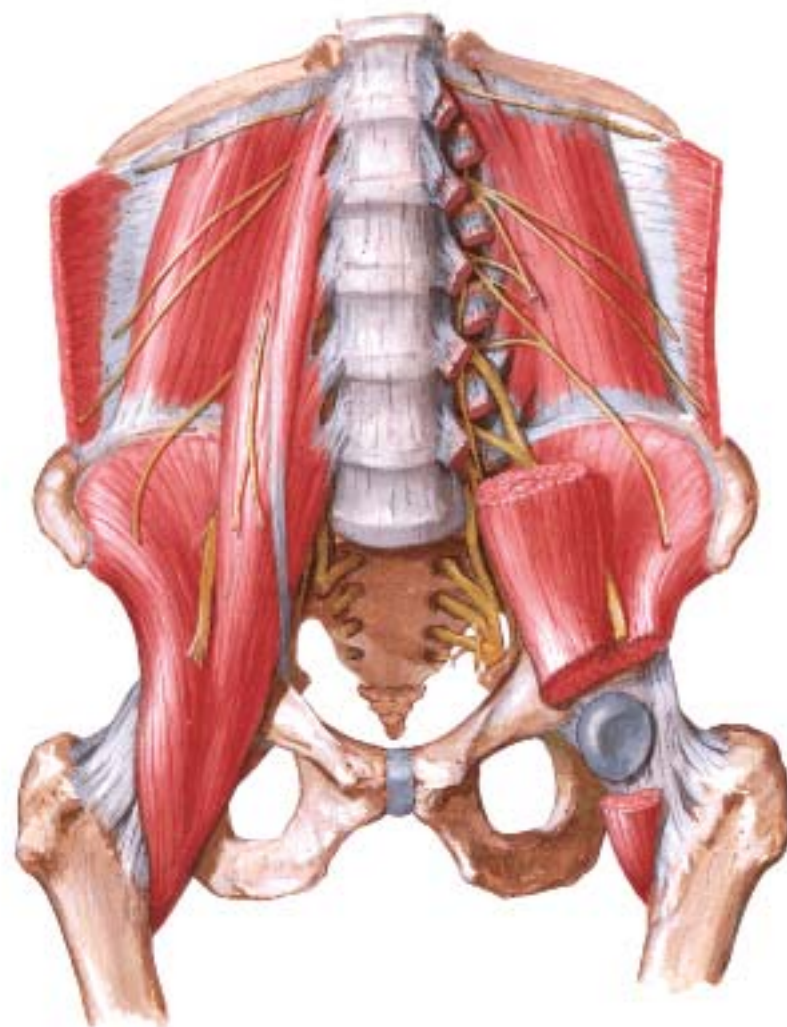
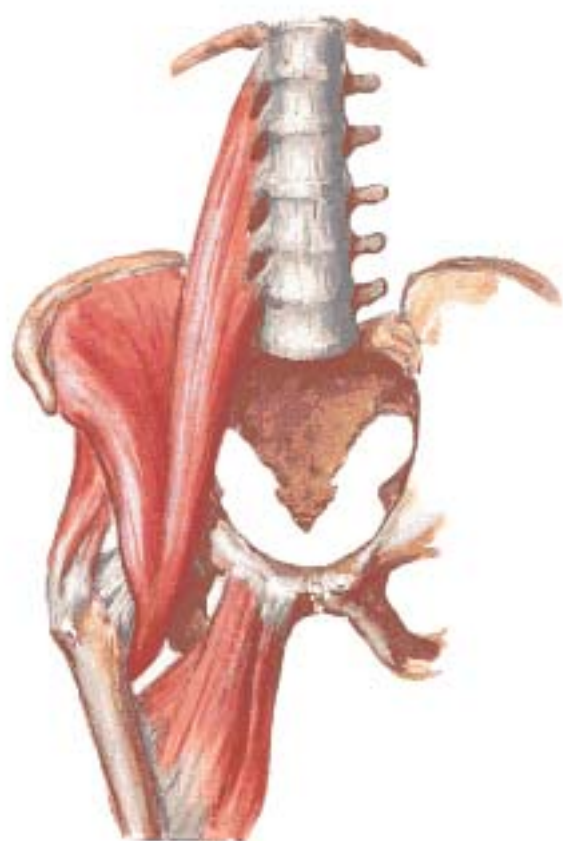
**Inguinal Region**  
Dissection - Posterior [Internal] View

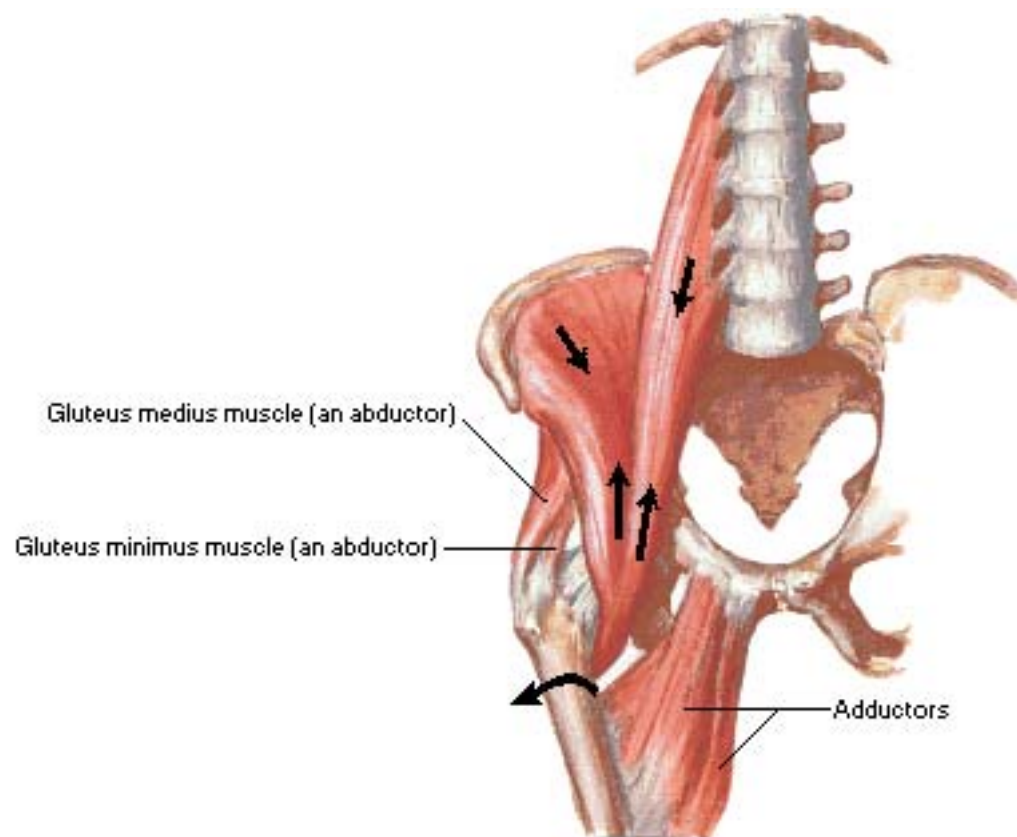


# Bony Attachments of Muscles of Hip and Thigh

## Anterior View







# Muscles of Thigh

## Anterior View - Superficial Dissection

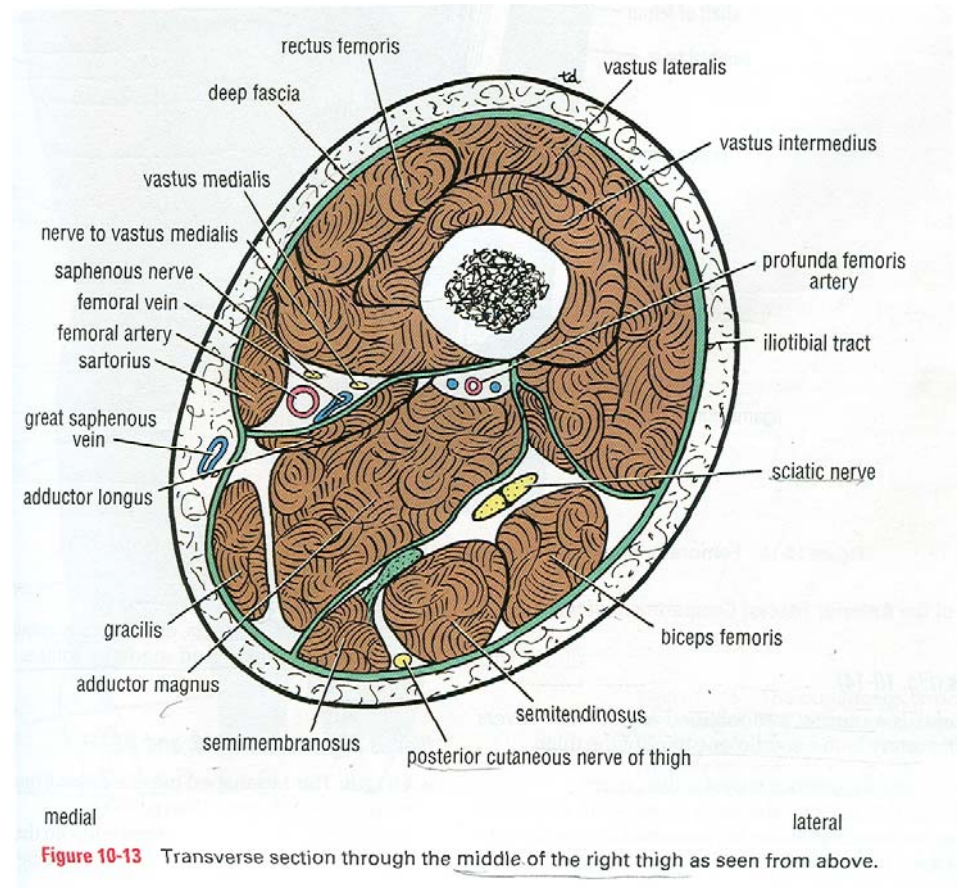
- Sartorius
- Quadriceps Femoris
  - Rectus femoris
  - Three Vasti
    - ❑Vastus medialis
    - ❑Vastus Intermedius
    - ❑Vastus lateralis
- Articularis Genu



# Inter-muscular compartments

## Thigh compartments

- Anterior (extensor) – femoral Nerve
- posterior (flexor , Hamstring) – sciatic (tibial division)
- Medial (adductor) – obturator Nerve



# Femoral Triangle

## Contents

- Femoral artery & Branches - 3 Superficial & 3 Deep
- Femoral Vein & tributaries
- Femoral Sheath
- Nerves

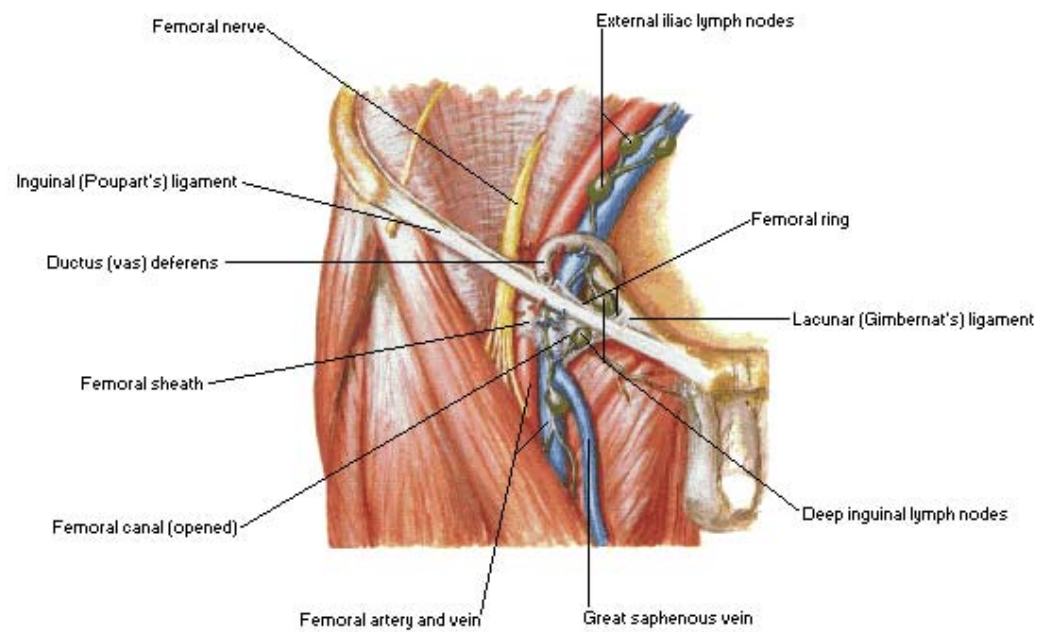
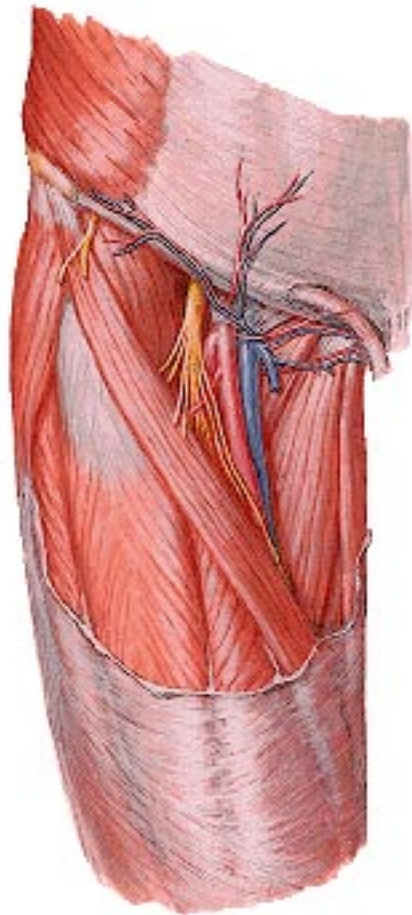
Femoral N

Femoral Br. Of Genitofemoral

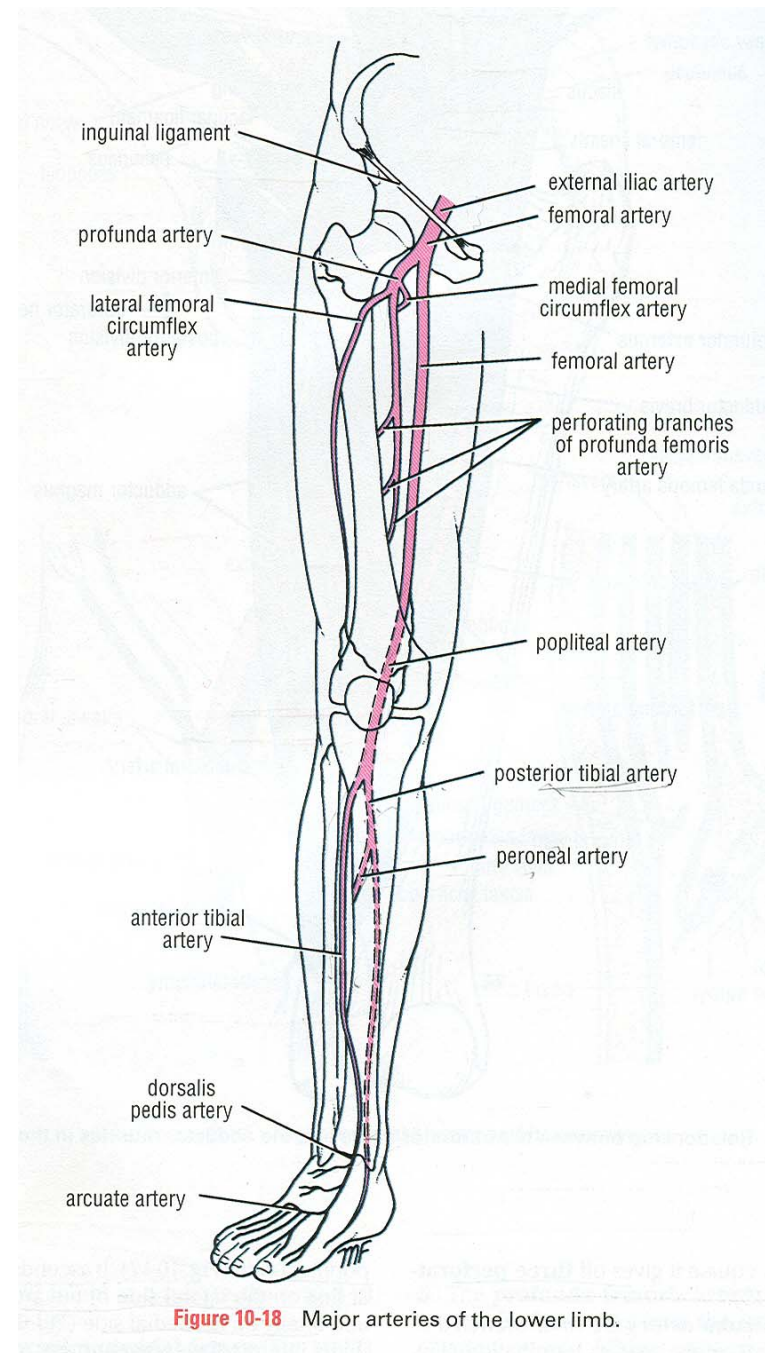
Lat. Cut. N of thigh

- Deep inguinal LN

## Arteries and Nerves of Thigh Superficial Anterior View



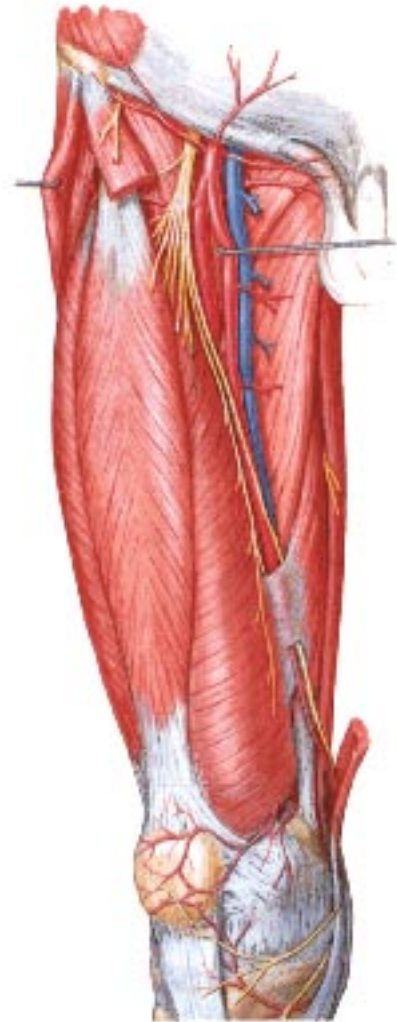
## Arteries of Thigh and Knee Schema



**Figure 10-18** Major arteries of the lower limb.

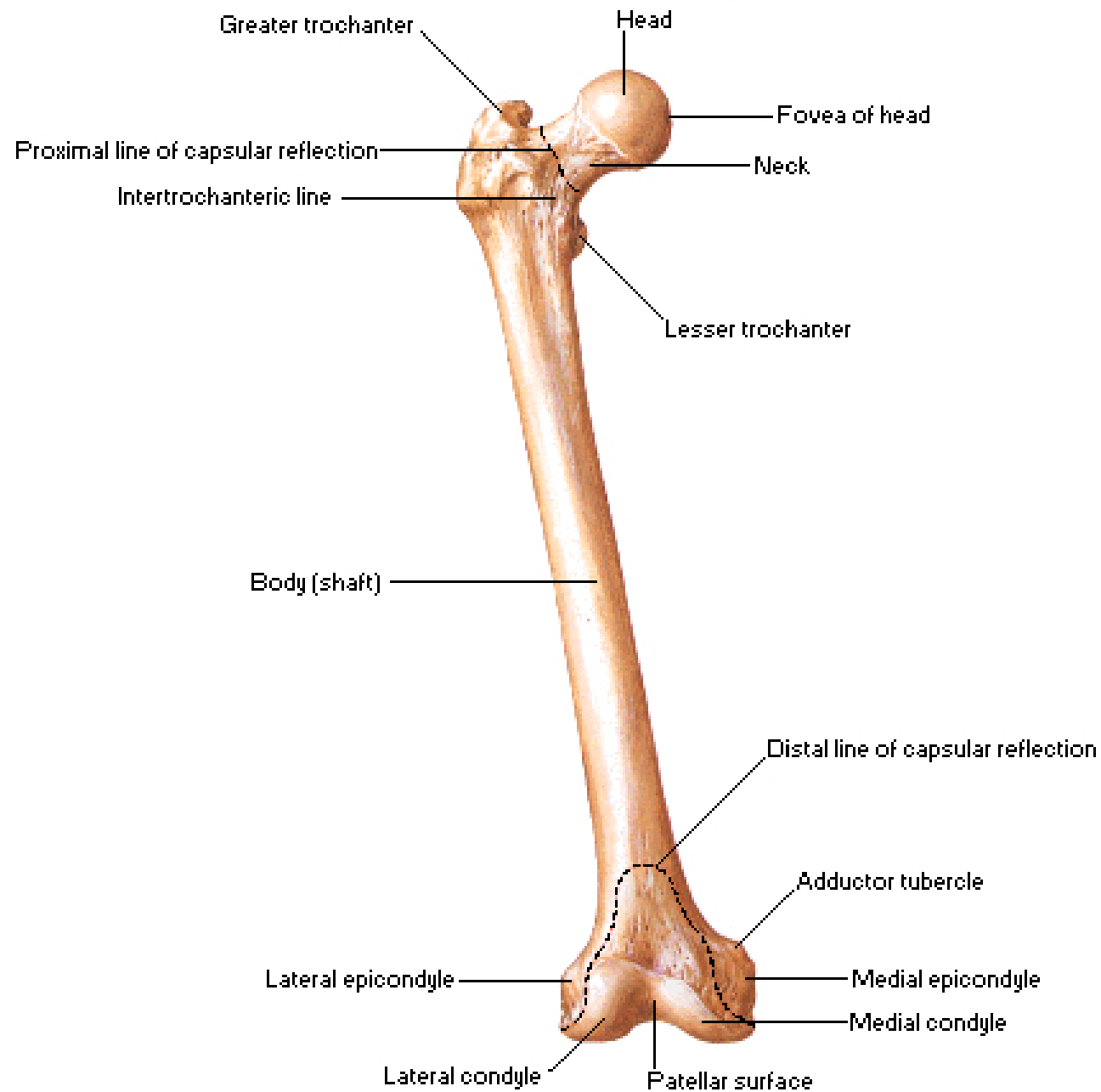
## Arteries and Nerves of Thigh

### Deeper Anterior View



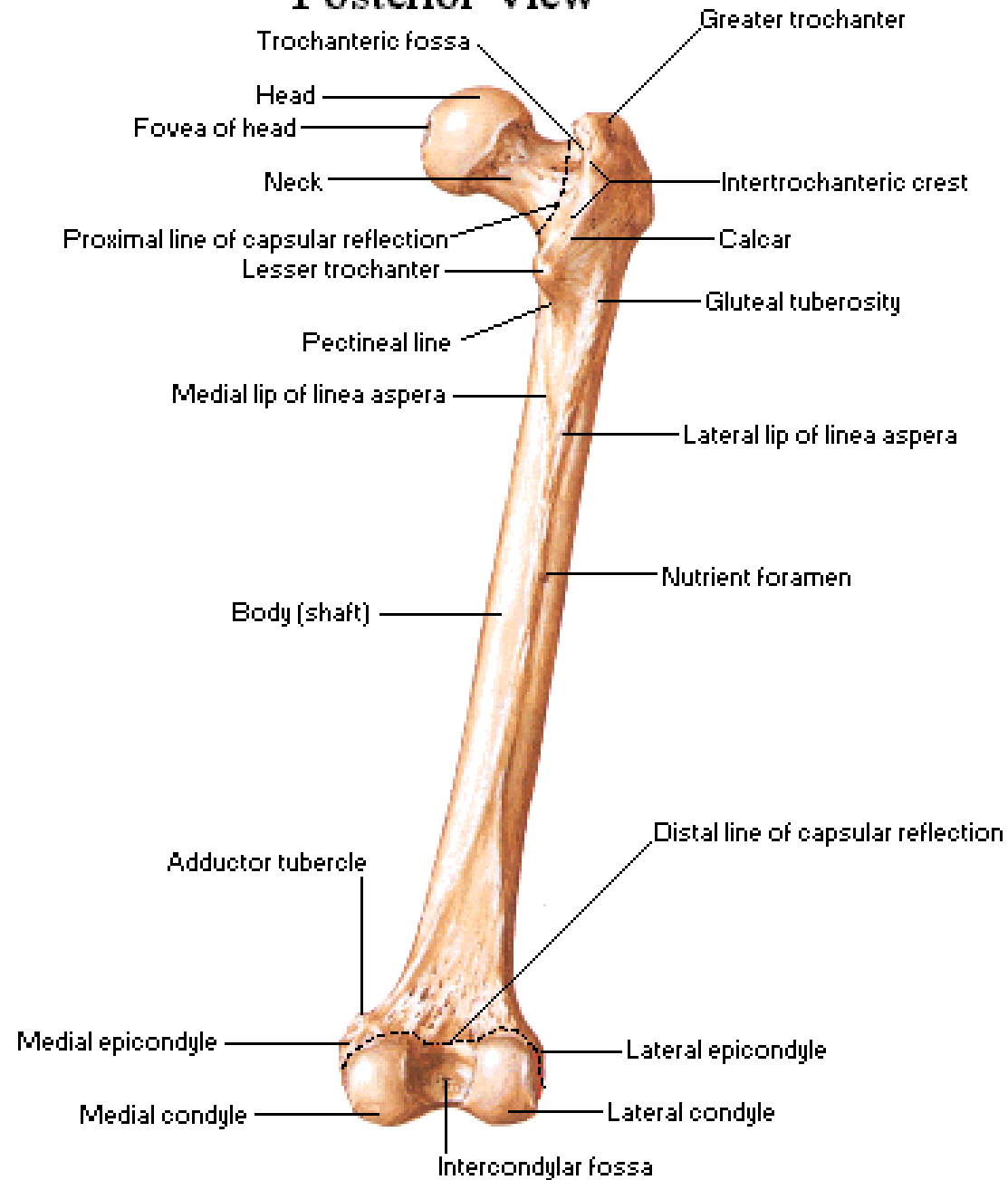
# Femur

## Anterior View

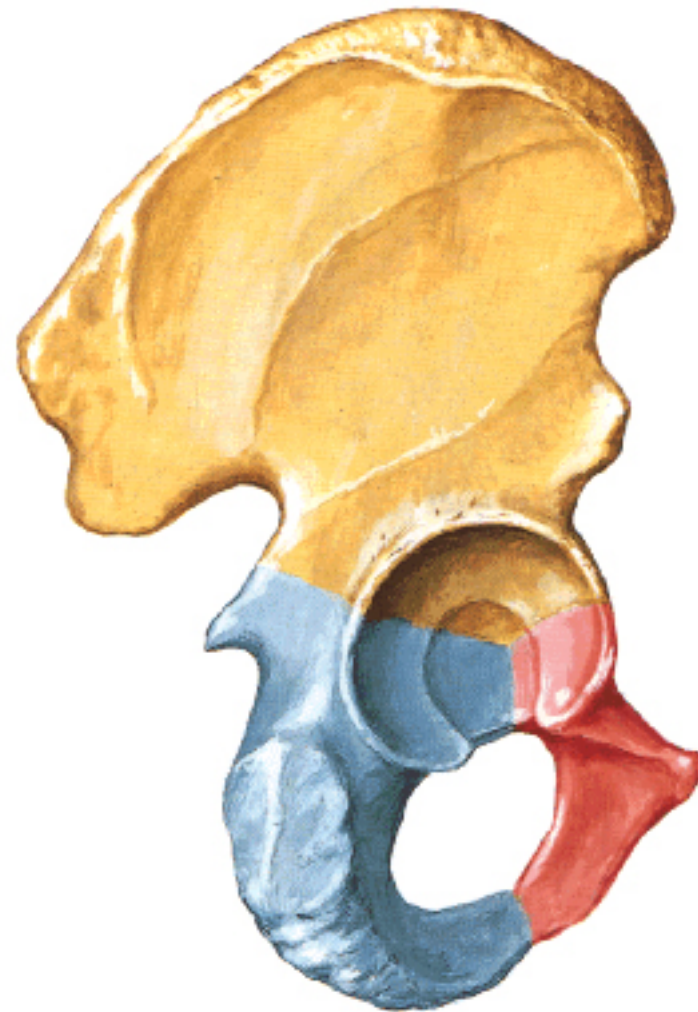
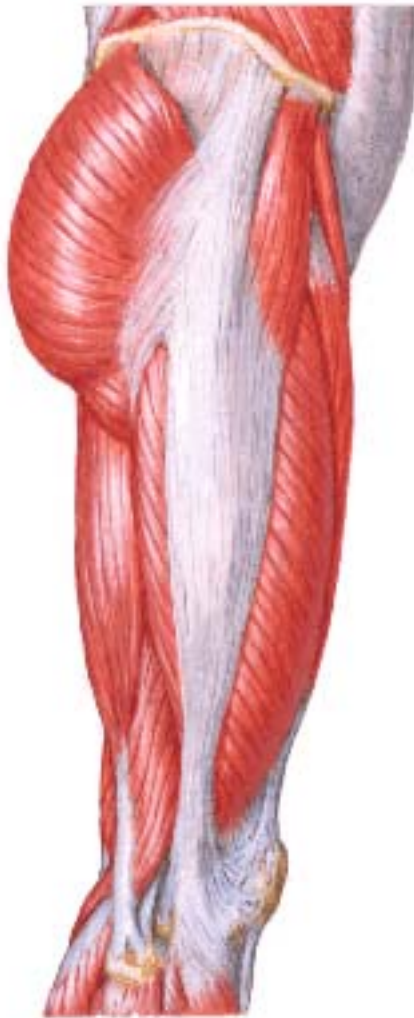


# Femur

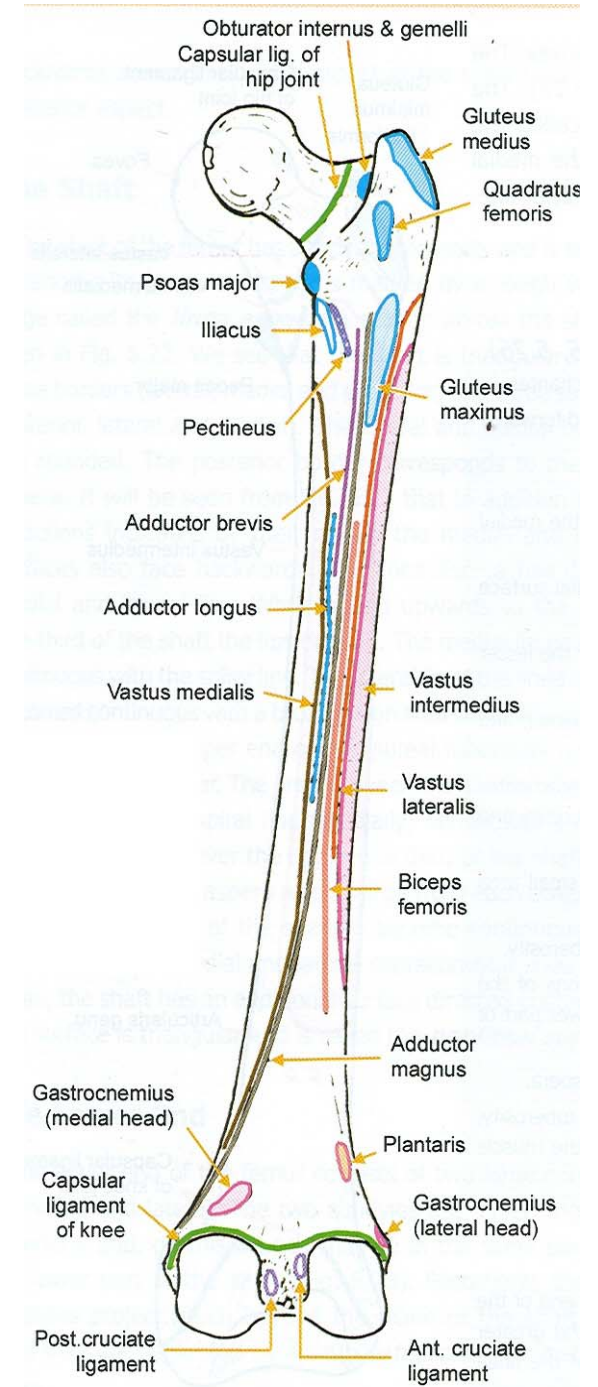
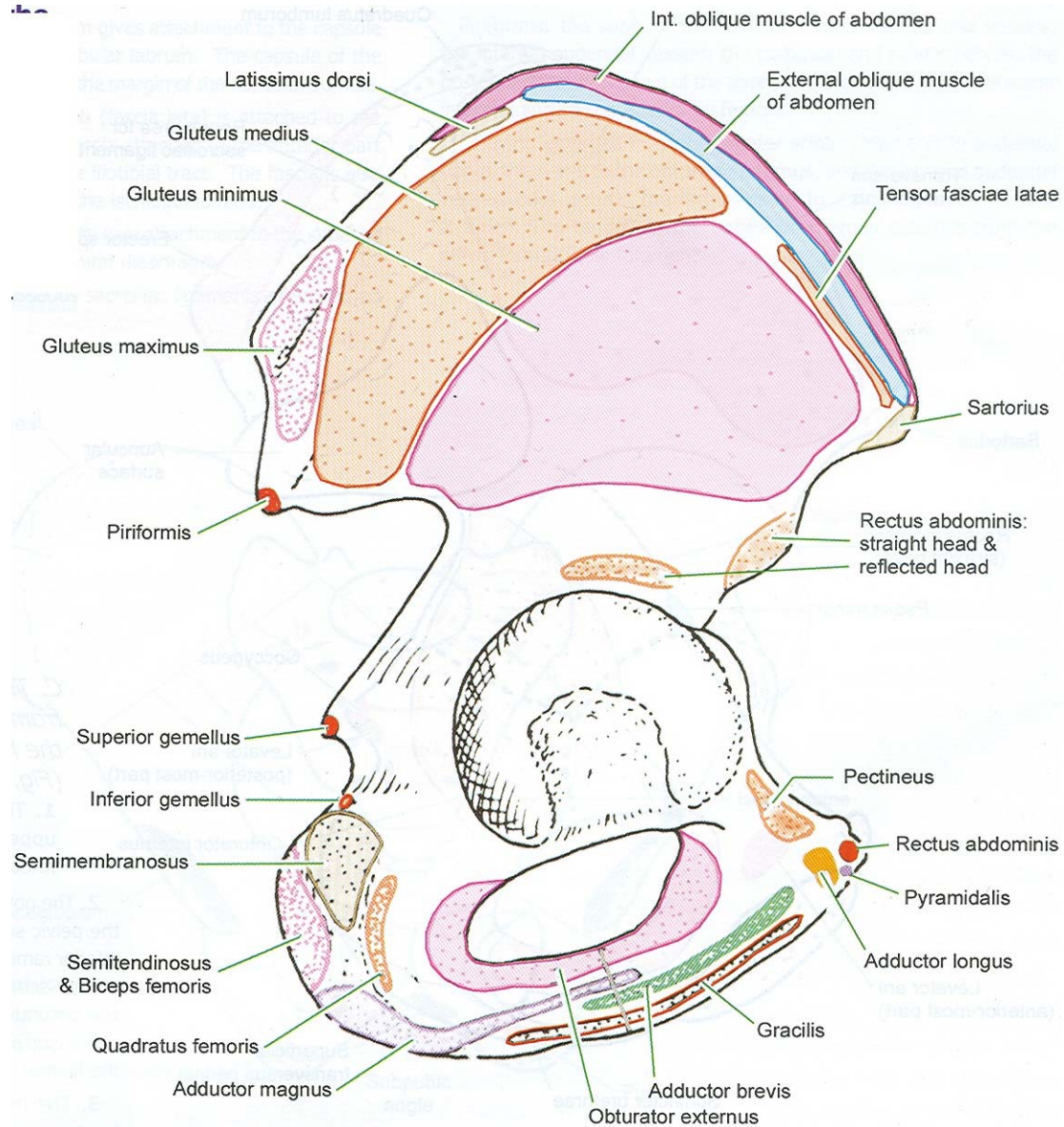
## Posterior View



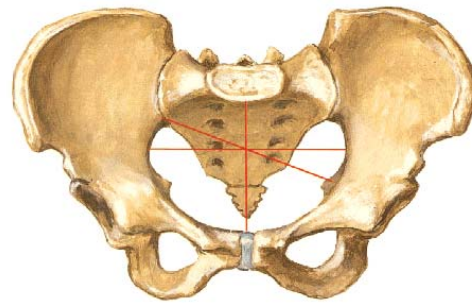
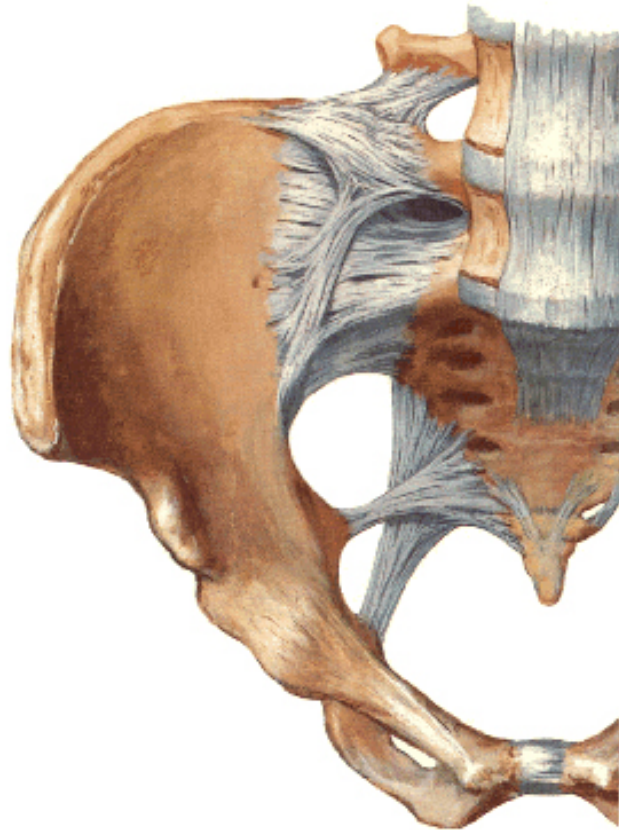
**Coxal Bone**  
**Lateral View**



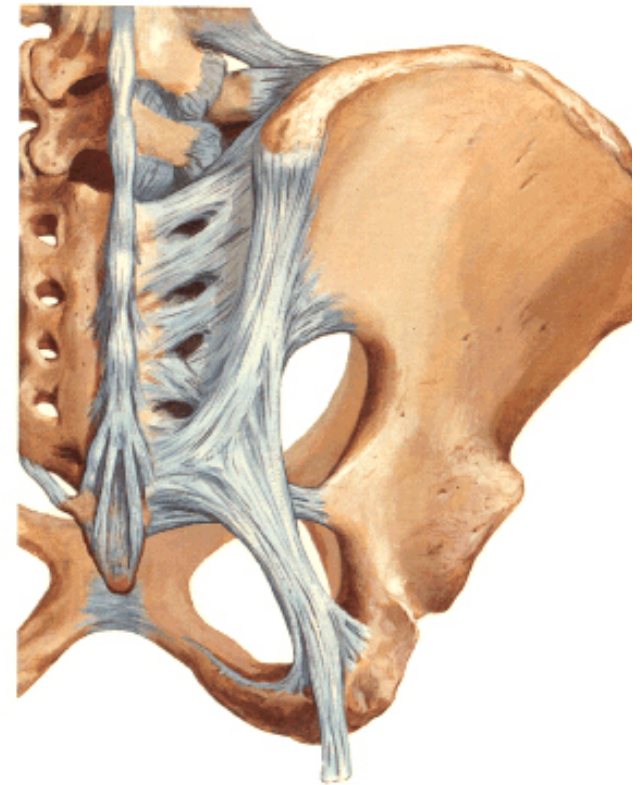
# Origin & insertion of muscles



Anterior View



Posterior View



# Adductor canal

- Also named as Hunter's canal
- Present in middle one third of thigh medially deep to sartorius muscle
- Extends from apex of femoral triangle to adductor hiatus

